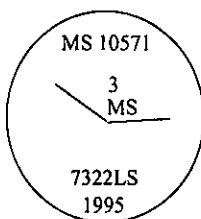


CERTIFIED CORNER RECORDATION

Corner MS 10571- COR 3 Sec. 29 T. 27N R. 30W P.M., MT Lincoln County
MORNING STAR
LODE

- I. 1926 Mineral Survey original record by Charles H. Goodsell: A fir post, 5 ft. long, 7 ins. square, set 2 ft. in the ground, with a mound of earth, scribed M S 3-10571. The SW Loc. Cor. bears S42° 40'E, 501 ft. distant.
- II. No evidence found of orig. wooden post or of the SW Loc. Corner.
- III. At the position determined by survey, set a 2 1/2 in. diam., 30 in. long alum. pipe, 24 ins. in the ground, with a 3 1/4 in. alum. cap mkd. as shown:



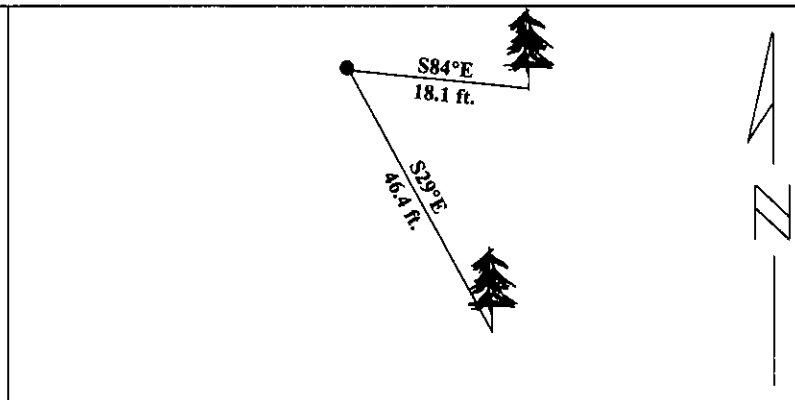
Established two new bearing trees:

A larch, 16 ins. diam., bears S84°E, 18.1 ft. dist., mkd. "3 MS 10571 BT".
A fir, 16 ins. diam., bears S29°E, 46.4 ft. dist., mkd. "3 MS 10571 BT".

Painted red bands around the bearing trees and attached Land Survey Monument and Bearing Tree signs.

Set a 6 ft. galvanized steel guard post with LSM & PB decals, on line, N49°W, 4 ft. from monument.

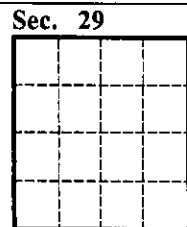
Magnetic Declination: 20° East



SKETCH OF CORNER

CERTIFICATION	
I, <u>Thomas M. Hommel</u>	
certify the information shown herein is true and correct.	
<u>Thomas M. Hommel</u>	
Signature Ground Party Chief	
I, <u>Alvah F. Hughes</u>	
certify that this Corner Record correctly represents work performed by me or under my direction in compliance with the "Corner Recordation Act", (70-22101, et seq., M.C.A.)	
<u>Alvah F. Hughes</u>	
Signature of Surveyor & Seal	
Date:	<u>1/12/96</u>
Reg. No.:	<u>7322LS</u>
Employer:	<u>U.S. FOREST SERVICE</u>

Office of Clerk and Recorder, County of LINCOLN. This "corner record" was filed for record on FEB 20, 1997 was noted on the cross-index plat and is assigned page No. 9237 in book No. CORAL M. CUMMINGS By dlb
County Official



• - corner this sheet

Cross Index No.

T. 27N R. 30W PMM