

INSTRUCTIONS

1. Original and/or subsequent record used to evaluate the corner position.
2. Description of evidence found, note discrepancies in the record, state method of establishing lost or obliterated corners.
3. Description of monument and accessories set to perpetuate the corner position.
4. Sketch of corner, show all pertinent data which can best be shown in a sketch example, corner marking, topography ties, position of accessories, etc.
5. Certification must be signed and sealed by Land Surveyor registered in the State of Montana.
6. Fill in Cross Index & Section Diagram at bottom of sheet.

CERTIFIED CORNER RECORDATION

Corner SE Sec. Cor. of Sec. 22 T. 27 N. R. 30 W. P.M.M. Lincoln County

- I. 1900 G.L.O. original record by Burton S. Adams: Set a limestone, 20 X 14 X 4 ins., 15 ins. in the ground, with 2 notches on S. and E. edges, from which:

A pine, 8 ins. diam., bears N84°30'E, 52 lks. dist., mkd. T27N R30W S23 BT.

A pine, 8 ins. diam., bears S36°15'E, 50 lks. dist., mkd. T27N R30W S26 BT.

A pine, 8 ins. diam., bears S36°W, 19 lks. dist., mkd. T27N R30W S27 BT.

A tamarack, 28 ins. diam., bears N52°30'W, 14 lks. dist., mkd. T27N R30W S22 BT.

1981 U.S.F.S. Certified Corner Recordation by Thomas C. Hill: "Found a firmly set 14 X 4 ins. limestone, 5 ins. above the ground with 2 notches on S. and E. edges, from which a burnt snag stands at record bearing and distance for S22 BT., no visible scribing

From original evidence at the corner point, set 2 1/2 ins. diam. X 30 ins. long, alum. pipe, 20 ins. in the ground, marked as shown, from which:

T27N R30W

S22 S23

S27 S26

1981

5612 S

Established four new bearing trees..

A 4 ins. larch, bears S49°W, 14.3 ft., mkd. S27 BT.

A 6 ins. larch, bears S17°E, 4.9 ft., mkd. S26 BT.

A 5 ins. larch, bears N70°E, 16.5 ft., mkd. S23 BT.

A 4 ins. larch, bears N15°E, 8.7 ft. mkd. S22 BT.

Bury the original stone alongside alongside the iron post.

- II. Found a 1981 U.S.F.S alum. cap, firmly set, 6 ins. above ground, mkd. as shown above, from which:

A larch, 5 ins. diam., bears N9°E, 8.5 ft. dist., (B.L.M.- record N15°E, 8.7 ft. dist) visible scribe. Note: scribed S22 BT per cor. rec.

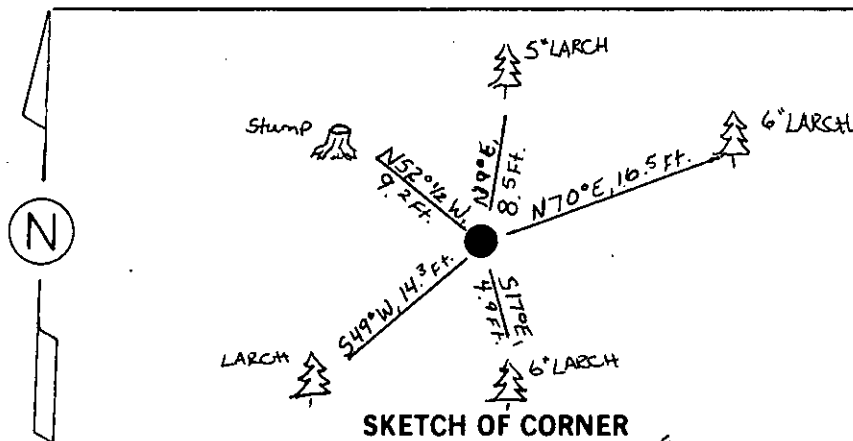
A larch 6 ins. diam., bears N70°E, 16.5 ft. dist., healed face. (B.L.M.- record)

A larch, 6 ins. diam., bears S17°E, 4.9 ft. dist., visible marks. (B.L.M.- record)

A larch, bears S49°W, 14.3 ft. dist., healed face (B.L.M.- record)

A stump, bears N52 1/2°W, 9.2 ft. dist., visible scribing. (G.L.O.- record)

- III. Painted a red band around bearing trees and attached Land Survey Monument and Bearing Tree signs.
Magnetic Declination: 20° East.



SKETCH OF CORNER

CERTIFICATION

Kenneth R. Kern

I, Kenneth R. Kern, certify the information shown herein is true and correct.

Signature Ground Party Chief

Alvah F. Hughes

I, Alvah F. Hughes, certify that this Corner Record correctly represents work performed by me or under my direction in compliance with the "Corner Recordation Act" (70-22-101, et seq., M.C.A.).

Signature of Surveyor & Seal

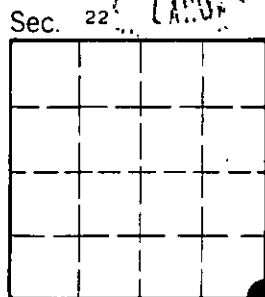
Date: 12/14/94 Reg. No. 7322LS

Employer: U.S. FOREST SERVICE

Office of Clerk and Recorder, County of Lincoln. This "corner record" was filed for record on April 27, 1995 was noted on the cross-index plat and is assigned page No. 7059, in book No. Coral M. Cummings, RB

County Official

Cross Index No. R-17 T. 27N R. 30W P.M.M.



• - corner this sheet

INSTRUCTIONS TO SURVEYORS FOR COMPLETION OF CERTIFIED CORNER RECORDATION FORMS

I. ORIGINAL AND/OR SUBSEQUENT RECORD:

This item should describe or quote those portions of the original or subsequent record which were used in evaluating the corner position. The original record will usually be the General Land Office field notes. Subsequent record can come from several sources: Previously filed corner records, maps and plats, private and public records, etc. Some of the subsequent record, even though not in the public record, but known to have validity by the surveyor, may be quoted and appropriately noted.

The record data helps support the reestablished corner position because it clearly shows what history the surveyor based his corner position on. In some cases, however, the record may be unknown or not pertinent. A statement to that effect should appear on the corner record.

II. DESCRIPTION OF EVIDENCE FOUND OR METHOD OF LOCATING CORNER POSITION:

This item will describe the original or subsequent record evidence found. If portions of the found evidence cannot be reconciled with the record, then the disregarded record should be noted, and, if possible, an opinion as to its cause narrated.

If no physical evidence of the original or subsequent monuments and accessories can be found, then the method used to reestablish the lost or obliterated corner (single proportion, fence intersection, parol evidence, terrain calls, centerline of road, etc.) shall be indicated.

III. DESCRIPTION OF MONUMENTS AND ACCESSORIES SET TO PERPETUATE THE CORNER POSITION:

This item should list all details about the corner and its location which will help exclusively identify the corner position; including size and type of monument, how marked if not shown in sketch, and distinguishing topographic calls which help locate the corner. In many cases, instructions on how to find the corner should be included.

References or ties to other corners are optional and may be drawn on the face or back of the corner record form, or references to Certificate of Survey may be made. Separate drawings may be attached to the corner form.

If state plane coordinate values for the corner position are shown, then the control upon which they are based should be indicated.

IV. SKETCH OF CORNER:

This item will usually show how a found or set corner is marked and may also show topography or accessory monuments found or set and their relation to the corner. There is no stipulated format; the sketch could be transcribed field note entries.

V. CERTIFICATION:

The name and signature of the ground party chief is optional.

The Surveyor who performed or directed the field work which is depicted on the "Certified Corner Record" shall sign and affix his seal in the Certification.

The employer blank is optional but useful in tracking down original field note data or adjacent record if, in the future, questions arise about the corner.

VI.

The Cross Index at the bottom of the page should be completed by the Surveyor. Only the single Township Index where the corner is filed shall be completed.

The lower righthand corner is a corner location diagram and should have the pertinent section filled in at the top and a closed circle indicating the appropriate corner position in the section filled in. This is intended to be an aid in searching the "Record" once it has been filed.