

**INSTRUCTIONS**

1. Original and/or subsequent record used to evaluate the corner position.
2. Description of evidence found, note discrepancies in the record, state method of establishing lost or obliterated corners.
3. Description of monument and accessories set to perpetuate the corner position.
4. Sketch of corner, show all pertinent data which can best be shown in a sketch example, corner marking, topography ties, position of accessories, etc.
5. Certification must be signed and sealed by Land Surveyor registered in the State of Montana.
6. Fill in Cross Index & Section Diagram at bottom of sheet.

**CERTIFIED CORNER RECORDATION**

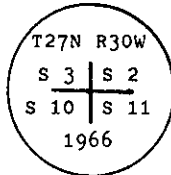
Corner SW sec. cor. Sec. 2 T. 27 N. R. 30 W. P.M.M. Lincoln County

I. 1900 original G.L.O. record by Burton S. Adams: Set a sandstone, 10 x 10 x 4 ins. 15 ins. in the ground, and four bearing trees.

1966 B.L.M. Remonumentation by R. G. Leedy: The cor. of secs. 2, 3, 10 and 11, monumented with a limestone, 20 x 12 x 6 ins., firmly set, mkd. with 5 notches on the S. and 2 on the E. edges, and witnessed by the original bearing trees:

At the corner point

Set an iron post, 30 ins. long, 2 1/2 ins. diam., 24 ins. in the ground, with brass cap mkd.



from which

The original bearing trees:

- A hemlock, 14 ins. diam., bears S 65 1/2° E, 35 lks. dist., marked with an overgrown blaze. (Record: S 63 3/4° E, 35 lks.)
- A hemlock, 14 ins. diam., bears S 34° W, 45 lks. dist., marked with an overgrown blaze. (Record)
- A hemlock, 14 ins. diam., bears N 65 3/4° W, 25 lks. dist., marked with an overgrown blaze. (Record)

The new bearing tree:

- A spruce, 12 ins. diam., bears N 14° E, 27 lks. dist., marked T27N R30W S 2 BT.

Bury the original stone alongside of the iron post.

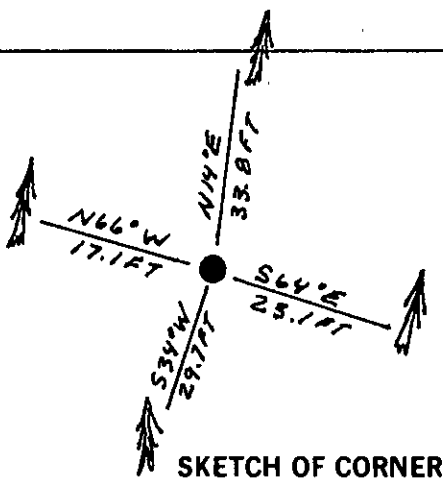
II. Found a 2 1/2 in. diam. iron pipe, 4 ins. above ground, firmly set, with a 3 1/4 in diam. BLM brass cap mkd., as shown above, from which:

- A hemlock, 16 ins. diam., bears S 64° E, 23.1 ft. (35 lks.) dist., healed face.
- A hemlock, 19 ins. diam., bears S 34° W, 29.7 ft. (45 lks.) dist., healed face.
- A hemlock, 16 ins. diam., bears N 66° W, 17.1 ft. (26 lks.) dist., healed face.
- A spruce, 14 ins. diam., bears N 14° E, 33.8 ft. (51 lks.) dist., marked T27N R30W S 2 BT. (Rec. 27.0 lks.)

III. Painted a red band around the bearing trees and attached Land Survey Monument and Bearing Tree signs.

No guard post established.

Magnetic Declination: 20° East.



**SKETCH OF CORNER**

**CERTIFICATION**

I, Thomas M. Hommel  
 certify the information shown herein is true and correct.  
 Signature of Ground Party Chief

I, Alvah P. Hughes  
 certify that this Corner Record correctly represents work performed by me or under my direction in compliance with the "Corner Recordation Act" (70-22-101, et seq., M.C.A.)  
 Signature of Surveyor

Date: 12/20/93 Reg. No. 7322LS  
 Employer: U.S. FOREST SERVICE

Office of Clerk and Recorder, County of Lincoln. This "corner record" was filed for record on Jan 12, 1994 was noted on the cross-index plat and is assigned page No. 6087, in book No. \_\_\_\_\_

Coral M. Cummins  
 County Official

Sec. 2


E-17 T. 27 N. R. 30 W. PMM

• - corner this sheet