

INSTRUCTIONS

1. Original and/or subsequent record used to evaluate the corner position.
2. Description of evidence found, note discrepancies in the record, state method of establishing lost or obliterated corners.
3. Description of monument and accessories set to perpetuate the corner position.
4. Sketch of corner, show all pertinent data which can best be shown in a sketch example, corner marking, topography ties, position of accessories, etc.
5. Certification must be signed and sealed by Land Surveyor registered in the State of Montana.
6. Fill in Cross Index & Section Diagram at bottom of sheet.

CERTIFIED CORNER RECORDATION

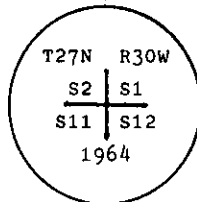
Corner NW Sec. Cor. S12 T. 27 N. R. 30 W. P.M.M. Lincoln County

- I. 1900 G.L.O. record by Burton S. Adams: Set a limestone, 18x10x8 ins., 12 ins. in the ground, and four bearing trees.

1964 BLM Remonumentation by R. L. Larimer and H. W. Grusing: The cor. of secs. 1, 2, 11, and 12, monumented with a limestone, 18x10x8 ins., loosely set and mkd. with 1 groove on the E. and 5 grooves on the S. faces, and witnessed by the remains of three of the original bearing trees.

At the corner point

Set an iron post, 30 ins. long, 2 1/2 ins. diam., 27 ins. in the ground, with brass cap mkd.



from which the remains of the original bearing trees:

- A stump, 18 ins. diam., bears N 51 1/4° E, 65 lks. dist., visible marks BT. (Record)
- A stump, 12 ins. diam., bears S 26° W, 49 lks. dist., visible marks BT. (Record: S 46° W, 49 lks.)
- A stump, 16 ins. diam., bears N 65 1/2° W, 70 lks. dist., visible marks BT. (Record)

The new bearing trees:

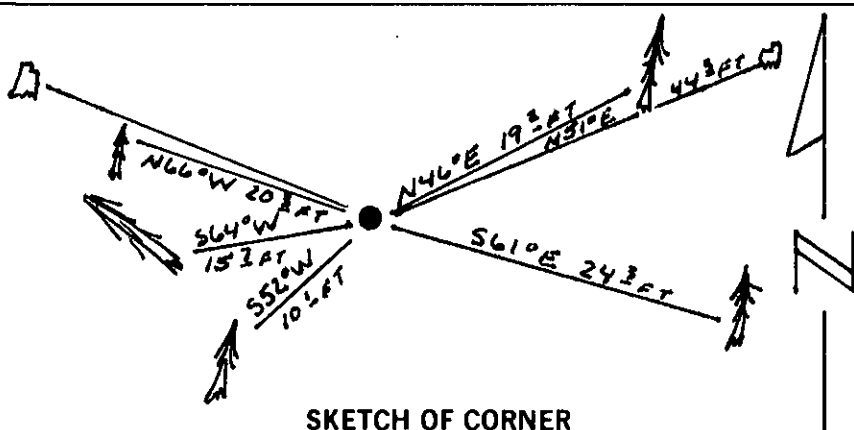
- A fir, 6 ins. diam., bears N 46 1/2° E, 29 lks. dist., mkd. T27N R30W S1 BT.
- A fir, 6 ins. diam., bears S 62° E, 36 lks. dist., mkd. T27N R30W S12 BT.
- A fir, 6 ins. diam., bears S 64° W, 24 lks. dist., mkd. T27N R30W S11 BT.
- A fir, 6 ins. diam., bears N 66° W, 31 lks. dist., mkd. T27N R30W S2 BT.

Bury the original stone alongside the iron post.

- II. Found a 2 1/2 in. diam. iron pipe, 6 ins. above ground, with a 3 1/4 in diam. BLM brass cap mkd as shown above, from which:

- A fir, 9 ins. diam., bears N 46° E, 19.2 ft. dist. (29 lks.), mkd. with a healed face. (BLM)
- A stump, 18 ins. diam., bears N 51° E, 44.3 ft. dist. (67 lks.), mkd. BT. (GLO Record: 65 lks.)
- A fir, 12 ins. diam., bears S 61° E, 24.3 ft. dist. (37 lks.), mkd with a healed face. (BLM Record: 36 lks.)
- A fallen fir, 12 ins. diam., bears S 64° W, 15.7 ft. dist. (24 lks.), mkd. with a healed face. (BLM)
- A fir, 10 ins. diam., bears N 66° W, 20.3 ft. dist. (31 lks.), mkd with a healed face.
- A rotten stump, bears N 65° W, 46.0 ft. dist. (70 lks.), no visible marks. (GLO)
- A fir, 6 ins. diam., bears S 52° W, 10.1 ft. dist., mkd RM. (No Record)

- III. Painted red bands around the bearing trees and attached Land Survey Monument and Bearing Tree signs.
Set a 6 ft. galvanized steel post with Land Survey Marker and Property Boundary Decals, West. 3 ft.
Magnetic Declination: 20° East



SKETCH OF CORNER

CERTIFICATION

Kevin A. Todd

I, Kevin A. Todd, certify the information shown here is true and correct.

Signature Ground Party Kevin A. Todd

Ronald A. Pearson

I, Ronald A. Pearson, certify that this Corner Record correctly represents work performed by me or under my direction in compliance with the "Corner Recordation Act" (70-22-101, et seq., M.C.A.).

Signature of Surveyor & Seal

Date: 10/26/92 Reg. No. 9008 LS

Employer: U.S. FOREST SERVICE

Office of Clerk and Recorder, County of Lincoln. This "corner record" was filed for record on Jan 11, 1993 was noted on the cross-index plat and is assigned page No. 5279, in book No. Coral M. Cronmeyer, B.S. County Official

Sec. 12

E-21 Cross Index No. 27 N 30 W T. 27 N R. 30 W PMM

• - corner this sheet