

## INSTRUCTIONS

1. Original and/or subsequent record used to evaluate the corner position.
2. Description of evidence found, note discrepancies in the record, state method of establishing lost or obliterated corners.
3. Description of monument and accessories set to perpetuate the corner position.
4. Sketch of corner, show all pertinent data which can best be shown in a sketch example, corner marking, topography ties, position of accessories, etc.
5. Certification must be signed and sealed by Land Surveyor registered in the State of Montana.
6. Fill in Cross Index & Section Diagram at bottom of sheet.

## CERTIFIED CORNER RECORDATION

Corner SE Sec. Cor S12 T. 27 N. R. 30 W. P.M.M. Lincoln County

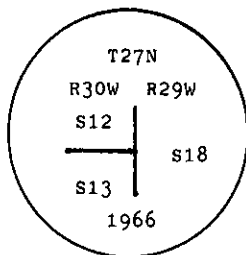
- I. 1900 G.L.O. record by Burton S. Adams: Set a granite stone, 24x9x7 ins., 18 ins. in the ground and four bearing trees.

1902 Frac. Subdivision and Retracement of the Frac. W. Bdry. by Burton S. Adams & W. C. Weeks: Intersect the west boundary of T27N R29W, 83 lks. N. of the cor. of secs. 7, 12, 13 & 18, which is a stone, 9x7x6 ins. above ground., marked and witnessed by the surveyor general. As it will hereafter refer to secs. 12 & 13 only, I efface the marks from the N.E. and S.E. bearing trees.

1966 BLM Remonumentation by Roy G. Leedy: The cor. of secs. 12 and 13, monumented with a granite stone, 20x10x6 ins., firmly set, mkd. with four notches on the S. and 2 on the N. edges, and witnessed by the remains of the original bearing trees.

At the corner point

Set an iron post, 30 ins. long, 2 1/2 ins. diam., 24 ins. in the ground, with brass cap mkd.



From which

The original bearing trees:

A stump, 28 ins. diam., bears S 16 1/2° W, 69 lks. dist., mkd. T27N R29W S13 BT.

A dead larch, 24 ins. diam., bears N 30 1/2° W, 124 lks. dist., visible marks T27N R W S12.

The new bearing trees:

A pine, 10 ins. diam., bears S 81° W, 97 lks. dist., mkd. T27N R30W S13 BT.

A larch, 8 ins. diam., bears N 13 3/4° W, 38 lks. dist., mkd. T27N R30W S12 BT.

- II. Found a 2 1/2 in. diam. iron pipe, 4 ins. out of the ground, with a 3 1/4 in diam. BLM brass cap mkd as shown above, from which:

A stump, 25 ins. diam., bears S 16° W, 45.2 ft. dist. (69 lks.), mkd. T27N R30W S13 BT.

A fallen larch, 24 ins. diam., bears N 30° W, 81.0 ft. dist. (123 lks.), mkd. with S12. (Record: 124 lks.)

A larch, 9 ins. diam., bears N 12° W, 25.0 ft. dist. (38 lks.), mkd. with visible scribe marks.

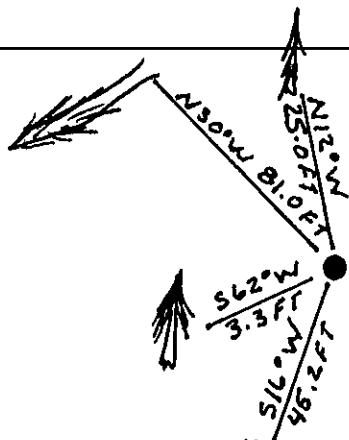
- III. Established one new bearing trees

A pine, 18 ins. diam., bears S 62° W, 3.3 ft. dist., mkd. T27N R30W S13 BT.

Painted red bands around the bearing trees and attached Land Survey Monument and Bearing Tree signs.

Set a 6 ft. galv. steel post with Land Survey Marker and Property Boundary Decals, South, 3 ft.

Magnetic Declination: 20° East



SKETCH OF CORNER

CERTIFICATION

I, Kevin A. Todd, certify the information shown hereon is correct.

Kevin A. Todd  
Signature of Ground Party

I, Ronald A. Pearson, certify that this Corner Record correctly represents work performed by me or under my direction in compliance with the "Corner Recordation Act" (70-22-101, et seq., M.C.A.)

Ronald A. Pearson  
Signature of Surveyor & Seal

Date: 10/26/92 Reg. No. 9008 LS

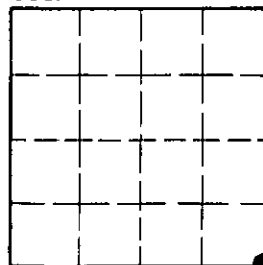
Employer: U.S. FOREST SERVICE

Office of Clerk and Recorder, County of Lincoln. This "corner record" was filed for record on Jan 11, 1993 was noted on the cross-index plat and is assigned page No. 5277, in book No. Coral M. Cumming By RB

County Official

Cross Index No. J-25 T. 27 N R. 30 W PMM

Sec. 12



• - corner this sheet