

## INSTRUCTIONS

1. Original and/or subsequent record used to evaluate the corner position.
2. Description of evidence found, note discrepancies in the record, state method of establishing lost or obliterated corners.
3. Description of monument and accessories set to perpetuate the corner position.
4. Sketch of corner, show all pertinent data which can best be shown in a sketch example, corner marking, topography ties, position of accessories, etc.
5. Certification must be signed and sealed by Land Surveyor registered in the State of Montana.
6. Fill in Cross Index & Section Diagram at bottom of sheet.

## CERTIFIED CORNER RECORDATION

Corner 1/4 Cor. of Secs. 11 & 12 T. 27 N. R. 30 W. P.M.M. Lincoln County

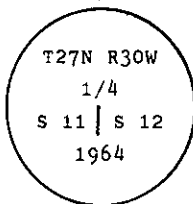
- I. 1900 G.L.O. record by Burton S. Adams: Set a limestone, 14x10x8 ins., 9 ins. in the ground, for 1/4 sec. cor., marked 1/4 on the west face, from which:

A tamarack, 24 ins. diam., bears N  $37^{\circ}15'$  W, 32 lks. dist., marked 1/4 S 11 BT.  
A fir, 12 ins. diam., bears N  $27^{\circ}$  E, 14 lks. dist., marked 1/4 S 12 BT.

- II. 1964 B. L. M. Remonumentation by R. L. Larimer & H. W. Grusing: The 1/4 sec. cor. of secs. 11 and 12, monumented with a limestone, 14 X 10 X 8 ins., firmly set and mkd. 1/4 on the W. face, and witnessed by the remains of the original bearing trees.

At the corner point

Set an iron post, 30 ins. long, 2 1/2 ins. diam., 27 ins. in the ground, with a brass cap mkd.:



from which

The remains of the original bearing trees:

A stump, 16 ins. diam., bears N  $27^{\circ}$  E, 14 lks. dist., with illegible scribing. (Record)  
A stump, 24 ins. diam., bears N  $37^{\circ}1/4'$  W, 32 lks. dist., mkd. 1/4 S 11 BT. (Record)

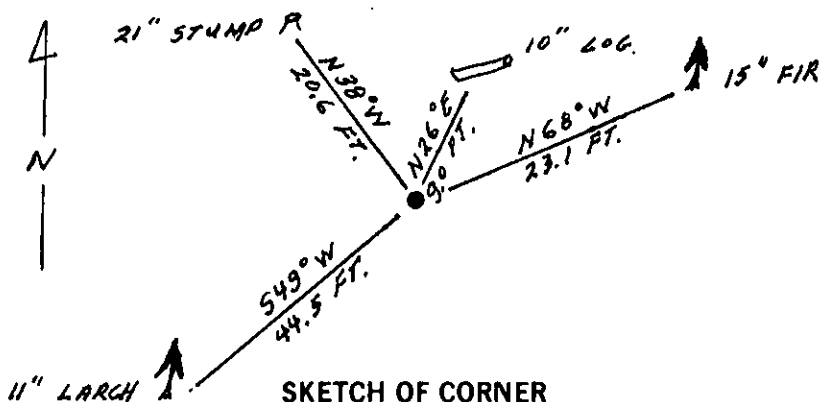
The new bearing trees:

A fir, 10 ins. diam., bears N  $68^{\circ}$  E, 35 lks. dist., mkd. 1/4 S 12 BT.  
A larch, 7 ins. diam., bears S  $49^{\circ}$  W, 67 lks. dist., mkd. 1/4 S 11 BT.

- II. Found a 2 1/2 in. diam. iron pipe, 4 ins. above the ground, with a 3 1/4 in. diam. B. L. M. brass cap marked as shown above, from which:

A fir, 15 ins. diam., bears N  $68^{\circ}$  E, 23.1 ft. dist., healed face.  
A larch, 11 ins. diam., bears S  $49^{\circ}$  W, 44.5 ft. dist., healed face.  
A larch stump, 21 ins. diam., bears N  $38^{\circ}$  W, 20.6 ft. dist., no visible marks.  
A fir log, 10 ins. diam., bears N  $26^{\circ}$  E, 9.0 ft. dist., no visible marks.

- III Painted red bands around the bearing trees and attached Land Survey Monument and Bearing Tree signs.  
Set a 6 ft. galvanized steel guard post with Land Survey Marker and Property Boundary decals, South, 3 ft.  
Magnetic Declination:  $20^{\circ}$  East



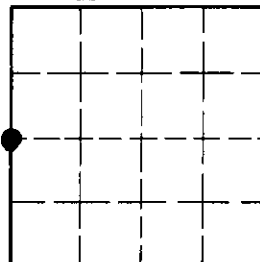
SKETCH OF CORNER

## CERTIFICATION

I, Thomas M. Hommel  
certify the information shown herein is true and correct.  
Signature Ground Party Chief  
I, Alvah F. Hughes  
certify that this Corner Record correctly represents work performed by me or under my direction in compliance with the "Corner Recordation Act" (70-22-101, et seq., M.C.A.)  
Signature of Surveyor & Seal  
Date: 12/7/92 Reg. No. 7322  
Employer: U.S. FOREST SERVICE

Office of Clerk and Recorder, County of Lincoln. This "corner record" was filed for record on 12-14-92 was noted on the cross-index plat and is assigned page No. 5147, in book No. Coral M Cummings by BB  
County Official

Sec. 12



• - corner this sheet

G-21 27 N 30 W  
Cross Index No. T. R. PMM,