

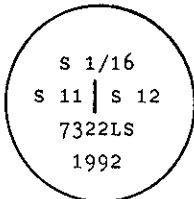
INSTRUCTIONS

1. Original and/or subsequent record used to evaluate the corner position.
2. Description of evidence found, note discrepancies in the record, state method of establishing lost or obliterated corners.
3. Description of monument and accessories set to perpetuate the corner position.
4. Sketch of corner, show all pertinent data which can best be shown in a sketch example, corner marking, topography ties, position of accessories, etc.
5. Certification must be signed and sealed by Land Surveyor registered in the State of Montana.
6. Fill in Cross Index & Section Diagram at bottom of sheet.

CERTIFIED CORNER RECORDATION

Corner S 1/16 Secs. 11 & 12 T. 27 N. R. 30 W. P.M.M. Lincoln County

- I. No record found at Lincoln County Courthouse.
- II. No evidence on the ground.
- III. At the determined corner position by survey, set a 2 1/2 in. diam. aluminum pipe, 30 ins. long, 5 ins. below the surface of the ground with attached 3 1/4 ins. diam. U.S.D.A. Forest Service aluminum capmarked as shown:

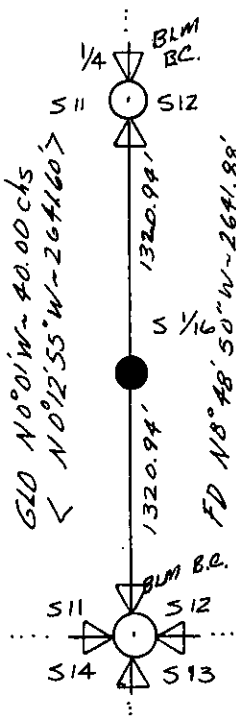


The corner falls in a hayfield with no suitable bearing trees within reasonable limits.

Set a 6 ft. galvanized steel guard post with "Land Survey Monument" and "Property Boundary" decals attached, West, 1 ft.

Posted a location poster on a wooden fence post, S 33° W, 10.4 ft. dist.

Magnetic Declination: East, 20°

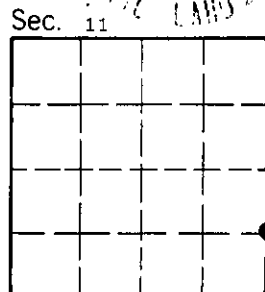


C.O.S. No. 999
T. Hill 5612-S

HAY FIELD

SKETCH OF CORNER

Office of Clerk and Recorder, County of Lincoln. This "corner record" was filed for record on 12-14-92 was noted on the cross-index plat and is assigned page No. 5143, in book No. _____ Coral M Cummings by LBS County Official



H-21 27 N 30 W
Cross Index No. _____ T. _____ R. _____ PMM

• - corner this sheet

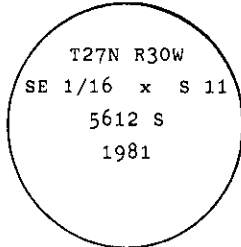
INSTRUCTIONS

1. Original and/or subsequent record used to evaluate the corner position.
2. Description of evidence found, note discrepancies in the record, state method of establishing lost or obliterated corners.
3. Description of monument and accessories set to perpetuate the corner position.
4. Sketch of corner, show all pertinent data which can best be shown in a sketch example, corner marking, topography ties, position of accessories, etc.
5. Certification must be signed and sealed by Land Surveyor registered in the State of Montana.
6. Fill in Cross Index & Section Diagram at bottom of sheet.

CERTIFIED CORNER RECORDATION

Corner SE 1/16 sec. cor. S 11 T. 27 N. R. 30 W. P.M.M. Lincoln County

I. 1981 U. S. F. S. Land Corner Record by T. C. Hill: At the determined corner position: Set a 2 1/2 " X 30" aluminum pipe 26" in the ground with aluminum cap marked as shown. Raise a collar of stone around the pipe.



from which:

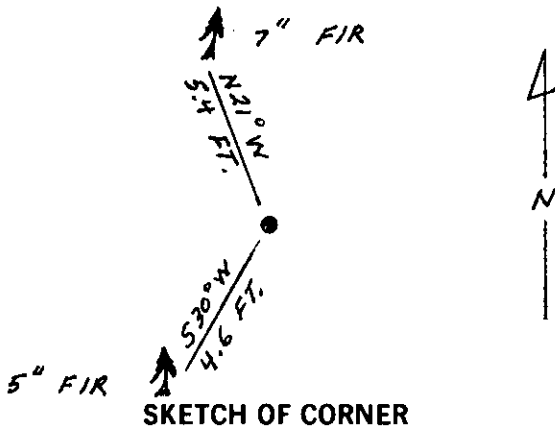
- A Doug fir, 7 ins. diam., bears N 21° W, 5.4 ft. dist., marked SE 1/16 S 11 BT.
- A Doug fir, 5 ins. diam., bears S 42° W, 4.6 ft. dist., marked SE 1/16 S 11 BT.
- A location poster attached to a 9 in. diam. larch, bears N 32° W, 10.8 ft. dist.

II. Found a 2 1/2 in. diam. aluminum pipe, 6 ins. above the ground with a 3 1/4 in. diam. aluminum U. S. F. S. cap marked as shown above, from which:

- A fir, 5 ins. diam., bears S 30° W, 4.6 ft. dist., pitched face. (Rec. S 42° W)
- A fir, 7 ins. diam., bears N 21° W, 5.4 ft. dist., healed face.

Painted a red band around each bearing tree and attached Land Survey Monument and Bearing Tree signs.

Magnetic Declination: East, 20°



SKETCH OF CORNER

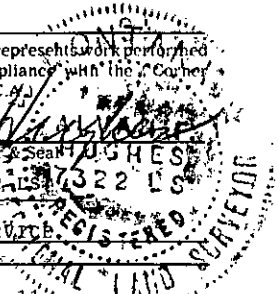
CERTIFICATION

I, Thomas M. Hommel
 certify the information shown herein is true and correct.
 Signature Ground Party Chief

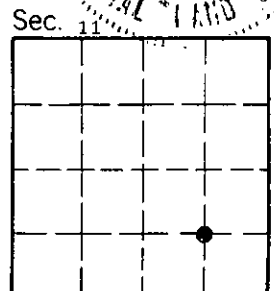
I, Alvah F. Hughes
 certify that this Corner Record correctly represents work performed by me or under my direction in compliance with the "Corner Recordation Act" (70-22-101, et seq., M.C.A.)
 Signature of Surveyor Seal ALVAH F. HUGHES

Date: 12/7/92 Reg. No. 7322-LS-7322-LS

Employer: U.S. FOREST SERVICE



Office of Clerk and Recorder, County of Lincoln. This "corner record" was filed for record on 12-14-92 was noted on the cross-index plat and is assigned page No. 5144, in book No. Coral M Cummings by BPS County Official



Cross Index No. H 20 T. 27 N R. 30 W P.M.M.

• - corner this sheet