

INSTRUCTIONS

1. Original and/or subsequent record used to evaluate the corner position.
2. Description of evidence found, note discrepancies in the record, state method of establishing lost or obliterated corners.
3. Description of monument and accessories set to perpetuate the corner position.
4. Sketch of corner, show all pertinent data which can best be shown in a sketch example, corner marking, topography ties, position of accessories, etc.
5. Certification must be signed and sealed by Registered Land Surveyor in State of Montana.
6. Fill in Cross Index & Section Diagram at bottom of sheet.

CERTIFIED CORNER RECORDATION

Corner SE 1/16th Section 23 T. 27N. R. 30W. P.M.M. Lincoln County

Date of Work: 9/15/83

1. No previous record.
2. No evidence found.
3. Set a 2 1/2 inch diam. X 30 inch long Aluminum post with lower half crimped and with a 3 1/4 inch diam. Aluminum Cap marked as shown below in sketch of corner; set 15 inches, more or less, above ground with raised rock mound around corner; rock mound and corner painted red and blue flagging tied around corner:

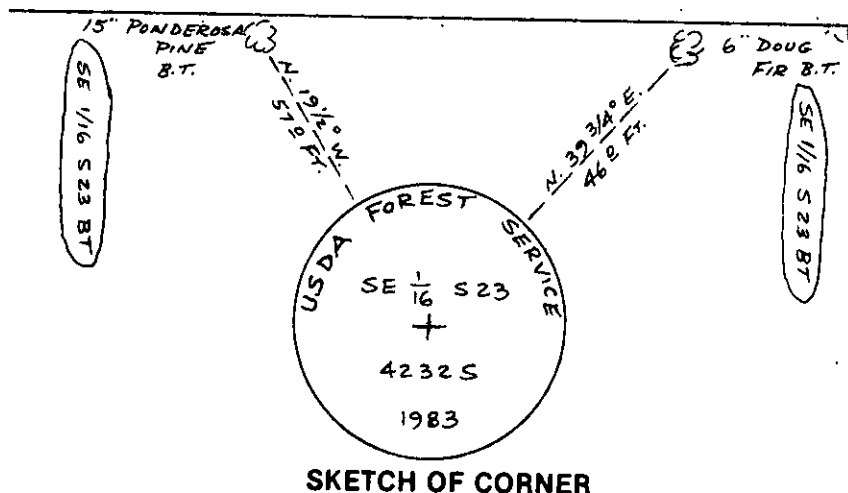
From which:

A Ponderosa Pine, 15 inches in diam., bears N. 19 1/2° W., 57.0 feet distant, marked: SE 1/16 S23 BT

A Douglas Fir, 6 inches in diam., bears N. 39 3/4° E., 46.0 feet distant, marked: SE 1/16 S23 BT

Bearing trees tagged with U.S.F.S. interior location posters; with faces of scribed blazes and snow blazes painted red and red ring painted above tags.

NOTE: Corner falls on an open portion of a steep southerly slope, generally on the point of a round Knob on the North side above Miller Creek and above the Miller Creek Road.



CERTIFICATION

I, L.A. Dolezal

certify the information shown herein is true and correct.

L.A. Dolezal
Signature Ground Party Chief

I, Melvin D. Lauteren

certify that this Corner Record correctly represents work performed by me or under my direction in compliance with the "Corner Recordation Act" (70-22-102, M.C.A.)

Melvin D. Lauteren
Signature of Surveyor & Seal

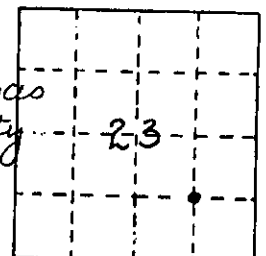
Date: 9-19-83 Reg. No. 4232 S

Employer: Kootenai Engineering, Inc.

SKETCH OF CORNER

Office of Clerk and Recorder, County of LINCOLN. This "corner record" Sec. 23-T27N-R30W-PMM
was filed for record on the 19th day of SEPT. 19 83, was noted on the cross-index plat and
is assigned page No. 2338, in book No. Janet BF Siegel by Betty L. Condo
County Official deputy

Cross Index No. 27 R. 30 PMM



• - corner this sheet