

CERTIFIED CORNER RECORDATION

Corner S 1/16 S13 T. 27 N. R. 30 W. P.M.M. Lincoln County

I. Record: 1977 COS No. 310 and Land Corner Record by J.H. Ninneman: Set a 5/8 inch diameter steel rod with PVC cap stamped JHN 4661S, from which:

- A pine, 14 ins. diam., bears N75°E., 19.80 ft. dist. mkd. S 1/16 S13 BT.
- A pine, 14 ins. diam., bears N76°W., 29.70 ft. dist. mkd. S 1/16 S14 BT.

II. Found: A 5/8 inch diameter rebar with a 1 1/4 inch diameter PVC cap marked as shown below from which:

- A pine stump, 16 ins. diam., bears N75°E., 19.80 ft. dist., with visible scribes.
- A fallen pine snag, 17 ins. diam., bears N76°W., 29.20 ft. dist. to exposed rootwad, with visible scribes.
- A Carsonite post bears North 5.70 ft. distant.
- A Carsonite post bears South 22.00 ft. distant.

III. Perpetuation: Establish two new bearing trees:

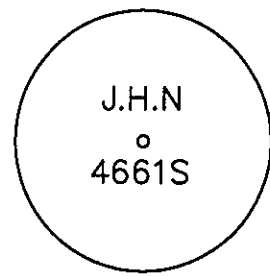
- A larch, 23 ins. diam., bears N5°E., 48.20 ft. dist., scribed S 1/16 S13 BT.
- A larch, 22 ins. diam., bears S23°W., 39.10 ft. dist., scribed S 1/16 S14 BT.

Painted faces and 6 in. wide red bands to all bearing trees and attached Land Survey Monument and Bearing Tree signs where needed.

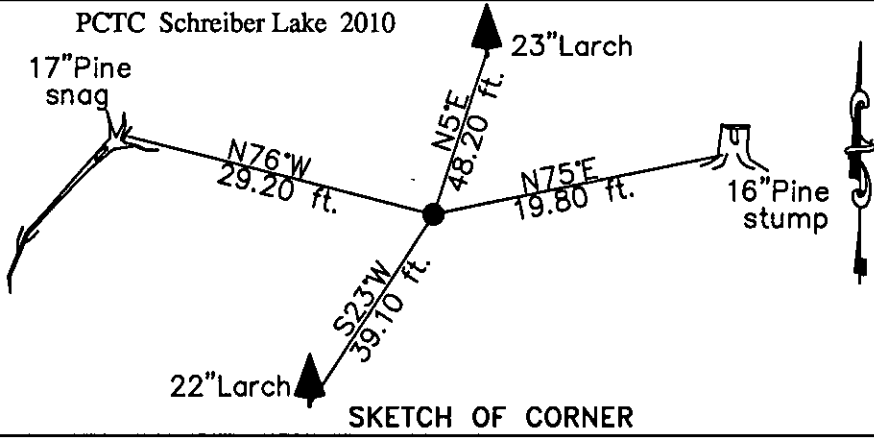
Set a steel post 1.00 ft. South of found monument with attached Survey Monument and Property Line stickers.

Magnetic declination: 18° East

Equipment used: Hand compass and loggers tape



Kootenai Surveyors Inc., 314 California Av., Libby, MT. 59923 (406) 293-4354



CERTIFICATION

I, Kelly Rooney
certify the information shown herein is true and correct.
Kelly Rooney
Signature Ground Party Chief

I, Alvah F. Hughes
certify that this Corner Record correctly represents work performed by me or under my direction in compliance with the "Corner Recordation Act" (70-22-101, et seq., M.C.A.)
Alvah F. Hughes
Signature of Surveyor & Seal

Date: 11/08/2010 Reg. No. 7322-LS
 Employer: Kootenai Surveyors Inc.

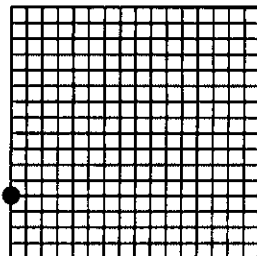
Office of Clerk and Recorder, County of Lincoln This "corner

record" was filed for record on 229749 BOOK: CCR CC&R'S PAGE: 11669 Pages: 1
 was noted on the cross-in STATE OF MONTANA LINCOLN COUNTY
 book No. RECORDED: 11/16/2010 2:25 KOI: CC&R'S
TAMMY D. LAUER CLERK AND RECORDER
 FEE: \$0.00 BY: *Tammy D. Lauer*
 TO: KOOTENAI SURVEYORS INC. P.O. BOX 393, LIBBY, MT 59923

Cross Index No. M 21 T. 27N R. 30W P.M., MT

Adopted July 1, 1981, Montana Board of Professional Engineers & Land Surveyors

Sec. 13



• corner this sheet