

# CERTIFIED CORNER RECORDATION

Corner SW 1/16 S13 T. 27 N. R. 30 W. P.M.M. Lincoln County

I. Record: 1977 COS No. 310 and Land Corner Record by J.H. Ninneman: Set a 5/8 inch diameter steel rod with PVC cap stamped JHN 4661S, from which:

A fir, 10 ins. diam., bears S6°E., 24.10 ft. dist. mkd. SW 1/16 S13 BT.  
A larch, 16 ins. diam., bears N45°E., 18.30 ft. dist. mkd. SW 1/16 S13 BT.

II. Found: A 5/8 inch diameter rebar with a 1 1/4 inch diameter PVC cap marked as shown below from which:

A fir, 16 ins. diam., bears S6°E., 24.10 ft. dist., with visible scribes.  
A larch, 17 ins. diam., bears N45°E., 18.30 ft. dist., with healed face.

A Carsonite post bears South 7.70 ft. distant.  
A Carsonite post bears West 6.80 ft. distant.

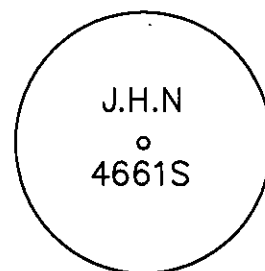
## III. Perpetuation:

Painted faces and 6 in. wide red bands to all bearing trees and attached Land Survey Monument and Bearing Tree signs where needed.

Set a steel post on line 1.00 ft. West of found monument with attached Survey Monument and Property Line stickers.

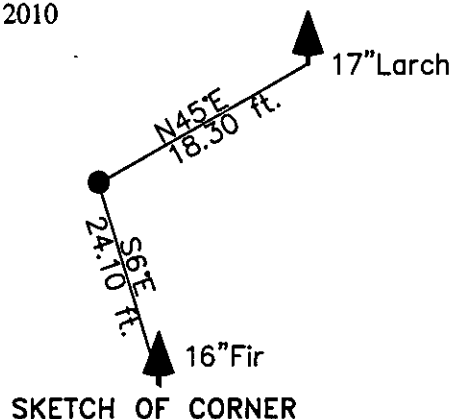
Magnetic declination: 18° East

Equipment used: Hand compass and loggers tape



Kootenai Surveyors Inc., 314 California Av., Libby, MT. 59923 (406) 293-4354

PCTC Schreiber Lake 2010



## CERTIFICATION

I, Kelly Rooney  
certify the information shown herein is true and correct.  
Kelly Rooney  
Signature Ground Party Chief  
ALVAH F. HUGHES  
7322-LS  
I, Alvah F. Hughes  
certify that this Corner Record correctly represents work performed by me or under my direction in compliance with the "Corner Recordation Act" (70-22-101, et seq., M.C.A.)  
Alvah F. Hughes  
Signature of Surveyor & Seal  
Date: 11/08/2010 Reg. No. 7322-LS  
Employer: Kootenai Surveyors Inc.

Office of Clerk and Recorder, County of Lincoln This "corner

record" was filed for record on \_\_\_\_\_

was noted on the cross-index \_\_\_\_\_

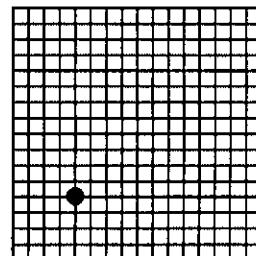
book No. \_\_\_\_\_

229748 BOOK: CCR CC&R'S PAGE: 11668 Pages: 1  
STATE OF MONTANA LINCOLN COUNTY  
RECORDED: 11/16/2010 2:20 KOI: CC&R'S  
TAMMY D. LAUER CLERK AND RECORDER  
FEE: \$0.00 BY: Tammy D. Lauer  
TO: KOOTENAI SURVEYORS INC. P.O. BOX 393, LIBBY, MT 59923

Cross Index No. M 22 T. 27N R. 30W P.M., MT

Adopted July 1, 1981, Montana Board of Professional Engineers & Land Surveyors

Sec. 13



• corner this sheet