

CERTIFIED CORNER RECORDATION

Corner W 1/16 S13 T. 27 N. R. 30 W. P.M.M. Lincoln County

I. Record: 1977 COS No. 310 and Land Corner Record by J.H. Ninneman: Set a 5/8 inch diameter steel rod with PVC cap stamped JHN 4661S, from which:

A fir, 10 ins. diam., bears N80°E., 22.20 ft. dist. mkd. W 1/16 S13 BT.  
A pine, 10 ins. diam., bears S32°W., 22.40 ft. dist. posted with BT sign only.

II. Found: A 5/8 inch diameter rebar with a 1 1/4 inch diameter PVC cap marked as shown below from which:

A fir, 18 ins. diam., bears N80°E., 22.20 ft. dist., with visible scribes.  
A Carsonite post bears East 6.50 ft. distant.  
A Carsonite post bears North 9.00 ft. distant.

III. Perpetuation: Establish one new bearing tree,

A larch, 9 ins. diam., bears S81°W., 33.90 ft. dist., scribed W1/16 S 24 BT.

Painted faces and 6 in. wide red bands to all bearing trees and attached Land Survey Monument and Bearing Tree signs where needed.

Set a steel post on line 3.00 ft. North of found monument with attached Survey Monument and Property Line stickers.

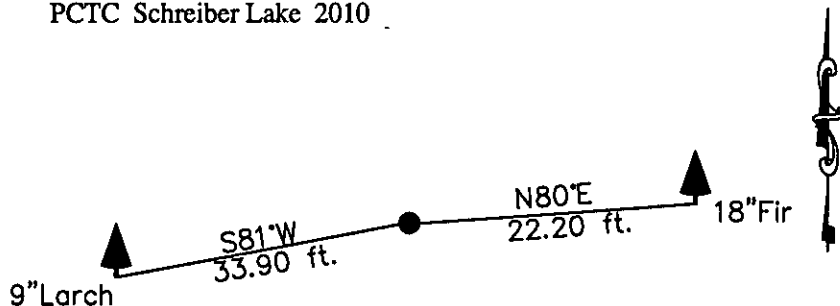
Magnetic declination: 18° East

Equipment used: Hand compass and loggers tape

J.H.N  
o  
4661S

Kootenai Surveyors Inc., 314 California Av., Libby, MT. 59923 (406) 293-4354

PCTC Schreiber Lake 2010



SKETCH OF CORNER

CERTIFICATION

I, Kelly Rooney  
certify the information shown herein is true and correct.

Kelly Rooney  
Signature Ground Party Chief

I, Alvah F. Hughes  
certify that this Corner Record correctly represents work performed by me or under my direction in compliance with the "Corner Recordation Act" (70-22-101, et seq., M.C.A.)

Alvah F. Hughes  
Signature of Surveyor & Seal

Date: 11/08/2010 Reg. No. 7322-LS

Employer: Kootenai Surveyors Inc.

Office of Clerk and Recorder, County of Lincoln This "corner

record" was filed for record on 229747 BOOK: CCR CC&R'S PAGE: 11667 Pages: 1

was noted on the c/o STATE OF MONTANA LINCOLN COUNTY

book No. RECORDED: 11/16/2010 2:15 KOI: CC&R'S

TAMMY D. LAUER CLERK AND RECORDER

FEE: \$0.00

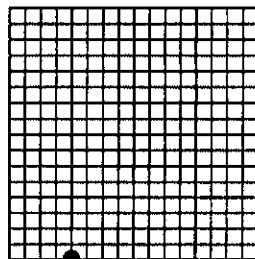
BY: [Signature]

TO: KOOTENAI SURVEYORS INC. P.O. BOX 393, LIBBY, MT 59923

Cross Index No. N 22 T. 27N R. 30W P.M., MT

Adopted July 1, 1981, Montana Board of Professional Engineers & Land Surveyors

Sec. 13



• corner this sheet