

CERTIFIED CORNER RECORDATION

Corner W 1/4 S13 T. 27 N. R. 30 W. P.M.M. Lincoln County

I. Record: 1900 GLO section subdivision by Burton S. Adams: Set limestone, 20X8X4 ins., 15 ins. in the ground from which:

A tamarack, 8 ins. diam., bears N.66°W., 32 lks. dist. marked 1/4 S14 BT.
 A pine, 7 ins. diam., bears S.47°15'E., 12 lks. dist. marked 1/4 S13 BT.

1969 BLM Remonumentation by Leedy: Set a iron post, 30 ins. long, 2 1/2 ins. diam., 24 ins. in the ground, with brass cap from which:

A larch, 12 ins. diam., bears S.38°E., 22 lks.(14.52 ft.) dist., mkd. 1/4 S13 BT.
 A larch, 10 ins. diam., bears S.60°W., 13 lks.(8.58 ft.) dist., mkd. 1/4 S14 BT.

II. Found: A 2 1/2 ins. diam., iron pipe with a 3 1/4 ins. diam., BLM brass cap mkd. as shown below from which:

A larch, 14 ins. diam., bears S.36°E.,(S.38°E.) 14.10 (14.52 record) ft. dist., with visible scribes.

A larch, 14 ins. diam., bears S.58°W.,(S.60°W.) 8.80 (8.58 record) ft. dist., with visible scribes.

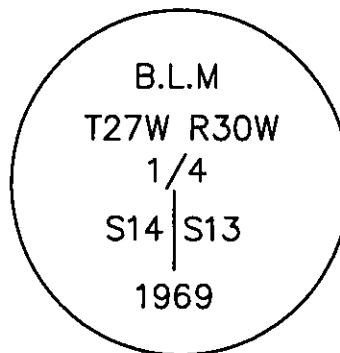
III. Perpetuation:

Painted faces and 6 in. wide red bands to all bearing trees and attached Land Survey Monument and Bearing Tree signs where needed.

Set a steel post with Land Survey Monument and Property Line stickers on line 3.00 ft. North of found monument.

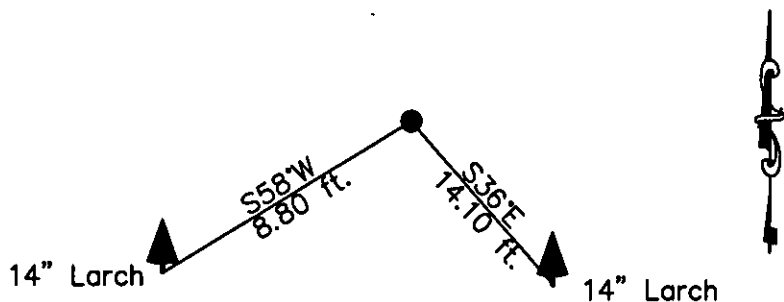
Magnetic declination: 18° East

Equipment used: Hand compass and loggers tape



Kootenai Surveyors Inc., 314 California Av., Libby, MT. 59923 (406) 293-4354

PCTC Schreiber Lake 2010



SKETCH OF CORNER

CERTIFICATION

I, Kelly Rooney
 certify the information shown herein is true and correct.
Kelly Rooney
 Signature Ground Party Chief

I, Alvah F. Hughes
 certify that this Corner Record correctly represents work performed by me or under my direction in compliance with the "Corner Recordation Act" (70-22-101, et seq., M.C.A.)
Alvah F. Hughes
 Signature of Surveyor & Seal

Date: 10/18/2010 Reg. No. 7322LS
 Employer: Kootenai Surveyors Inc.

Office of Clerk and Recorder, County of Lincoln This "corner

record" was filed for record on 229746 BOOK: CCR CC&R'S PAGE: 11666 Pages: 1

was noted on the cross- STATE OF MONTANA LINCOLN COUNTY

book No. RECORDED: 11/16/2010 2:10 KOI: CC&R'S

TAMMY D. LAUER CLERK AND RECORDER

FEE: \$0.00

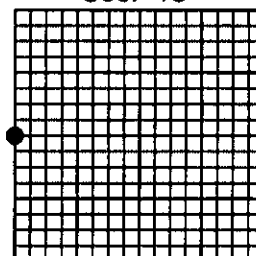
BY *Tammy D. Lauer*

TO: KOOTENAI SURVEYORS INC. P.O. BOX 393, LIBBY, MT 59923

Cross Index No. L 21 T. 27N R. 30W P.M., MT

Adopted July 1, 1981, Montana Board of Professional Engineers & Land Surveyors

Sec. 13



• corner this sheet