

CERTIFIED CORNER RECORDATION

Corner W 1/16 S2 T. 27 N. R. 30 W. P.M.M. Lincoln County

I. Record: None

II. Found: No monument or accessories found during area search.

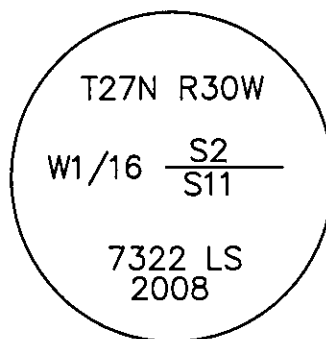
III. Perpetuation: At the corner point, determined by survey, set a 2 1/2 ins. diam. Aluminum pipe 30 ins. long 27 ins. in the ground, with a 3 1/4 ins. diam. Aluminum cap marked as shown below from which:

A fir, 14 ins. diam., bears N. 51° E., 2.90 ft. dist., scribed W 1/16 S2 BT.
A fir, 16 ins. diam., bears S. 73° W., 44.60 ft. dist., scribed W 1/16 S11 BT.
A steel gate post, 4 ins. diam., bears N. 63° W., 4.30 ft. dist.

Painted faces and 6 in. wide red bands to all bearing trees and attached Land Survey Monument and Bearing Tree signs.

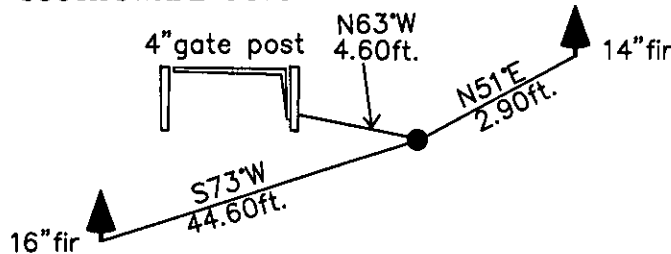
Magnetic declination: 18° East

Equipment used: Hand compass and loggers tape



Kootenai Surveyors Inc., 314 California Av., Libby, MT. 59923 (406) 293-4354

SOUTH SWAMP- PCTC



SKETCH OF CORNER

CERTIFICATION

I, Kelly Rooney
certify the information shown herein is true and correct.
Kelly Rooney
Signature Ground Party Chief
I, Alvah F. Hughes
certify that this Corner Record correctly represents work performed by me or under my direction in compliance with the "Corner Recordation Act" (70-22-101, et seq., M.C.A.)
Alvah F. Hughes
Signature of Surveyor & Seal
Date: 11/08/2008 Reg. No. 7322-LS
Employer: Kootenai Surveyors Inc.

Office of Clerk and Recorder, County of Lincoln This "corner

record" was filed for re: 215759 BOOK: CCR CC&R'S PAGE: 11281 Pages: 1

was noted on the cross STATE OF MONTANA LINCOLN COUNTY
RECORDED: 12/01/2008 2:05 KOI: CC&R'S

book No. TAMMY D. LAUER CLERK AND RECORDER

FEE: \$0.00

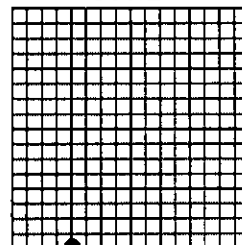
BY Alvah F. Hughes

TO: KOOTENAI SURVEYORS INC. P.O. BOX 393, LIBBY, MT 59923

Cross Index No. E 18 T. 27N R. 30W P.M., MT

Adopted July 1, 1981, Montana Board of Professional Engineers & Land Surveyors

Sec.2



• corner this sheet