

INSTRUCTIONS

1. Original and/or subsequent record used to evaluate the corner position.
2. Description of evidence found, notations in the record, state method of establishing lost or obliterated corners.
3. Description of monument and accessories set to perpetuate the corner position.
4. Sketch of corner, show all pertinent data which can best be shown in a sketch example, corner marking, topography ties, position of accessories, etc.
5. Certification must be signed and sealed by Land Surveyor registered in the State of Montana.
6. Fill in Cross Index & Section Diagram at bottom of sheet.

CERTIFIED CORNER RECORDATION

Corner W1/4 Sec. 25 T. 27 North R. 30 West P.M.M. Lincoln County

GLO – Burton S. Adams - 1900

...40.00 chains Set a lime stone 20 x 10 x 4 inches, 15 inches in the ground, for 1/4 Section corner, marked 1/4 on west face, from which:

- A 10" pine bears N48°15'E, 25 links (16.5'), marked "1/4 S25 BT"
- A 14" tamarack bears S43°15'W, 16 links (10.6'), marked "1/4 S26 BT"

FOUND:

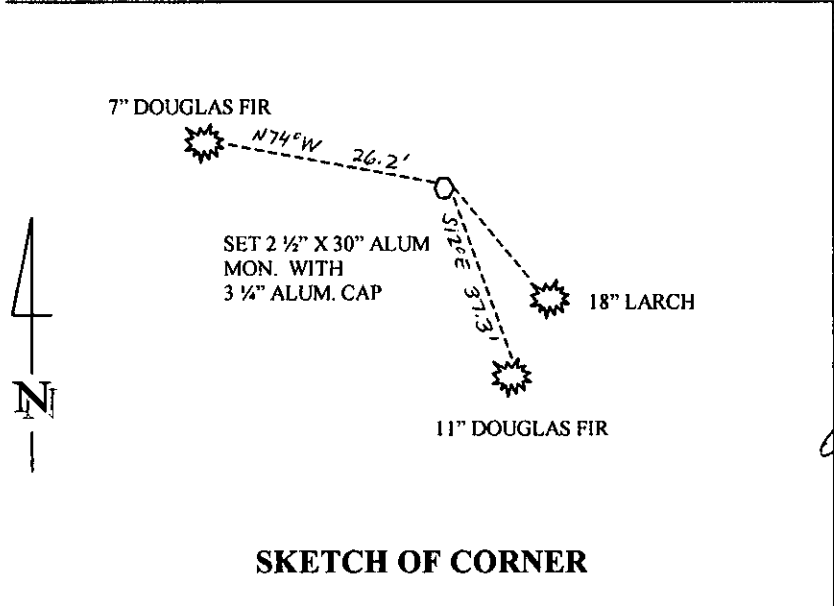
Found the original stone of record size with markings lying on the ground, out of position.
An original 18" diameter Larch bearing tree with visible scribing on ground

PERPETUATION:

Set a standard 2 1/2" x 30" aluminum monument with 3/4" aluminum cap, marked as shown below, record bearing and distance (N43°15'E, 10.6') from found original 14" Larch root impression, from which:
Establish two new bearing trees

- An 11" Douglas Fir bears S12°E, 37.3 feet distant, blaze and scribe "1/4 S25 BT".
- A 7" Douglas Fir bears N74°W, 26.2 feet distant, blaze and scribe "1/4 S26 BT".

Bearing trees were painted red and bearing tree tags attached. Distances were measured to an aluminum nail in side center of trees.



SKETCH OF CORNER

CERTIFICATION

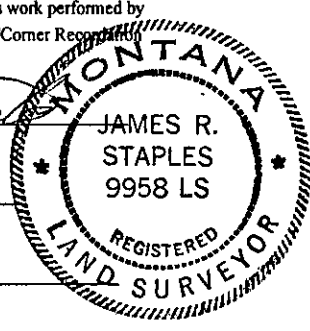
I, James R. Staples
Certify the information shown herein is true and correct.
James R. Staples
Signature Ground Party Chief

I, James R. Staples
certify that this Corner Record correctly represents work performed by me or under my direction in compliance with the "Corner Record Act" (70-22-101, et seq., M.C.A.)

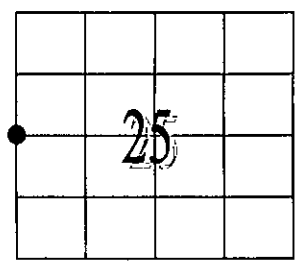
James R. Staples
Signature of Surveyor & Seal

Date: 9/14/05 Reg. No 9958LS

Employer: J.R.S. Surveying, Inc.



Office of Clerk and Recorder County of _____ This "corner
 188052 BOOK: CCR CC&R'S PAGE: 10848 Pages: 1
 record" was filed for record STATE OF MONTANA LINCOLN COUNTY
 was noted on the cross-index RECORDED: 09/20/2005 10:20 KOI: CC&R'S
 book no. _____ CORAL M. CUMMINGS CLERK AND RECORDER
 FEE: \$0.00 BY: *Heanni Dennis*
 TO: FILED, _____ Deputy
 County Official



Cross Index No. T21 T. 27N R. 30W PMM

• - Corner this sheet