

INSTRUCTIONS

1. Original and/or subsequent record used to evaluate the corner position.
2. Description of evidence found, note discrepancies in the record, state method of establishing lost or obliterated corners.
3. Description of monument and access to perpetuate the corner position.
4. Sketch of corner, show all pertinent data which can best be shown in a sketch example, corner marking, topography ties, position of accessories, etc.
5. Certification must be signed and sealed by Land Surveyor registered in the State of Montana.
6. Fill in Cross Index & Section Diagram at bottom of sheet.

CERTIFIED CORNER RECORDATION

Corner E1/4 Sec. 25 T. 27 North R. 30 West P.M.M. Lincoln County

GLO – Burton S. Adams - 1900

....40.00 chains Set a granite stone 18 x 8 x 6 inches, 12 inches in the ground, for 1/4 Section corner, marked 1/4 on west face, from which:

A 7" pine bears N83°45'W, 31 links (20.46'), marked "1/4 S25 BT"

A 7" pine bears S17°30'E, 21 links (13.86'), marked "1/4 S30 BT"

FOUND:

Found granite stone of record size clearly marked 1/4 on west face, set firmly in place. No evidence of original bearing trees.

SET:

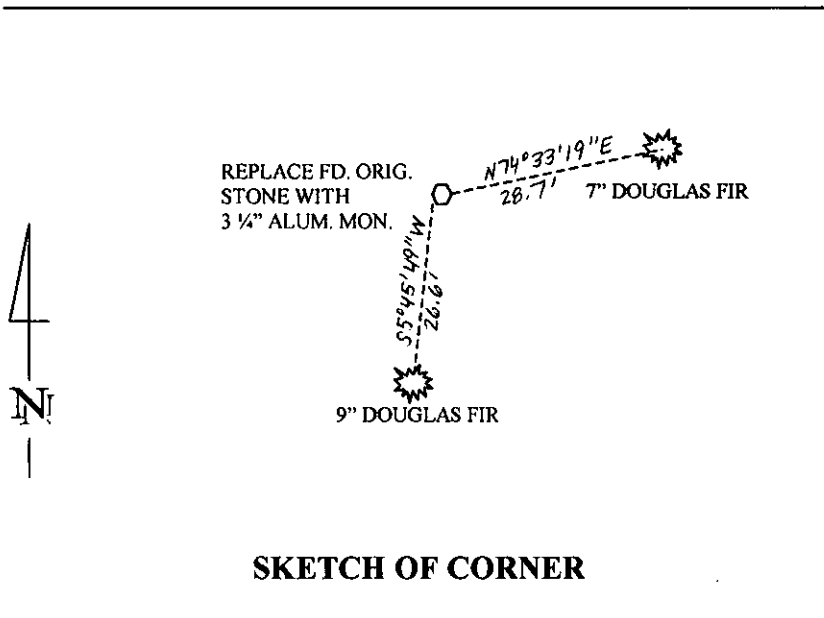
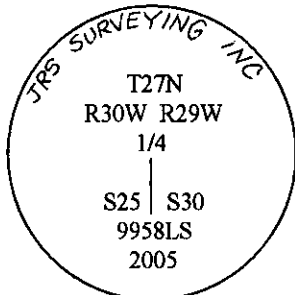
Set a standard 2 1/2" x 30" aluminum monument with 3/4" aluminum cap, marked as shown below, 24" in the ground; from which:

A 9" Douglas Fir bears S5°45'49"W, 26.6 feet distant, blaze and scribe "1/4 S30 BT".

A 7" Douglas Fir bears N74°33'19"E, 28.7 feet distant, blaze and scribe "1/4 S25 BT".

Bury original stone along south side of monument and build rock cairn around base of monument 3' x 2' x 6".

Bearing trees were painted red and bearing tree tags attached. Distances were measured to an aluminum nail in side center of trees.



SKETCH OF CORNER

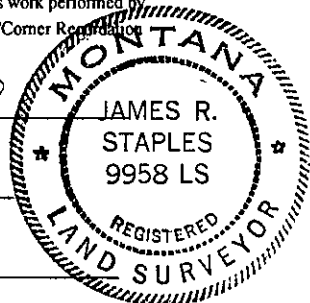
CERTIFICATION

I, James R. Staples
 Certify the information herein is true and correct.
James R. Staples
 Signature Ground Party Chief

I, James R. Staples
 certify that this Corner Record correctly represents work performed by me or under my direction in compliance with the "Corner Recordation Act" (70-22-101, et seq., M.C.A.)
James R. Staples
 Signature of Surveyor & Seal

Date: 9/14/05 Reg. No 9958LS

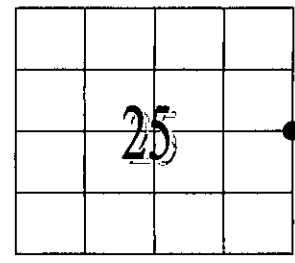
Employer: J.R.S. Surveying, Inc.



Office of Clerk and Recorder, County of _____ This "corner

record" was filed for record on _____
 was noted on the cross-index p _____
 book no. _____

188049 BOOK: CCR CC&R'S PAGE: 10845 Pages: 1
 STATE OF MONTANA LINCOLN COUNTY
 RECORDED: 09/20/2005 10:00 KOI: CC&R'S
 CORAL M. CUMMINGS CLERK AND RECORDER
 FEE: \$0.00 BY: *Jeanne Lewis*
 TO: FILED *Deputy*



Cross Index No. T25 T. 27N R. 30W PMM

Adopted July 1, 1981, Montana Board of Professional Engineers & Land Surveyors

• - Corner this sheet