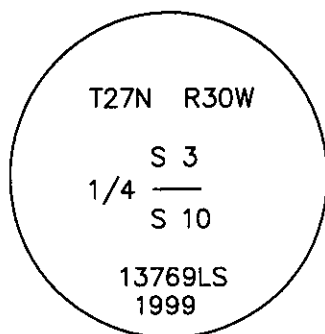


CERTIFIED CORNER RECORDATION

Corner 1/4 Secs. 3 & 10 T. 27 N. R. 30 W. P.M.M. LINCOLN County

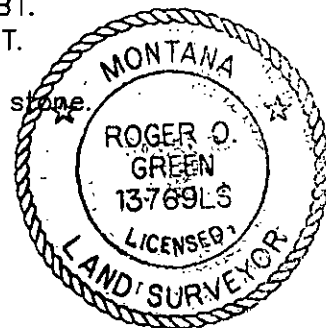
- I. Record: 1900 original record by Burton S. Adams: 39.86 chains, "Set a lime stone, 14x8x6 ins., 9 ins. in the ground, for 1/4 sec. cor., marked 1/4 on N. face, from which
- A fir, 5 ins. diam., bears S.83°15'E 16 lks. dist., marked 1/4 S., 10, B.T.
A fir, 6 ins. diam., bears N.52°30'W., 6 lks. dist., marked 1/4 S. 3, B.T.
- II. Found: A stone, 7x7x4 ins. buried in the ground, marked 1/4 on the N. face, from which the remains of the original bearing trees
- A fir, 15 ins. diam., bears S.38°E., 10.7 ft. dist., with scribe marks 1/4 S 10 B visible on open blaze.
A root crown and rotten remains, bears N.52°W., 3.96 ft. dist., no visible scribing
- III. Set: At the corner point, set a U.S.F.S. aluminum post, 30 ins. long, 2 1/2 ins. diam., 20 ins. in the ground, encircled by a mound of stone to the top of a 3 1/4" diam., aluminum cap marked as shown:



from which new bearing trees:

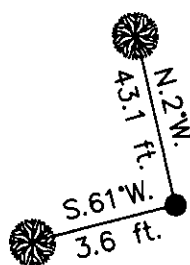
- A fir, 13 ins. diam., bears S.61°W., 3.6 ft. dist., mkd. 1/4 S 10 BT.
A fir, 14 ins. diam., bears N.2°W., 43.1 ft. dist., mkd. 1/4 S 3 BT.

Deposit the mkd. stone alongside the aluminum post in the mound of stone.



Survey crew: Tom Hommel, Rex Rice & Vince Huntsberger
Magnetic declination: 20° East assumed
Equipment used: Hand compass and loggers tape

U. S. Forest Service, Supervisors Office, 1101 Hwy. 2 West, Libby, MT. 59923 (406) 293-6211



SKETCH OF CORNER

NOT TO SCALE

CERTIFICATION

I, Thomas M. Hommel 10800LS
certify the information shown herein is true and correct.

Signature Ground Party Chief

I, Roger O. Green
certify that this Corner Record correctly represents work performed by me or under my direction in compliance with the "Corner Recordation Act" (70-22-101, et seq., M.C.A.)

Signature of Surveyor & Seal

Date: 05/08/2003 Reg. No. 13769LS

Employer: U. S. Forest Service

Office of Clerk and Recorder, County of Lincoln This "corner record" was filed for record on 5-27-2004

was noted on the cross-index plat and is assigned page No. 10642, in

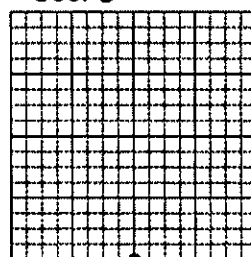
book No. 176504
doc.

Jeanne Dennis
County Official

Cross Index No. E-15 T. 27N. R. 30W. P.M., MT

Adopted July 1, 1981, Montana Board of Professional Engineers & Land Surveyors

Sec. 3



• corner this sheet