

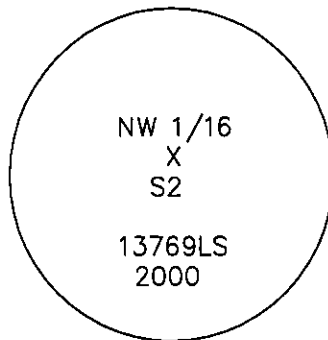
# CERTIFIED CORNER RECORDATION

Corner NW 1/16 S2 T. 27 N. R. 30 W. P.M.M. LINCOLN County

I. Record: No previous survey.

II. Found: No evidence found.

III. Set: At the position determined by survey, set a 5/8" by 24" steel rebar, 20" in the ground with a 3 1/4" diameter aluminum U.S.F.S cap marked as shown:

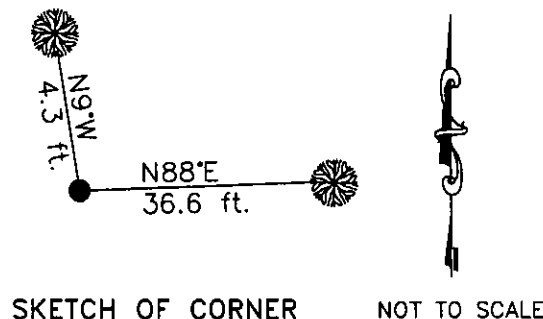


From which:

A fir, 10 ins. diam., bears N88°E, 36.6 ft. dist., mkd. NW 1/16 S2 BT.  
A fir, 9 ins. diam., bears N9°W, 4.3 ft. dist., mkd. NW 1/16 S2 BT.  
Monument is set in a rock outcrop.

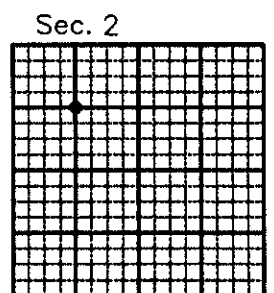
Painted red bands around BT's and attached Bearing Tree and Land Survey Monument signs.

Date of Fieldwork: 9/18/2001  
Survey crew: Steve Boyer, Tom Hommel  
Magnetic declination: 20° East assumed  
Equipment used: Hand compass and loggers tape  
U.S. Forest Service, Supervisors Office, 1101 Hwy. 2 West, Libby, MT 59923 (406) 293-6211



CERTIFICATION  
I, Steven A. Boyer 9358LS  
certify the information shown herein is true and correct.  
Steven A. Boyer  
Signature of Party Chief  
I, Roger O. Green  
certify that this Corner Record correctly represents work performed by me or under my direct supervision in accordance with the "Corner Recordation Act" (70-22-101, et seq., M.C.A.)  
Roger O. Green  
Signature of Surveyor  
Date: 9/18/2001 Reg. No. 13769LS  
Employer: U. S. Forest Service

Office of Clerk and Recorder, County of Lincoln This "corner record" was filed for record on Feb 19, 2002 was noted on the cross-index plot and is assigned page No. 10550 in book No. Coral M. Cumming By 211 County Official



Cross Index No. B-18 T. 27N. R. 30W. P.M., MT  
Adopted July 1, 1981, Montana Board of Professional Engineers & Land Surveyors

• corner this sheet