

# CERTIFIED CORNER RECORDATION

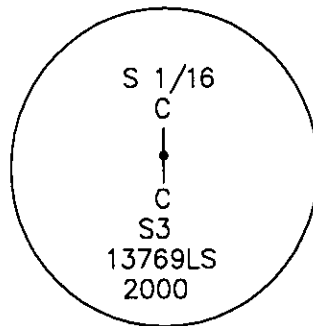
Corner CS 1/16 Sec. 3 T. 27 N. R. 30 W. P.M.M. LINCOLN County

I. Record: No previous survey.

II. Found: No evidence found.

III. At the corner point

Set an iron rebar, 24 ins. long, 5/8 ins. diam., 24 ins. in the ground, with a 3 1/4 ins. diam., aluminum U.S.F.S cap mkd. as shown:



From which:

A fir, 11 ins. diam., bears S82°E, 12.2 ft. dist., mkd. CS 1/16 S3 BT.

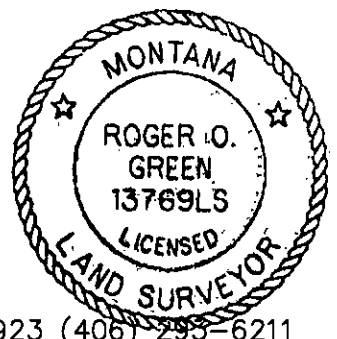
A hemlock, 12 ins. diam., bears S2°W, 37.0 ft. dist., mkd. CS 1/16 S3 BT.

Painted red bands around BT's and attached Bearing Tree and Land Survey Monument signs.

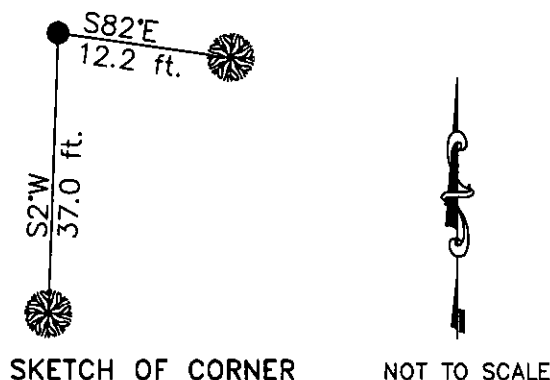
Survey crew: Steve Boyer, Tom Hommel

Magnetic declination: 20° East assumed

Equipment used: Hand compass and loggers tape

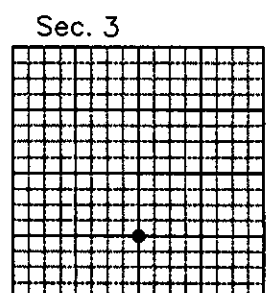


U. S. Forest Service, Supervisors Office, 1101 Hwy. 2 West, Libby, MT. 59923 (406) 293-6211



**CERTIFICATION**  
 I, Steven A. Boyer 9750LS  
 certify the information shown herein is true and correct.  
Steve A. Boyer  
 Signature Ground Party Chief  
 I, Roger O. Green  
 certify that this Corner Record correctly represents work  
 performed by me or under my direction in compliance with  
 the "Corner Recordation Act" (70-22-101, et seq., M.C.A.)  
Roger O. Green  
 Signature of Surveyor & Seal  
 Date: 1/24/2001 Reg. No. 13769LS  
 Employer: U. S. Forest Service

Office of Clerk and Recorder, County of Lincoln This "corner  
 record" was filed for record on Jan 25, 2001  
 was noted on the cross-index plat and is assigned page No. 10507, in  
 book No. Coral M. Cumming By & B  
 County Official



Cross Index No. D-15 T. 27N. R. 30W. P.M., MT

Adopted July 1, 1981, Montana Board of Professional Engineers & Land Surveyors

• corner this sheet