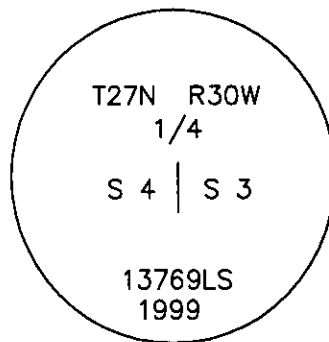


CERTIFIED CORNER RECORDATION

Corner 1/4 Secs. 3 & 4 T. 27 N. R. 30 W. P.M.M. LINCOLN County

- I. Record: 1900 original record by Burton S. Adams: 40.42 chains, "Set a lime stone, 18x14x6 ins., 12 ins. in the ground, for 1/4 sec. cor., marked 1/4 on the W. face, from which:
A fir, 10 ins. diam., bears S.82°30'W., 50 lks. dist., marked 1/4 S. 4, B.T.
A fir, 28 ins. diam., bears N.82°E., 30 lks. dist., marked 1/4 S. 3, B.T.
- II. Found: A stone 14x6x5 ins. out of the ground, firmly set, marked 1/4 on the West face, from which the remains of the original bearing trees
A rotten fir stump, bears N.82°E., 29.8 ft. dist., no visible scribe (Record 19.8 ft.)
A fir 16 ins. diam., bears S.82°W., 33.0 ft. dist., with scribe marks 1/4 S4 visible on open blaze.
- III. At the corner point
Set a U.S.F.S. aluminum post, 30 ins. long, 2 1/2 ins. diam., 20 ins. in the ground, encircled by a mound of stone to the top of a 3 1/4 ins. diam., aluminum cap marked as shown:

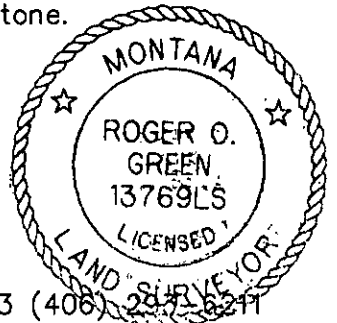


from which new bearing tree:

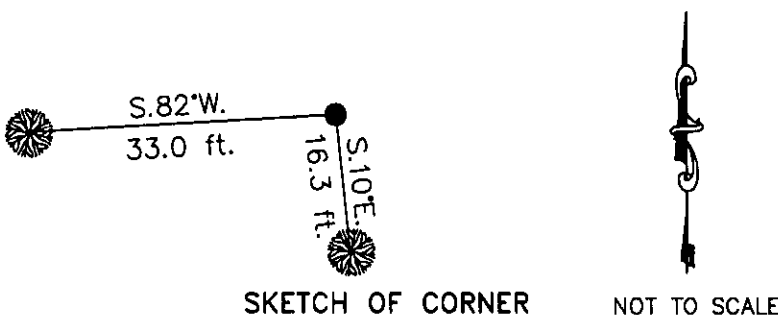
A fir, 10 ins. diam., bears S.10°E., 16.3 ft. dist., mkd. 1/4 S 3 BT.

Deposit the mkd. stone alongside the aluminum post in the mound of stone.

Survey crew: Rex Rice & Vince Huntsberger
Magnetic declination: 20° East assumed
Equipment used: Hand compass and loggers tape



U. S. Forest Service, Supervisors Office, 1101 Hwy. 2 West, Libby, MT. 59923 (406) 287-6211



SKETCH OF CORNER NOT TO SCALE

CERTIFICATION

I, Rex Rice
certify the information shown herein is true and correct.

Signature Ground Party Chief

I, Roger O. Green
certify that this Corner Record correctly represents work performed by me or under my direction in compliance with the "Corner Recordation Act" (70-22-101, et seq., M.C.A.)

Roger O. Green
Signature of Surveyor & Seal

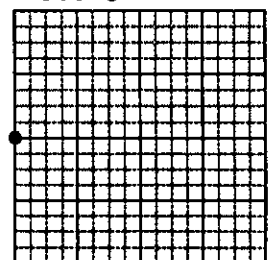
Date: 1/24/2001 Reg. No. 13769LS

Employer: U. S. Forest Service

Office of Clerk and Recorder, County of Lincoln This "corner record" was filed for record on Jan 25, 2001 was noted on the cross-index plat and is assigned page No. 10503 in book No. Coral M. Cumming By RB

County Official

Sec. 3



• corner this sheet

Cross Index No. C-13 T. 27N. R. 30W. P.M., MT

Adopted July 1, 1981, Montana Board of Professional Engineers & Land Surveyors