

CERTIFIED CORNER RECORDATION

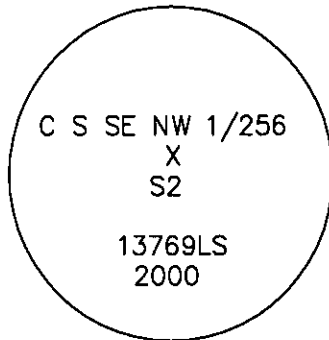
Corner C-S-SE-NW 1/256 S2 T. 27 N. R. 30 W. P.M.M. LINCOLN County

I. Record: No previous survey.

II. Found: No evidence found.

III. At the corner point

Set an iron rebar, 24 ins. long, 5/8 ins. diam., 25 ins. in the ground, with a 3 1/4 ins. diam., aluminum U.S.F.S cap mkd. as shown:



From which:

A larch, 10 ins. diam., bears N13°E, 112.5 ft. dist., mkd. CSSENW 1/256 S2 BT.
 A pine, 18 ins. diam., bears N89°E, 61.6 ft. dist., mkd. "X" BT.

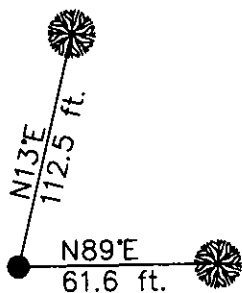
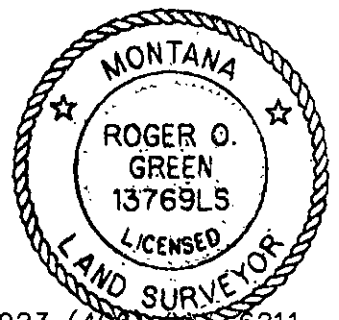
Set 2, 4 in. x 4 in. wood posts, 3 ft. north and east of the corner, with Property Boundary and Land Survey Monument signs attached. Painted red bands around BT's and attached Bearing Tree and Land Survey Monument signs.

Survey crew: Steve Boyer, Tom Hommel

Magnetic declination: 20° East assumed

Equipment used: Hand compass and loggers tape

U. S. Forest Service, Supervisors Office, 1101 Hwy. 2 West, Libby, MT. 59923 (406) 835-6211



SKETCH OF CORNER NOT TO SCALE



CERTIFICATION

I, Steven A. Boyer 9750LS
 certify the information shown herein is true and correct.
Steven A. Boyer
 Signature Ground Party Chief

I, Roger O. Green
 certify that this Corner Record correctly represents work performed by me or under my direction in compliance with the "Corner Recordation Act" (70-22-101, et seq., M.C.A.)
Roger O. Green
 Signature of Surveyor & Seal

Date: 1/24/2001 Reg. No. 13769LS

Employer: U. S. Forest Service

Office of Clerk and Recorder, County of Lincoln. This "corner

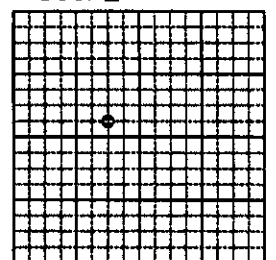
record" was filed for record on Jan 25, 2001

was noted on the cross-index plat and is assigned page No. 10501 in

book No. _____

Coral M. Cumming BLS
 County Official

Sec. 2



• corner this sheet

Cross Index No. B.75-18.5 T. 27N. R. 30W. P.M., MT

Adopted July 1, 1981, Montana Board of Professional Engineers & Land Surveyors