

CERTIFIED LAND CORNER RECORDATION

DESCRIPTION OF CORNER EVIDENCE FOUND, AND ORIGINAL RECORD (IF KNOWN)

Description of corners found or set appear with diagram ON REVERSE SIDE.

DESCRIPTION OF MONUMENT AND ACCESSORIES ESTABLISHED  
TO PERPETUATE THE ORIGINAL LOCATION OF THIS CORNER:

Date of work: 12/80

Monuments and accessories shown and described in diagram ON REVERSE SIDE.

SKETCH, WITH COURSE AND DISTANCE TO ADJACENT CORNERS IF DETERMINED IN THIS SURVEY.  
(MAY SKETCH OR PASTE REPRODUCTION ON REVERSE SIDE.)

SEE OTHER SIDE

Surveyor's Seal

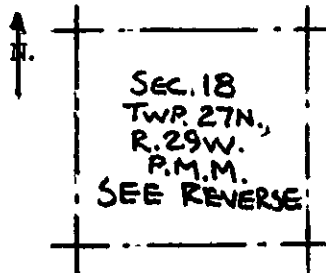
I, David Stanley  
certify that the information shown herein is true and correct.

*David B. Stanley*  
Signature of Ground Party Chief

I, Jack H. Ninneman  
certify that I have carefully performed or reviewed the work done on the diagrammed corner as reported on this recordation form and approve the same.

*Jack H. Ninneman*  
Signature of Surveyor

DIAGRAM OF CORNER:



= Corner recorded on the sheet

46615  
Registration Number

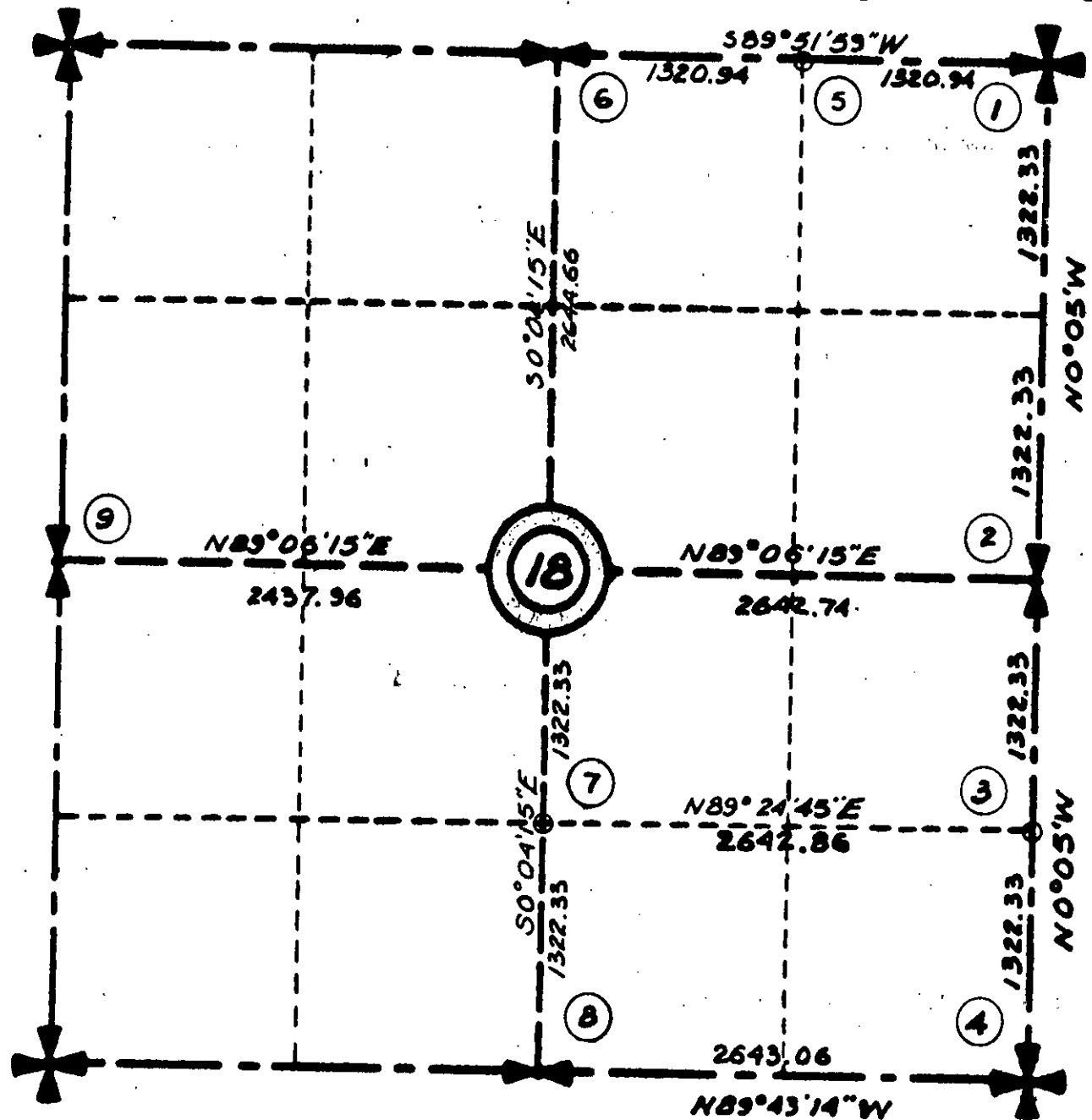
Office of Clerk and Recorder, County of Lincoln

This "corner record" was filed for record on the 28th day of January, 1981, was noted on the cross-index plat and is assigned page No. 974, in book No. 1

*Clemens L. Tughray*  
County Official

Cross Index No. J-5 T. 27N R. 29W Mer.  
L-5 J-4 N-3  
M-5 J-3 L-1  
N-5 M-3

# Sec. 18 Twp. 27 N., R. 29 W., P.M.M.



- (1) B.L.M. B.C. 4 B.T.s
- (2) Corner destroyed position computed. Not set.
- (3) Set a 5/8" X 24" capped steel pin (stamped J.H.N. 4661S) from which a 36" Fir bears S 75° W 36.6 feet scribed S 1/16 S 18 B.T. and posted.
- (4) Set B.C. recordation filed seperately.
- (5) Set a 5/8" X 24" capped steel pin (stamped J.H.N. 4661S) from which a 20" Larch bears S 56° W 7.1 feet scribed E 1/16 S 18 B.T. and posted.
- (6) B.L.M. B.C. 3 B.T.s
- (7) Set a 5/8" X 24" capped steel pin (Stamped J.H.N. 4661S) from which a 12" Fir bears N 30° E 10.9 feet scribed CS 1/16 S 18 B.T. and posted.
- (8) B.L.M. B.C. 2 B.T.S
- (9) B.L.M. B.C. 2 B.T.s

