

INSTRUCTIONS

1. Original and/or subsequent record used to evaluate the corner position.
2. Description of evidence found, note discrepancies in the record, state method of establishing lost or obliterated corners.
3. Description of monument and accessories set to perpetuate the corner position.
4. Sketch of corner, show all pertinent data which can best be shown in a sketch example, corner marking, topography ties, position of accessories, etc.
5. Certification must be signed and sealed by Land Surveyor registered in the State of Montana.
6. Fill in Cross Index & Section Diagram at bottom of sheet.

CERTIFIED CORNER RECORDATION

Corner CC S7 & S18 T. 27 N. R. 29 W. P.M.M. Lincoln County

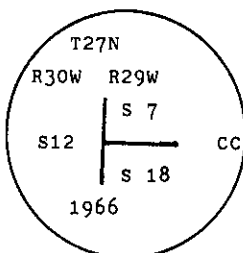
I. 1900 G.L.O. record by Burton S. Adams: Set a granite stone and four bearing trees.

1902 The Fractional Subdivision of T27N R29W by Burton S. Adams & W. C. Weeks: Intersect the west boundary of the Tp., 83 lks. north of the cor. of secs. 7, 12, 13 & 18, which now refers to secs. 12 & 13 only. Set a limestone 15x12x6 ins., 10 ins. in the ground, for the Closing Corner of secs. 7 & 18, marked C. C. on E., with 4 grooves on S. and 2 grooves on N. faces, from which:

- A pine, 15 ins. diam., bears N 39° 45' E, 85 lks., mkd. T27N R29W S 7 BT.
- A fir, 20 ins. diam., bears S 31° E, 102 lks. dist., mkd. T27N R29W S18 BT.

1966 BLM Remonumentation by Roy G. Leedy: The closing corner of secs. 7 & 18 monumented with a limestone, 16x10x4 ins., firmly set, mkd. with CC on the E. face, 4 notches on the S. and 2 on the N. edges, and witnessed by the remains of one of the original bearing trees.

At the corner point
Set an iron post, 30 ins. long, 2 1/2 ins. diam., 24 ins. in the ground, with brass cap mkd.:



From which the original bearing trees:

- A dead pine, 24 ins. diam., bears N 40 1/2° E, 85 lks. dist., mkd. CC T27N R29W S7 BT. (Record: N 39 3/4° E, 85 lks.)

The new bearing trees:

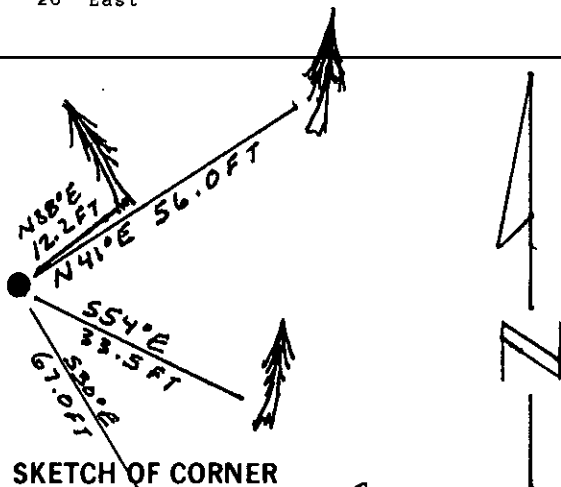
- A fir, 14 ins. diam., bears N 35° E, 18 lks. dist., mkd. CC T27N R29W S7 BT.
- A fir, 10 ins. diam., bears S 56° E, 50 lks. dist., mkd. CC T27N R29W S18 BT.

Bury the original stone alongside the iron pipe.

II. Found a 2 1/2 in. diam. iron pipe, 8 ins. above the ground, with 3 1/4 in. diam. BLM brass cap mkd. as shown above, from which:

- A pine, 26 ins. diam., bears N 41° E, 56.0 ft. dist., healed face.
- A down fir, 13 ins. diam., bears N 38° E, 12.2 ft. dist., mkd. T27N R29W S7 CC BT.
- A fir, 14 ins. diam., bears S 54° E, 33.5 ft. dist., healed face.
- A rotten tree bears S 30° E, 67.0 ft. dist.

III. Painted red bands around the bearing trees and attached Land Survey Monument and Bearing Tree signs.
Set a 6 ft. galvanized steel guard post with Land Survey Marker and Property Boundary decals, North, 3 ft.
Magnetic Declination: 20° East



SKETCH OF CORNER

CERTIFICATION

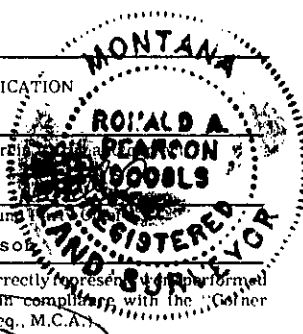
I, Kevin A. Todd
certify the information shown herein.

Kevin A. Todd
Signature Ground

I, Ronald A. Pearson
certify that this Corner Record correctly represents work performed by me or under my direction in compliance with the "Corner Recordation Act" (70-22-101, et seq., M.C.A.)

Ronald A. Pearson
Signature of Surveyor & Seal

Date: 10/26/92 Reg. No. 9008 LS
Employer: U.S. FOREST SERVICE



Office of Clerk and Recorder, County of Lincoln. This "corner record" was filed for record on Jan 11, 1993 was noted on the cross-index plat and is assigned page No. 5276, in book No. _____

Coral M. Cummings By OB
County Official

Sec. 18
