

INSTRUCTIONS

1. Original and/or subsequent record used to evaluate the corner position.
2. Description of evidence found, note discrepancies in the record, state method of establishing lost or obliterated corners.
3. Description of monument and accessories set to perpetuate the corner position.
4. Sketch of corner, show all pertinent data which can best be shown in a sketch example, corner marking, topography ties, position of accessories, etc.
5. Certification must be signed and sealed by Land Surveyor registered in the State of Montana.
6. Fill in Cross Index & Section Diagram at bottom of sheet.

CERTIFIED CORNER RECORDATION

Corner 1/4 of Secs. 21 & 28 T. 27 N. R. 29 W. P.M.M. Lincoln County

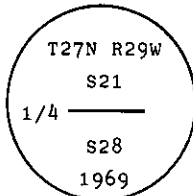
- I. 1902 G.L.O. Original Record by B. Adams & W. Weeks: Set a limestone monument and scribed a larch and a fir for bearing trees.

1969 B.L.M. Remonumentation Record by R. Leedy: "The 1/4 sec. cor. of secs. 21 and 28, as determined from the remains of the original bearing trees:

- A stump, bears N68 3/4° E, 24 lks. dist., with fallen log mkd. 1/4 S21 BT, lying alongside.
A snag, bears S23 1/4° W, 19 lks. dist., mkd. 1/4 S28 BT.

At the corner point

Set an iron post, 30 ins. long, 2 1/2 ins. diam., 10 ins. in the ground, to bedrock, and in a mound of stone, 4 ft. diam., to top, with brass cap mkd.



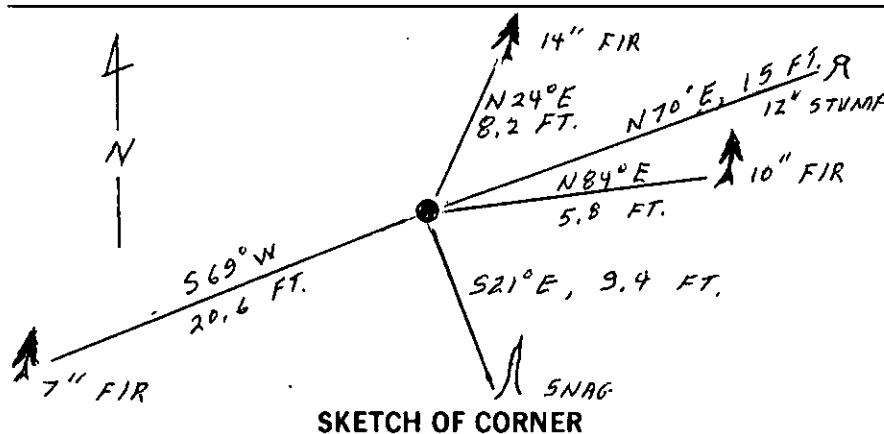
from which

- A fir, 8 ins. diam., bears N88 1/4° E, 9 lks. dist., mkd. 1/4 S21 BT.
A fir, 6 ins. diam., bears S19 1/4° E, 19 lks. dist., mkd. 1/4 S28 BT."

- II. Found a 2 1/2 in. diam. iron pipe, 5 ins. above a 3 ft. diam. mound of stone, with 3 1/4 in. diam. brass cap marked as shown,
from which

- A fir, 10 ins. diam., bears N84° E, 5.8 ft. (8.8 lks.) dist., scribe visible (BLM).
A 7 ft. fir snag, bears S21° E, 9.4 ft. (14.2 lks.) dist., scribe 1/4 S28 is visible (BLM).
A fir, 7 ins. diam., bears S69° W, 20.6 ft. dist., scribed 1/4 RM.
A rotten stump, 12 ins. diam., N70° E, 15 ft. dist., no scribing visible (Original).
A fir, 14 ins. diam., bears N24° E, 8.2 ft. dist., scribe overgrown.

- III. Painted red bands around the bearing trees and attached Land Survey Monument and Bearing Tree signs.
Set a 6 ft. galvanized steel guard post with Land Survey Marker and Property Boundary decals, West, 2.2 ft.



SKETCH OF CORNER

CERTIFICATION

- I, Gary Crismon
certify the information shown herein is true and correct.

Gary C. Crismon
Signature Ground Party Chief

- I, Alvah F. Hughes
certify that this Corner Record correctly reflects the corner as found by me or under my direction in compliance with the Montana Corner Recordation Act" (70-22-101, et seq.)

Alvah F. Hughes
Signature of Surveyor & Seal

Date: 4/10/90 Reg. No. 22138
Employer: U.S. FOREST SERVICE

Office of Clerk and Recorder, County of Lincoln. This "corner record" was filed for record on Aug 6, 1990 was noted on the cross-index plat and is assigned page No. 4260, in book No. Janet B. Sugil by Bill Buckhoff

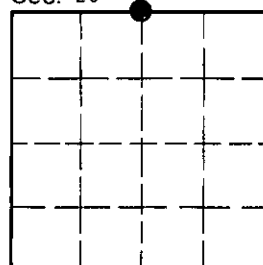
County Official

R-11

27 N 29 W

Cross Index No. T. R. P.M.M.

Sec. 28



• - corner this sheet