

INSTRUCTIONS

1. Original and/or subse^{ent} record used to evaluate the corner position.
2. Description of evidence found, note discrepancies in the record, state method of establishing lost or obliterated corners.
3. Description of monument and accessories set to perpetuate the corner position.
4. Sketch of corner, show all pertinent data which can best be shown in a sketch example, corner marking, topography ties, position of accessories, etc.
5. Certification must be signed and sealed by Land Surveyor registered in the State of Montana.
6. Fill in Cross Index & Section Diagram at bottom of sheet.

CERTIFIED CORNER RECORDATION

Corner NE Sec. Cor. 28 T. 27 N. R. 29 W. P.M.M. Lincoln County

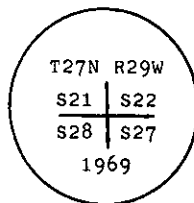
I. 1902 G.L.O. Original Record by B. Adams & W. Weeks: Set a limestone monument and scribed 2 larch and 2 fir trees for bearing trees.

1969 B.L.M. Remonumentation Record by R. Leedy: "The cor. of secs. 21, 22, 27, 28, monumented with a limestone, 16 x 10 x 6 ins., firmly set, mkd. 3 notches on the E., and 2 notches on the S. edges, and witnessed by the remains of one original bearing tree:

A burnt stump, bears S56°W, 9 lks. dist., with no visible mks.

At the corner point

Set an iron post, 30 ins. long, 2 1/2 ins. diam., 24 ins. in the ground, with brass cap mkd.



from which

A pine, 5 ins. diam., bears N6°E, 8 lks. dist., mkd. T27N R29W S22 BT.

A pine, 6 ins. diam., bears N76°W, 18 lks. dist., mkd. T27N R29W S21 BT."

Bury the original stone alongside and raise a collar of stone, 2 ft. diam., around the iron post."

II. Found a 2 1/2 in. diam. iron pipe, 9 ins. above ground, with 3 1/4 in. diam. brass cap marked as shown, from which

A LPP, 6 ins. diam., bears N16°E, 5.4 ft. dist., scribed T27N R29W S22 BT (BLM).

A LPP, 8 ins., diam., bears N50°E, 17.7 ft. dist., scribed S22 RM.

A LPP, 7 ins. diam., bears S64°E, 3.1 ft. dist., scribed S27 RM.

A rotten stump, 15 ins. diam., S42°W, 5.2 ft. dist., no scribing visible (Original).

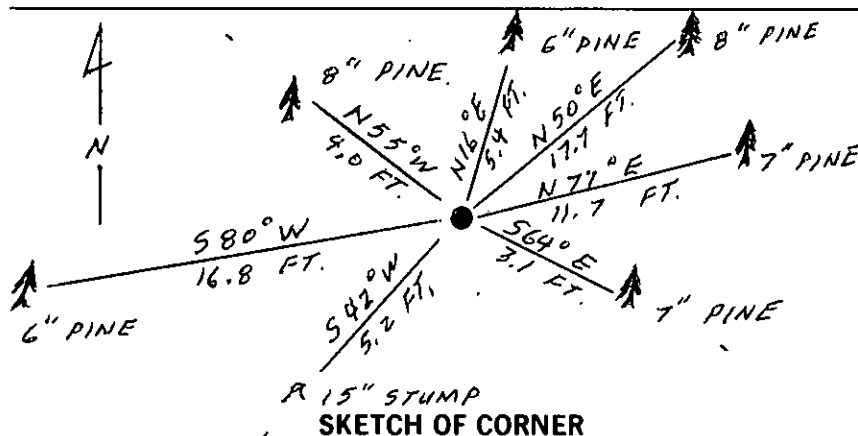
A LPP, 6 ins. diam., bears S80°W, 16.8 ft. dist., scribed S28 RM.

A LPP, 7 ins. diam., bears N77°E, 11.7 ft. dist., scribed T27N R29W S21 BT (BLM).

A LPP, 8 ins. diam., bears N55°W, 4.0 ft. dist., scribed S21 RM.

III. Painted red bands around the bearing trees and attached Land Survey Monument and Bearing Tree signs.

Set a 6 ft. galvanized steel guard post with Land Survey Marker and Property Boundary decals, West, 2.0 ft.



SKETCH OF CORNER

CERTIFICATION

1. Gary Crismon

certify the information shown herein is true and correct.

Gary Crismon
Signature Ground Party Chief

1. Alvah F. Hughes

certify that this Corner Record correctly represents his work performed by me or under my direction in compliance with the "Corner Recordation Act" (70-22-101, et seq., M.S.A.)

Alvah F. Hughes
Signature of Surveyor of State

Date: 4/10/90 Reg. No. 7322

Employer: U.S. FOREST SERVICE

U.S. FOREST SERVICE

Office of Clerk and Recorder, County of Lincoln. This "corner record" was filed for record on Aug 6, 1980 was noted on the cross-index plat and is assigned page No. 4259, in book No. _____

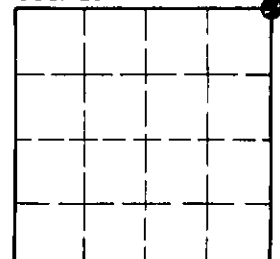
James H. Suppl. by Bill Bruck
County Official

R-13

27 N 29 W

Cross Index No. _____ T. _____ R. _____ P.M.M.

Sec. 28



• - corner this sheet