

INSTRUCTIONS

1. Original and/or subsequent record used to evaluate the corner position.
2. Description of evidence found, note discrepancies in the record, state method of establishing lost or obliterated corners.
3. Description of monument and accessories set to perpetuate the corner position.
4. Sketch of corner, show all pertinent data which can best be shown in a sketch example, corner marking, topography files, position of accessories, etc.
5. Certification must be signed and sealed by Registered Land Surveyor in State of Montana.
6. Fill in Cross Index & Section Diagram at bottom of sheet.

CERTIFIED CORNER RECORDATION

Corner W. 1/4 Cor. Section 32 T. 27N R. 29W P.M.M. Lincoln County

Original 1/4 Cor. was a spruce Post 3' long 6" square 24" in ground (Found and still standing, no marks visible)

Beaking Trees

A 8" Poplar Bears N 78° 50' E 18 Lks. (11.9 FT) Not Found

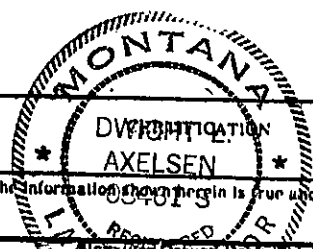
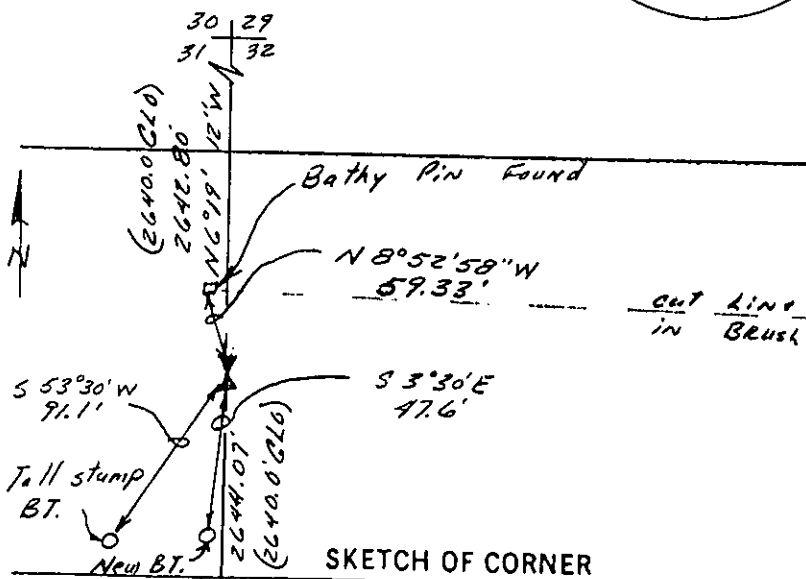
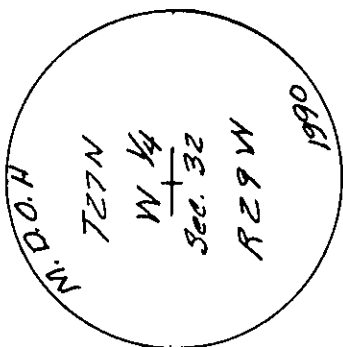
A pine 10" Dia. Bears S 53° 30' W 138 Lks (91.1 FT) Found, marks on BT. have been chop out can not read and tree is dead and broke off 10' above ground.

Found Bathy Pin set by Robert F. Burdick in 1959 and determined it to be in wrong location. Then found original 6" square Post Buried in brush and still standing.

Set a 2 1/2" Dia. Alum Cap on Alum Pipe in place of 1/4 Cor. Post set in concrete.

New Beaking Tree a 14" Dia Fir Bears S 3° 30' E, 47.6 FT

A 36" yellow Pine Bears N 2° 00' W, 59.0 FT From Bathy Pin



I, Dwight S. Axelsen certify that the information shown herein is true and correct.

I, Dwight S. Axelsen certify that this Corner Record correctly represents work performed by me or under my direction in compliance with the "Corner Recordation Act" (70-23-101, et seq., M.D.A.)

Signature of Surveyor & Seal: Dwight S. Axelsen

Date: 7-90 Reg. No. 8641 LS

Employer: Delta Engr.

Office of Clerk and Recorder, County of Lincoln. This "corner record" was filed for record on the July 11 day of 1990 was noted on the cross-index plat and is assigned page No. 4258, in book No. _____

Robert F. Burdick
County Official

