

INSTRUCTIONS

1. Original and/or subsequent record used to evaluate the corner position.
2. Description of evidence found, note discrepancies in the record, state method of establishing lost or obliterated corners.
3. Description of monument and accessories set to perpetuate the corner position.
4. Sketch or corner, show all pertinent data which can best be shown in a sketch example, corner marking, topography ties, position of accessories, etc.
5. Certification must be signed and sealed by Registered Land Surveyor in State of Montana.
6. Fill in Cross Index & Section Diagram at bottom of sheet.

CERTIFIED CORNER RECORDATION

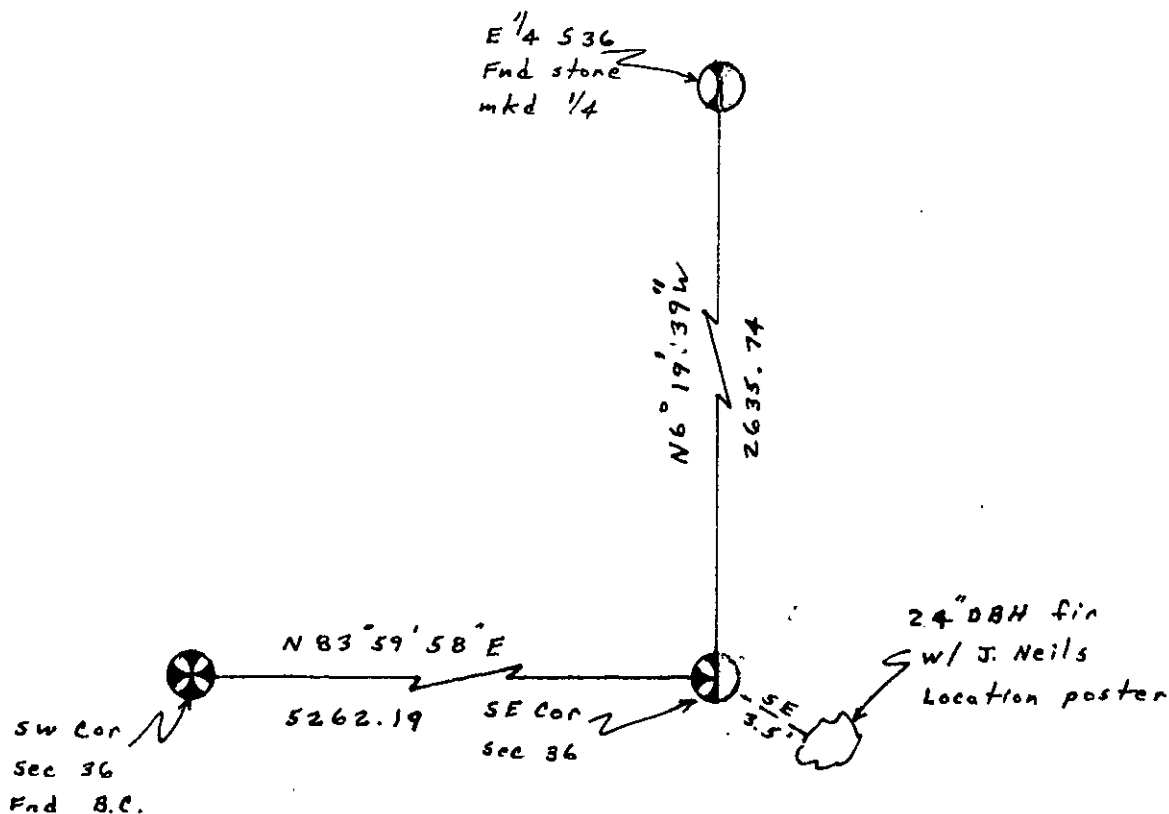
Corner SE Cor S36 T. 27N R. 29W P.M.M. Lincoln County

I. 1902 GLO Records by Adams and Weeks - set a limestone 15x12x5 ins, 10 ins in the ground for cor of Tps 26 and 27N, R29W on W. bdy of T27N, R28W, mkd with 6 notches on N and W edges from which:

a fir, 8 ins diam, bears S9°30'W, 22 lks
a fir, 8 ins diam, bears N69°30'W, 17 lks

II. Found a limestone firmly set with top one-fourth of stone sheared off. Rough dimensions of remains are 8"x8"x6" up with 6 notches on W, E and S edges which differs from original record. No clear evidence of original BT's remains.

III. See sketch for additional ties and accessories.



CERTIFICATION

I. Steven B. Ivey, 9329LS

certify the information shown herein is true and correct.

Steven B. Ivey
Signature Ground Party Chief

I. Dwight L. Axelsen

certify that this Corner Record correctly represents work performed by me or under by direction in compliance with the "Corner Recordation Act" (70-22-101, et seq., M.D.A.)

Dwight L. Axelsen
Signature of Surveyor & Seal

Date: Nov. 89 Reg. No. 8641LS

Employer: Delta Engineering

SKETCH OF CORNER

Office of Clerk and Recorder, County of Lincoln. This "corner record" was filed for record on the Dec 1 day of 1989 was noted on the cross-index plat and is assigned page No. 4110 in book No. _____

Janet B. Sugil by Bill Sugil
County Official

Sec. 36		SE Cor	

Cross Index No. _____ T. _____ R. _____ P.M.M.

• corner this sheet