

## INSTRUCTIONS

1. Original and/or subsequent record used to evaluate the corner position.
2. Description of evidence found, note discrepancies in the record, state method of establishing lost or obliterated corners.
3. Description of monument and accessories set to perpetuate the corner position.
4. Sketch of corner, show all pertinent data which can best be shown in a sketch example, corner marking, topography lies, position of accessories, etc.
5. Certification must be signed and sealed by Registered Land Surveyor in State of Montana.
6. Fill in Cross Index & Section Diagram at bottom of sheet.

## CERTIFIED CORNER RECORDATION

Corner 1/4 Secs. 33 and 34 T. 27N R. 29W P.M.M. Lincoln County

## Record 1902

Set a limestone 15x12x8 ins. 10 ins. in the ground, for 1/4 corner marked 1/4 on W. face; From which:

A fir, 6" dia., bears N46°E, 48 lks. dist. marked 1/4 S34 BT  
A fir, 4" dia., bears N21°W, 50 lks. dist. marked 1/4 S33 BT

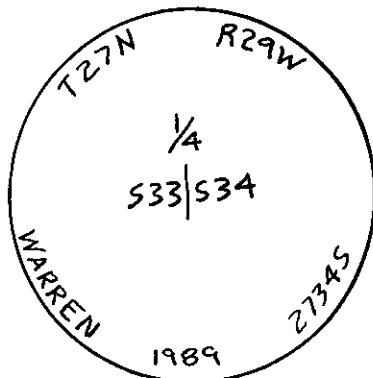
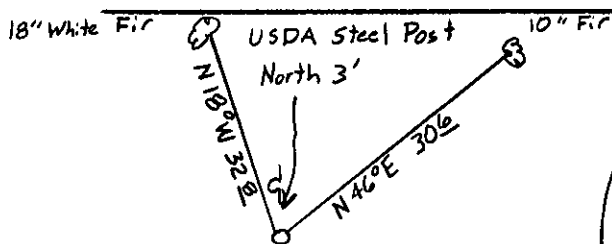
## FOUND

Original stone well set from which original BTs 10" fir bears N46°E 30.6' scribing overgrown (someone has started to chop out scribe), 18" white fir bears N18°W 32.8' scribing overgrown.

## SET

Set a standard Forest Service 3 1/2" aluminum cap on a aluminum pipe at the exact center of the base of the corner stone, which is now buried along the East side of the new monument.

MAINTAINED Original BTs painted red bands around BTs and attached required signs to BTs. A U.S.D.A. 6' steel post bears North 3'



CERTIFICATION

H. GENE WARREN

I, Dan Croft

certify the information shown herein is true and correct.

Signature Grounds Only

I, H. Gene Warren

certify that this Corner Record correctly represents work performed by me or under my direction in compliance with the "Corner Recordation Act" (70-22-101, et seq., M.D.A.)

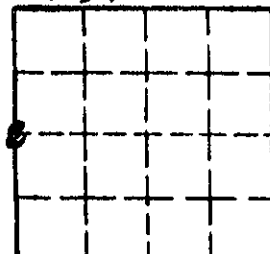
*H. Gene Warren*  
Signature of Surveyor & Seal

Date: 6/27/89 Reg. No. 27345Employer: Rocky Mt. Surveyors

## SKETCH OF CORNER

Office of Clerk and Recorder, County of Lincoln. This "corner record" was filed for record on the July 3 day of 1989 was noted on the cross-index plat and is assigned page No. 4060, in book No.         

Cross Index No. X-13 T. 27N R. 29W P.M.M.

Sec. 34

• corner this sheet