

INSTRUCTIONS

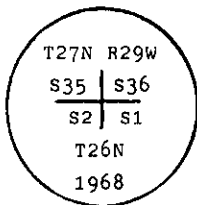
1. Original and/or subsequent record used to evaluate the corner position.
2. Description of evidence found, note discrepancies in the record, state method of establishing lost or obliterated corners.
3. Description of monument and accessories set to perpetuate the corner position.
4. Sketch of corner, show all pertinent data which can best be shown in a sketch example, corner marking, topography ties, position of accessories, etc.
5. Certification must be signed and sealed by Land Surveyor registered in the State of Montana.
6. Fill in Cross Index & Section Diagram at bottom of sheet.

CERTIFIED CORNER RECORDATION

Corner SE Sec. Cor. of Sec. 35 T. 27 N. R. 29 W. P.M.M. Lincoln County

I. Original in 1902, G.L.O. record by B. S. Adams and W. C. Weeks: Set a stone and four bearing trees.

Remonumentation in 1968, B.L.M. record by W. Damm Et Al: "The cor. of secs. 1, 2, 35 and 36, on the S. bdy. of the tp., monumented with a limestone, 18 x12.6 ins., loosely set, mkd. with 1 notch on the E. and 5 notches on the W. edges and witnessed by the remains of the original bearing trees. At the corner point, set an iron post, 30 ins. long, 2 1/2 ins. diam., 24 ins. in the ground, with brass cap mkd.



from which:

The original bearing trees:

- A stump, 20 ins. diam., bears N14° E, 27 lks. dist., mkd. T27N R29W S36 BT. (record)
- A stump, 12 ins. diam., bears S69 1/2° E, 32 lks. dist., mkd. T26N R29W S1 BT. (record)
- A stump, 12 ins. diam., bears S52 1/2° W, 40 lks. dist., mkd. with overgrown blaze. (record)
- A stump, 22 ins. diam., bears N52° W, 29 lks. dist., mkd. T27N R29W S35 BT. (record)

The new bearing trees:

- A fir, 13 ins. diam., bears N87° E, 156 lks. dist., mkd. T27N R29W S36 BT.
- A fir, 9 ins. diam., bears S33° E, 107 lks. dist., mkd. T26N R29W S1 BT.
- A fir, 12 ins. diam., bears S25° W, 206 lks. dist., mkd. T26N R29W S2 BT.
- A larch, 8 ins. diam., bears N52° W, 249 lks. dist., mkd. T27N R29W S35 BT.

Bury the original stone alongside the iron post."

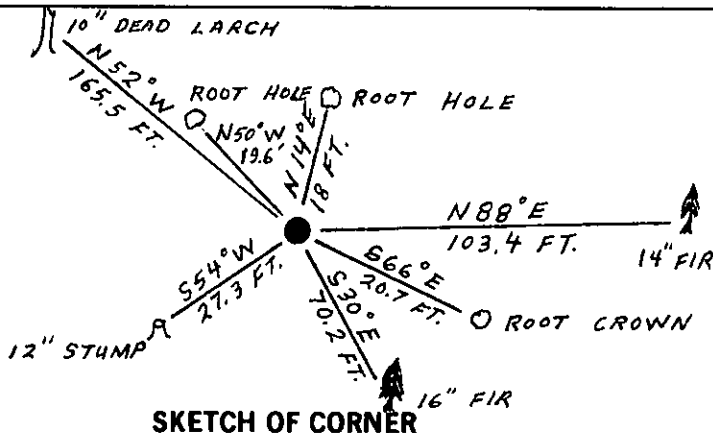
II. Found a 2 1/2 ins. diam. iron pipe, 7 ins. out of ground with 3 1/4 ins. diam., B.L.M., Brass cap marked as shown above, from which:

- A douglas fir, 14 ins. diam., bears N88° E, 103.4 ft. (156 lks.) dist., scribe visible.
- A douglas fir, 16 ins. diam., bears S30° E, 70.2 ft. (106 lks.) dist., healed scribe face.
- A larch (dead), 10 ins. diam., bears N52° W, 165.5 ft. (250 lks.) dist., visible scribe.
- Root hole, bears N14° E, 18 ft. (27 lks.) dist.
- Root crown, bears S66° E, 20.7 ft. (31 lks.) dist.
- Burnt stump, 12 in. diam. by 2 ft. high, bears S54° W, 27.3 ft. (41 lks.) dist., no visible scribe.
- Root hole with burnt remains, bears N50° W, 19.6 ft. (30 lks.) dist., no visible scribe.

III. Unable to establish new bearing trees because of the Houghten Creek fire in area.

Painted a red band around each bearing tree and attached "Land Survey Monument" and "Bearing Tree" signs where needed.

Set a guard post with "Survey Marker" decal, 3 ft., West.



SKETCH OF CORNER

CERTIFICATION

I, Keith M. Smith, Registered Professional Engineer, State of Montana, certify the information shown herein is true and correct.

Keith M. Smith
Signature of Board Participant
SMITH

I, David S. Smith, Registered Professional Engineer, State of Montana, certify that this Corner Record correctly represents work performed by me or under my direction in compliance with the "Corner Recordation Act" of 1972, P.L.S. 564, M.C.L.

David S. Smith
Signature of Surveyor & Seal

Date: 8/11/88 Reg. No. 6296-S
Employer: U.S. FOREST SERVICE

Office of Clerk and Recorder, County of Lincoln. This "corner record" was filed for record on Oct 12, 1988 was noted on the cross-index plat and is assigned page No. 3935, in book No. _____

David B. Sugit by Bill Busch
County Official *Dep.*

Sec. 35

Cross Index No. Z-21 T. 27 N. R. 29 W P.M.M.

• - corner this sheet

**INSTRUCTIONS TO SURVEYORS FOR COMPLETION OF
CERTIFIED CORNER RECORDATION FORMS**

I. ORIGINAL AND/OR SUBSEQUENT RECORD:

This item should describe or quote those portions of the original or subsequent record which were used in evaluating the corner position. The original record will usually be the General Land Office field notes. Subsequent record can come from several sources: Previously filed corner records, maps and plats, private and public records, etc. Some of the subsequent record, even though not in the public record, but known to have validity by the surveyor, may be quoted and appropriately noted.

The record data helps support the reestablished corner position because it clearly shows what history the surveyor based his corner position on. In some cases, however, the record may be unknown or not pertinent. A statement to that effect should appear on the corner record.

II. DESCRIPTION OF EVIDENCE FOUND OR METHOD OF LOCATING CORNER POSITION:

This item will describe the original or subsequent record evidence found. If portions of the found evidence cannot be reconciled with the record, then the disregarded record should be noted, and, if possible, an opinion as to its cause narrated.

If no physical evidence of the original or subsequent monuments and accessories can be found, then the method used to reestablish the lost or obliterated corner (single proportion, fence intersection, parol evidence, terrain calls, centerline of road, etc.) shall be indicated.

III. DESCRIPTION OF MONUMENTS AND ACCESSORIES SET TO PERPETUATE THE CORNER POSITION:

This item should list all details about the corner and its location which will help exclusively identify the corner position; including size and type of monument, how marked if not shown in sketch, and distinguishing topographic calls which help locate the corner. In many cases, instructions on how to find the corner should be included.

References or ties to other corners are optional and may be drawn on the face or back of the corner record form, or references to Certificate of Survey may be made. Separate drawings may be attached to the corner form.

If state plane coordinate values for the corner position are shown, then the control upon which they are based should be indicated.

IV. SKETCH OF CORNER:

This item will usually show how a found or set corner is marked and may also show topography or accessory monuments found or set and their relation to the corner. There is no stipulated format; the sketch could be transcribed field note entries.

V. CERTIFICATION:

The name and signature of the ground party chief is optional.

The Surveyor who performed or directed the field work which is depicted on the "Certified Corner Record" shall sign and affix his seal in the Certification.

The employer blank is optional but useful in tracking down original field note data or adjacent record if, in the future, questions arise about the corner.

VI.

The Cross Index at the bottom of the page should be completed by the Surveyor. Only the single Township Index where the corner is filed shall be completed.

The lower righthand corner is a corner location diagram and should have the pertinent section filled in at the top and a closed circle indicating the appropriate corner position in the section filled in. This is intended to be an aid in searching the "Record" once it has been filed.