

Corner 1/4 COR S7
S18 T. 27 N. R. 29 W. P.M.M. LINCOLN County

I. 1902 Fractional Subdivision by Burton S. Adams and William C. Weeks: Set a limestone and two bearing trees:

A pine, 30 ins. diam., bears S74°E. 82 lks. dist., marked 1/4 S 18 BT.

A fir, 12 ins. diam., bears N40°W. 40 lks. dist., marked 1/4 S 7 BT.

1971 BLM Remonumentation by Joseph E. French: The 1/4 sec. cor. of secs. 7 and 18, monumented with a limestone, 15x12x8 ins., set 10 ins. in the ground, mkd. 1/4 on the N. face, from which the remains of the original bearing trees:

A matured pine, 30 ins. diam., bears S74°E. 82 lks. dist., marked 1/4 S 18 BT.

A stump hole, bears N40°W. 40 lks. dist., with a fallen log, mkd. 1/4 S 7 BT, lying alongside.

At the corner point, set an iron post, 30 ins. long, 2 1/2 ins. diam., 24 ins. in the ground, with brass cap mkd. (see below) From which new bearing trees:

A fir, 5 ins. diam., bears S47°E. 20 lks. dist., marked 1/4 S 18 BT.

A fir, 6 ins. diam., bears N46°W. 36 lks. dist., marked 1/4 S 7 BT.

bury the original stone alongside the iron post.

1980 Certified Corner Recordation by Jack H. Ninneman, MT Reg. No. 4661S: B.L.M. B.C. 3 B.T.S

II. Found: A 2 1/2" diam. iron pipe, firmly set, 6" above ground in a collar of stone, with a 3 1/4" diam. BLM brass cap marked as shown, from which:

A pine snag, 15 ins. diam., bears S74°E. 54.12 ft. dist., with a blazed face, no visible marks.

A 10 ft. high douglas fir snag, 9 ins. diam., bears N46°W. 23.7 ft. dist., with a healed face.

A 6 ft. galvanized steel post bears South, 4 ft. with Property Boundary and Land Survey Monument decals attached.

III. Establish 2 new bearing tree:

A douglas fir, 10 ins. diam., bears N72°E, 64.8 ft. dist., marked 1/4 S7 BT.

A douglas fir, 9 ins. diam., bears S48°E, 58.9 ft. dist., marked 1/4 S18 BT.

Painted the scribed faces red and 6 in. red bands around the bearing trees. Attached Land Survey Monument and Bearing Tree signs to bearing trees. Set a 6 ft. galvanized steel post bears East and South, 3 ft. with Property Boundary and Land Survey Monument decals attached.

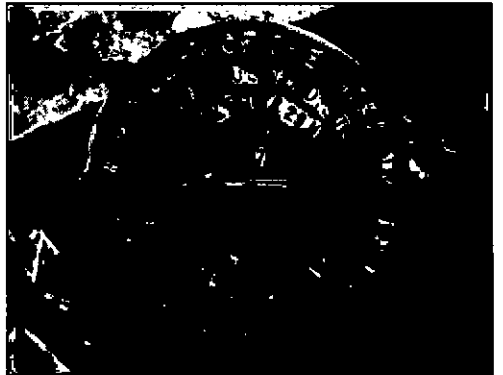
GEOGRAPHIC POSITION
LAT 48°06'39.5"N
LONG 115°23'12.4"W
WGS 84 REC. GRADE

Date of Fieldwork: 9/23/2013

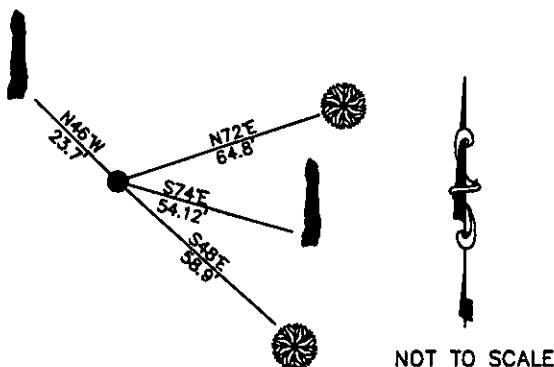
Survey crew: Tom Hommel

Magnetic declination: 14° East assumed

Equipment used: Hand compass and loggers tape



U.S. Forest Service, Supervisors Office, 31374 Hwy. 2, Libby, MT 59923 (406) 293-6211



CERTIFICATION MONTANA

I, Thomas M. Hommel, 10800LS

Signature of Ground Party Officer

Thomas M. Hommel, 10800LS

I, Thomas M. Hommel, certify that this Corner Record correctly represents the work performed by me or under my direction in compliance with the "Corner Recordation Act" (MCA 2-2-701 et seq.)

Signature of Surveyor & Seal

Date: 12/3/13 Reg. No. 10800LS

Employer: U. S. Forest Service

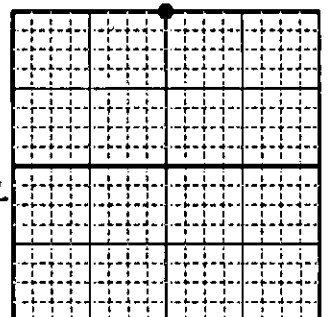
Office of Clerk and Recorder, County of Lincoln

248733 BOOK: CCR CC&R'S PAGE: 12093 Pages: 1
STATE OF MONTANA LINCOLN COUNTY
RECORDED: 12/03/2013 12:20 KOI: CC&R'S
TAMMY D. LAUER CLERK AND RECORDER
FEE: \$0.00 BY: Thomas M. Hommel
FOR: US FOREST SERVICE 31374 HWY 2, LIBBY, MONTANA 59923

Cross Index No. J 03 T. 27N. R. 29W. P.M., MT

Adopted July 1, 1981, Montana Board of Professional Engineers & Land Surveyors

Sec. 18

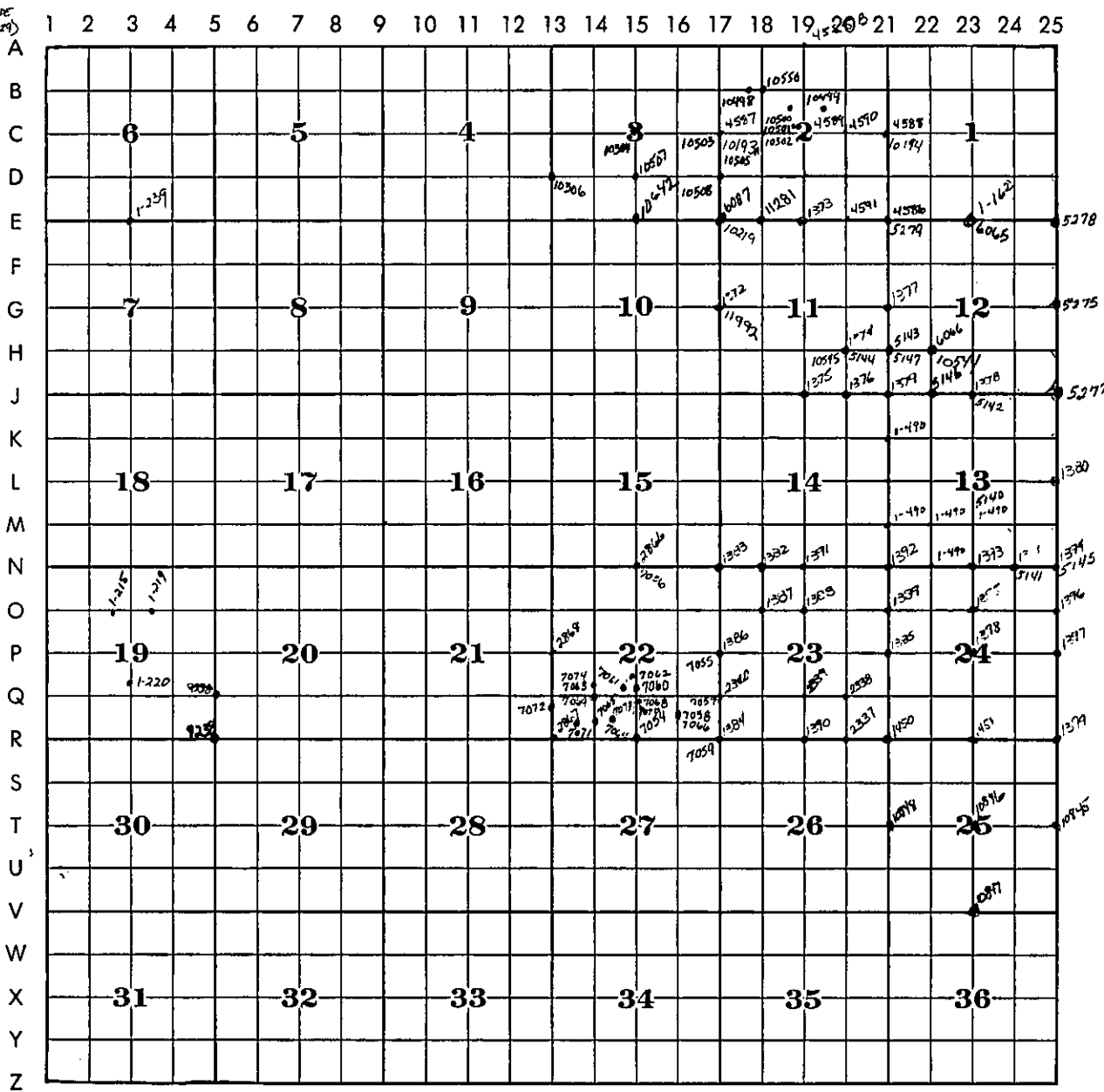


● corner this sheet

MS #10571, Corner #2 Morning Star Lake - CCR #9239 (Sec. 19)
 " " Corner #3 Northern Bell Lake - CCR #9240 (Sec. 19)
 " " Corner #1 Morning Star Lake - CCR #9241 (Sec. 19)
 " " Corner #4 Last Chance Lake - CCR #9242 (Sec. 19)
 " " Corner #3 Last Chance Lake - CCR #9243 (Sec. 19)
 " " Corner #4 Mountain Green Lake - CCR #9244 (Sec. 19)
 " " Corner #4 Northern Bell Lake - CCR #9245 (Sec. 19)
 " " Corner #3 Mountain Green Lake - CCR #9246 (Sec. 19)
 " " CCR #9237 (Sec. 20)

CROSS INDEX PLAT

T. 27 R. 30 MER.



LEGEND

- Corners filed under this cross index plat.
- ⊕ Certificates filed in adjoining township as indicated by solid quadrant(s).

Each corner certificate is identified by an alphabetical-numerical coordinate number which is derived from the system shown on the township diagram. For example, the quarter-corner between Section 5 and 6 is identified as Corner C-5.

Corners such as meander corners or subdivision corners which are not located at intersecting lines on the above diagram will be identified by reference to the nearest applicable coordinate lines, thus:
 AB-1; M-1-2; VW-19-20.

Corners common to adjoining townships will be identified by coordinates of the townships in which the certificates are to be filed.

Within each township record, the certificates will be filed in alphabetical-numerical sequence.

SEE
 PAGE 2
 Also

CROSS INDEX PLAT

T. 27 R. 30 MER.

	1	2	3	4	5	6	7	8	9	10	11	12	13	14	15	16	17	18	19	20	21	22	23	24	25
A																									
B																									
C			6				5				4				3				2				1		
D																									
E																									
F																									
G			7				8				9				10				11				12		
H																									
J																									
K																									
L			18				17				16				15				14				13		
M																									
N																									
O																									
P			19				20				21				22				23				24		
Q																									
R																									
S																									
T			30				29				28				27				26				25		
U																									
V																									
W																									
X			31				32				33				34				35				36		
Y																									
Z																									

LEGEND



Corners filed under this cross index plat.



Certificates filed in adjoining township as indicated by solid quadrant (s).

Each corner certificate is identified by an alphabetical-numerical coordinate number which is derived from the system shown on the township diagram. For example, the quarter-corner between Section 5 and 6 is identified as Corner C-5.

Corners such as meander corners or subdivision corners which are not located at intersecting lines on the above diagram will be identified by reference to the nearest applicable coordinate line, thus:
AB-1; M-1-2; VW-19-20.

Corners common to adjoining townships will be identified by coordinates of the townships in which the certificates are to be filed.

Within each township record, the certificates will be filed in alphabetical-numerical sequence.

T. 27 R. 30 MER.