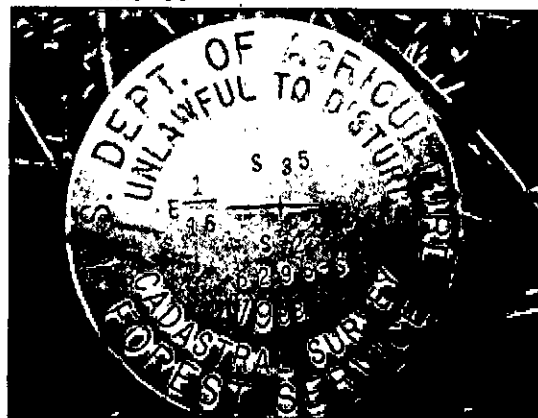


Corner E 1/16 $\frac{35}{2}$ T. 27 N. R. 29 W. P.M.M. LINCOLN County

- I. 1988 Certified Corner Recordation by Linda Smith, MT Reg. No. 6296S: No original record of corner. No evidence found in the field. At midpoint between 1/4 cor. of secs. 2 and 35 and sec. cor of secs. 1, 2, 35 and 36, set an aluminum rod, 3/4 ins. diam., 30 ins. long, 26 ins. in the ground with a 3 1/4 in. diam. aluminum, U.S.D.A., Forest Service cap marked as shown. (See below) No bearing trees available because of the Houghton Creek fire in the area. Set a guard post with "Land Survey Marker" and "Property Boundary" decal, 3 ft. East.
- II. Found, a 5/8 in. diam. aluminum rod with a 3 1/4 in. diam. aluminum cap firmly set in a collar of stone, 3 ins. above ground, with cap marked as shown below. Steel guard post with "Land Survey Marker" and "Property Boundary" decal, 3 ft. East.
- III. Establish 2 new bearing tree:
A pine, 6 ins. diam., bears S36°W, 21.4 ft. dist., mkd. E 1/16 S2 BT.
A pine, 5 ins. diam., bears N72°W, 20.0 ft. dist., mkd. "X" BT.

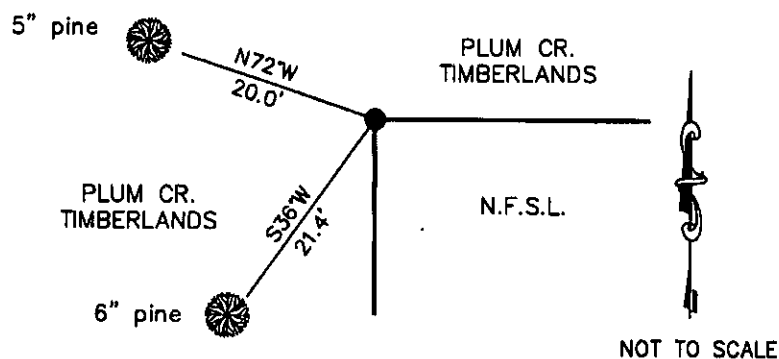
Painted the scribed faces red and 6 in. wide red bands around the bearing trees. Attached Land Survey Monument and Bearing Tree signs. Set a 6 ft. steel guard post South, 3 ft. with Land Survey Monument and Property Boundary decal attached.

LAT 48°03'10.80420"N
LONG 115°17'43.80956"W
NAD 83



Date of Fieldwork: 4/26/2011
Survey crew: Tom Hommel
Magnetic declination: 20° East assumed
Equipment used: Hand compass and loggers tape

U.S. Forest Service, Supervisors Office, 31374 Hwy. 2, Libby, MT 59923 (406) 293-6211



CERTIFICATION
I, Thomas Hommel, 9800LS
certify the information shown herein is true and correct.
MARC W. BURKHART
Signature of Surveyor
I, Marc Burkhardt, 9520LS
certify that this Corner Record correctly represents work performed by me. I am recording in compliance with the "Corner Recordation Act" (70-2201, 1st seq., M.C.A.)
Marc Burkhardt
Signature of Surveyor
Date: 2/7/2012 Reg. No. 9520LS
Employer: U. S. Forest Service

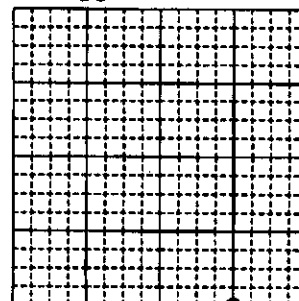
Office of Clerk and Recorder, County of Lincoln

237361 BOOK: CCR CC&R'S PAGE: 11946 Pages: 1
STATE OF MONTANA LINCOLN COUNTY
RECORDED: 02/22/2012 9:15 KOI: CC&R'S
TAMMY D. LAUER CLERK AND RECORDER
FEE: \$0.00 BY: Deanne Dennis
TO: FILED

Cross Index No. Z 20 T. 27N. R. 29W. P.M., MT

Adopted July 1, 1981, Montana Board of Professional Engineers & Land Surveyors

Sec. 35



● corner this sheet