

Corner  $\frac{35}{2} \frac{36}{1}$  T. 27 N. R. 29 W. P.M.M. LINCOLN County

- I. 1902 North & South boundaries of T27N, R29W by Burton S. Adams & William C. Weeks: Set a limestone, 18x12x6 ins., 12 ins. in the ground and 4 bearing trees.

1968 BLM Remonumentation by Woodrow F. Damm et. al. Found original stone loosely set and replaces stone with a iron post, 30 ins. long, 2 1/2 ins. diam., 24 ins. in the ground with brass cap marked as shown below. Found the stumps of the 4 original bearing trees. Establishes 4 new bearing trees.

1988 Certified Corner Recordation by Linda Smith, MT Reg. No. 6296S: Finds 3 of the BLM bearing trees and a mixture of stumps and remains of the original GLO bearing trees. Unable to set new bearing trees due to the recent Houghton Creek fire. Painted red bands around each found bearing tree and attached Land Survey Monument and Bearing Tree signs on the found bearing trees. Set a 6 ft. steel guard post with Survey Marker decal, 3 ft. West

- II. Found, a 2 1/2" diam. iron pipe, firmly set with a 3 1/4 in. diam. BLM brass cap, 7 ins. above ground, marked as shown below, from which:

A Douglas fir, 16 ins. diam., bears N88°E, 103.4 ft. dist., T27N visible.  
A Douglas fir, 20 ins. diam., bears S30°E, 70.2 ft. dist., mkd. with a healed face.  
A burnt decayed stump, bears S54°W, 27.3 ft. dist., with no visible scribing.  
A 6 ft. steel guard post with Survey Marker decal, 3 ft. West

- III. Establish 1 new bearing tree:

A pine, 8 ins. diam., bears S16°W, 37.2 ft. dist., mkd. T26N R29W S2 BT.

Painted the scribed faces red and 6 in wide red bands around the bearing trees. Attached Land Survey Monument and Bearing Tree signs. Set a 6 ft. steel guard post South, 3 ft. with Land Survey Monument and Property Boundary decal attached.

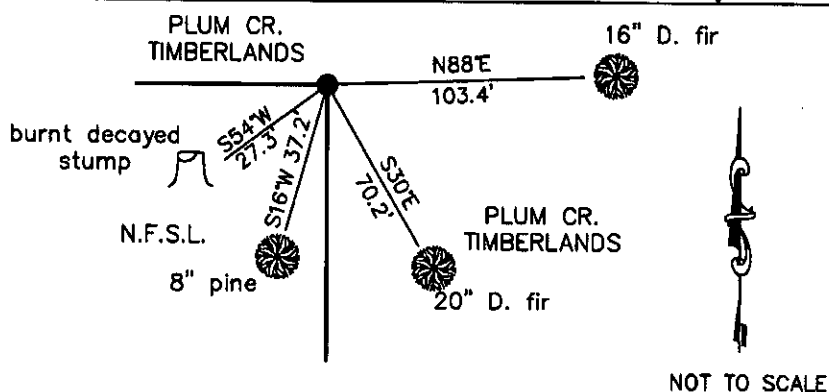
No trees available within reasonable distance for a bearing tree in the NW quadrant. This corner is located in the southerly edge of the power line right of way clearing.

LAT 48°03'10.77633"N  
LONG 115°17'24.39504"W  
NAD 83



Date of Fieldwork: 4/26/2011  
Survey crew: Tom Hommel  
Magnetic declination: 20° East assumed  
Equipment used: Hand compass and loggers tape

U.S. Forest Service, Supervisors Office, 31374 Hwy. 2, Libby, MT 59923 (406) 293-6211



CERTIFICATION  
I, Thomas W. Hommel, 0800LS  
certify that the information shown herein is true and correct.  
Signature of Party Chief  
★ Sign of Party Chief  
I, Marc Burkhardt, 9520LS  
certify that this Corner Record correctly represents work performed by me or under my direction in compliance with the "Corner Recordation Act" (70-10-101 et seq., M.C.A.)  
Signature of Surveyor Seal  
Date: 2/7/2012 Reg. No. 9520LS  
Employer: U. S. Forest Service

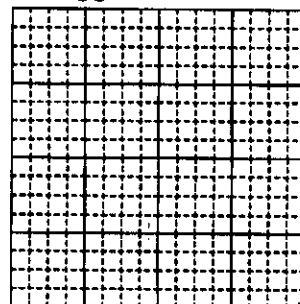
Office of Clerk and Recorder, County of Lincoln

237359 BOOK: CCR CC&R'S PAGE: 11944 Pages: 1  
STATE OF MONTANA LINCOLN COUNTY  
RECORDED: 02/22/2012 9:07 KOI: CC&R'S  
TAMMY D. LAUER CLERK AND RECORDER  
FEE: \$0.00 BY: *Jeannie Dennis*  
TO: FILED

Cross Index No. Z 21 T. 27N. R. 29W. P.M., MT

Adopted July 1, 1981, Montana Board of Professional Engineers & Land Surveyors

Sec. 35



● corner this sheet