

INSTRUCTIONS

1. Original and/or subsequent record used to evaluate the corner position.
2. Description of evidence found, note discrepancies in the record, state method of establishing lost or obliterated corners.
3. Description of monument and accessories set to perpetuate the corner position.
4. Sketch of corner, show all pertinent data which can best be shown in a sketch example, corner marking, topography ties, position of accessories, etc.
5. Certification must be signed and sealed by Land Surveyor registered in the State of Montana.
6. Fill in Cross Index & Section Diagram at bottom of sheet.

CERTIFIED CORNER RECORDATION

Corner SW COR Sec. 16 T. 27N R. 29W P.M.M. Lincoln County

GLO - 1902 - Burton Adams and William Weeks

Set a limestone 18x12x4 inches, 12 inches in the ground for corner of Sections 16, 17, 20, and 21 marked with 3 notches on south and 4 notches on east edges; from which:

- A fir, 12 inches diameter, bears N33°15'E, 76 links (50.16 feet) distant, marked T27N R29W S16 BT.
- A fir, 14 inches diameter, bears S43°E, 106 links (69.96 feet) distant, marked T27N R29W S21 BT.
- A fir, 8 inches diameter, bears S69°45'W, 41 links (27.06 feet) distant, marked T27N R29W S20 BT.
- A fir, 14 inches diameter, bears N19°30'W, 75 links (49.5 feet) distant, marked T27N R29W S17 BT.

BLM - 1969

The corner of Sections 16,17,20, and 21 monumented with a limestone, 18x12x4 inches, firmly set, marked with 4 notches on the east and 3 notches on the south edges and witnessed by the original bearing trees:

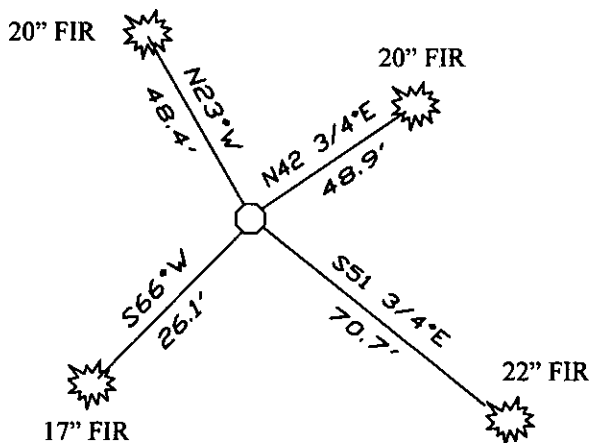
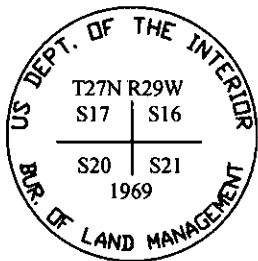
- A fir, 16 inches diameter, bears N43¼°E, 76 links (50.16 feet) distant, marked with an overgrown blaze (Record: S33¼°E).
- A fir, 16 inches diameter, bears S51°E, 106 links (69.96 feet) distant, marked with an overgrown blaze (Record: S43°E).
- A fir, 12 inches diameter, bears S69¼°W, 41 links (27.06 feet) distant, marked with an overgrown blaze.
- A fir, 16 inches diameter, bears N19½°W, 75 links (49.5 feet) distant, marked with an overgrown blaze.

At corner point, set an iron post, 30 inches long, 2½ inches diameter, 24 inches in the ground with brass cap marked as shown below.

FOUND:

Found a 3¼" BLM brass cap, marked as shown below, 0.3' above ground with a small rock cairn around base of monument; from which:

- A 20 inch Douglas fir, with visible scribing and bearing tree tag, bears N23°W, 48.38 feet distant.
- A 20 inch Douglas fir, with visible scribing, bears N42¾°E, 48.87 feet distant.
- A 15 inch fir, with visible scribing, bears S66°W, 26.08 feet distant.
- A 22 inch fir, with visible scribing, bears S51¾°E, 70.67 feet distant.



SKETCH OF CORNER

CERTIFICATION

I, Stephen Jeske
Certify the information shown herein is true, and complete.

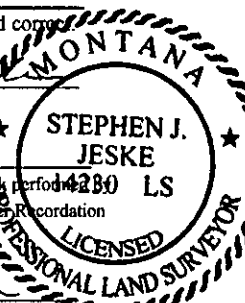
Stephen Jeske
Signature Ground Party Chief

I, Stephen Jeske
certify that this Corner Record correctly represents work performed by me or under my direction in compliance with the "Corner Recordation Act" (70-22-101, et seq., M.C.A.)

Stephen Jeske
Signature of Surveyor & Seal

Date: 7-15-2008 Reg. No. 14230

Employer: J.R.S. Surveying, Inc.



Office of Clerk and Recorder, County of _____ This "corner

record" was filed for record on _____ 213153 BOOK: CCR CC&R'S PAGE: 11255 Pages: 1

was noted on the cross-index plat and is RECORDED: 07/28/2008 12:20 KOI: CC&R'S

book no. _____ TAMMY D. LAUER CLERK AND RECORDER

FEE: \$0.00 BY *Francis Deane*
TO: J.R.S. SURVEYING P.O. BOX 1050, LIBBY, MONTANA 59923

	16		

Cross Index No. N9 T. 27N R. 29W PMM