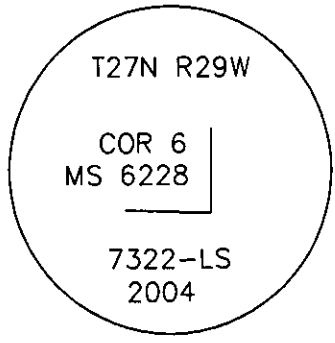


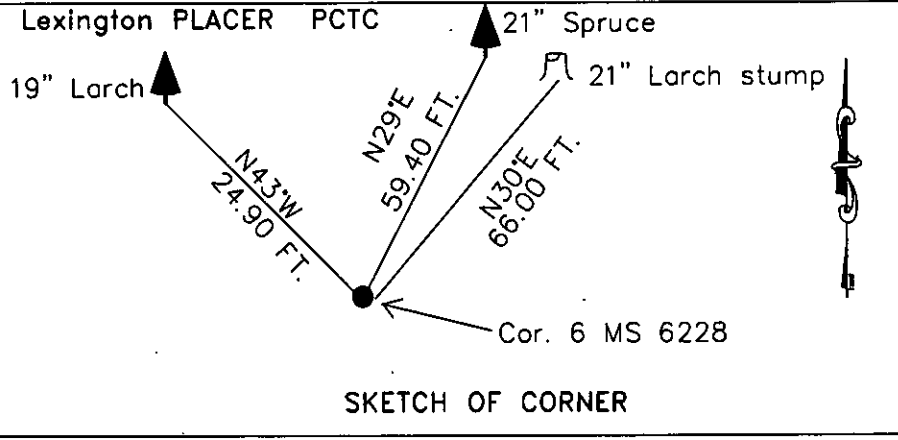
CERTIFIED CORNER RECORDATION

Corner Cor.6 MS 6228 T. 27 N. R. 29 W. P.M.M. LINCOLN County

- I. Record:** 1901 Mineral survey by Nimrod Jenkins: Set a post 4 1/2 ins. square, 4ft. long 2 ft. deep, from which:
- A blazed Spruce, 10 ins. diam., bears S87°30'W., 11.00 ft. dist., mkd. 6-6228 BT.
 - A blazed tamarack, 20 ins. diam., bears N30°E., 66.00 ft. dist., mkd. 6-6228 BT.
- II. Found:** A Tamarack stump, 21 ins. diam., bears N.30°E., 66.00 ft. dist. with visible scribing.
No evidence of wood post found.
- III. Perpetuation:** At the calculated position from survey and a distance and bearing tie from found original bearing tree remains, set a aluminum pipe 2 1/2 ins. diam. 30 ins. long 24 ins. in the ground, with a 3/4 in. diam. aluminum cap marked as shown below from which :
- A Spruce, 21 ins. diam., bears N29°E., 59.40 ft. dist., scribed 6 MS 6228 BT.
 - A Larch, 19 ins. diam., bears N43°W., 24.90 ft. dist., scribed 6 MS 6228 BT.
- Painted faces and 6 in. wide red bands around BT's and attached Bearing Tree and Land Survey Monument signs.
- Raise a collar of stone 2 ft. diam. around the set monument.
- Magnetic declination: 18' East
Equipment used: Hand compass and loggers tape



Kootenai Surveyors Inc., 314 California Av., Libby, MT. 59923 (406) 293-4354



CERTIFICATION

I, John Damon
certify the information shown herein is true and correct.
John Damon
Signature Ground Party Chief

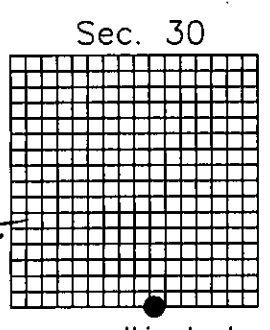
I, Alvah F. Hughes
certify that this Corner Record correctly represents work performed by me or under my direction in compliance with the "Corner Recordation Act" (70-22-101, et seq., M.C.A.)
Alvah F. Hughes
Signature of Surveyor & Recorder

Date: 6/21/2006 Reg. No. 7322-LS

Employer: Kootenai Surveyors Inc.

Office of Clerk and Recorder, County of Lincoln. This "corner record" was filed for record 195366 BOOK: CCR CC&R'S PAGE: 10942 Pages: 1

STATE OF MONTANA LINCOLN COUNTY
was noted on the cross-index RECORDED: 07/05/2006 4:25 KOI: CC&R'S
book No. _____ CORAL M. CUMMINGS CLERK AND RECORDER
FEE: \$0.00 BY: *Deputy*
TO: KOOTENAI SURVEYORS INC. P.O. BOX 393, LIBBY, MT 59923



Cross Index No. _____ T. 27N. R. 29W. P.M., MT

Adopted July 1, 1981, Montana Board of Professional Engineers & Land Surveyors

\\Menon\menon-shared\Corner Rec\ACAD-Edna MS.dwg, 8/30/2006 3:28:22 PM, Konica