

CERTIFIED CORNER RECORDATION

Corner Cor. 6 MS 6230 T 27N. R. 29 W. P.M.M. LINCOLN County  
Cor. 1 MS 6231

I. Record: 1901 Mineral survey by Nimrod Jenkins: Set a post 6 ins. square 4 ft. long 2 ft. deep, marked 6-6230 from which:

A blazed fir, 10 ins. diam., bears N.39°E., 14.00 ft. dist., marked 6-6230 BT.  
A blazed tamarack, 20 ins. diam., bears S27°W., 29.00 ft. dist., marked 6-6230 BT.

I Found :No evidence of original wood post found.

A Douglas fir stump, 26 ins. diam., bears N.39°E., 14.00 ft. dist., with visible scribing.  
A Larch stump, 24 ins. diam., bears S27°W., 29.00 ft. dist., with visible scribing.

III. Perpetuation:From the original bearing trees, a distance-distance tie , set a aluminum pipe 2 1/2 ins. diam., 30 ins. long 24 ins. in the ground, with a 3 1/4 in. diam. aluminum cap marked as shown below from which:

A Lodgepole pine, 8 ins. diam., bears N.74°E., 28.10 ft. dist., scribed 1 MS 6231 BT.  
A Alpine fir, 12 ins. diam., bears S.22°E., 25.90 ft. dist., scribed 6 MS 6230 BT.

Painted scribed faces red and 6 in. wide bands around the bearing trees and attached Bearing Tree and Land Survey Monument signs.

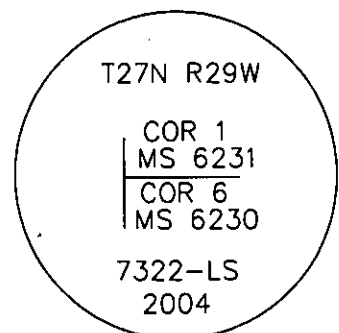
Raise a collar of stone 2 ft. diam. around the set monument.

Set a steel post 1 ft. N. of set corner.

Note: all measurements are from the face of discribed Bearing trees.

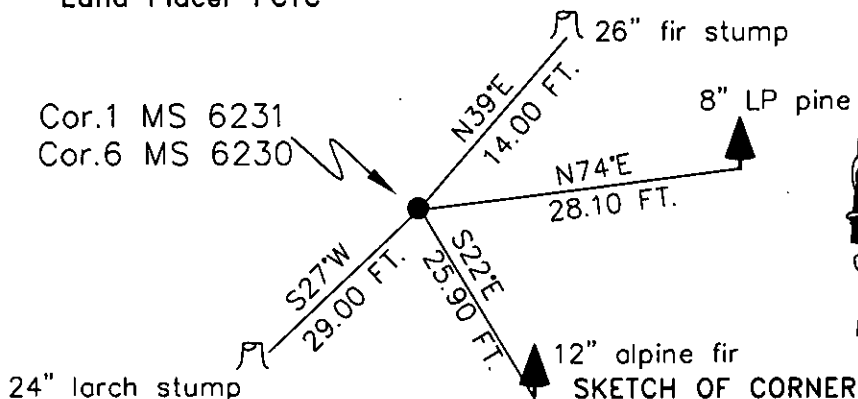
Magnetic declination: 18° East

Equipment used: Hand compass and loggers tape



Kootenai Surveyors Inc., 314 California Av., Libby, MT. 59923 (406) 293-4354

Edna Placer PCTC



CERTIFICATION

I, John Damon  
certify the information shown herein is true and correct.

Signature Ground Party Chief

I, Alvah F. Hughes  
certify that this Corner Record correctly represents work performed by me or under my direction in compliance with the "Corner Recordation Act" (70-22-101, et seq., M.C.A.)

Signature of Surveyor & Seal

Date: 6/21/2006 Reg. No. 7322-LS

Employer: Kootenai Surveyors Inc.

Office of Clerk and Recorder, County of Lincoln. This "corner

record" was filed for record c 195363 BOOK: CCR CC&R'S PAGE: 10939 Pages: 1

was noted on the cross-index STATE OF MONTANA LINCOLN COUNTY

book No. RECORDED: 07/05/2006 4:10 KOI: CC&R'S

CORAL M. CUMMINGS CLERK AND RECORDER

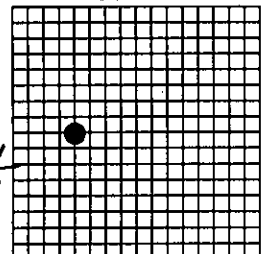
FEE: \$0.00 BY: Glennie Seamus

TO: KOOTENAI SURVEYORS INC. P.O. BOX 393, LIBBY, MT 59923

Cross Index No. T. 27N. R. 29W. P.M., MT

Adopted July 1, 1981, Montana Board of Professional Engineers & Land Surveyors

Sec. 30



• corner this sheet