

CERTIFIED CORNER RECORDATION

Corner Cor. 1 MS 6228 T. 27 N. R. 29 W. P.M.M. LINCOLN County

- I. Record: 1901 Mineral survey by Nimrod Jenkins: Set a stone 20x12x10 ins. 10 ins. in the ground, marked 1-6228 for cor. No. 1. Raise a mound of stone 4 ft. diam. 2 ft. high along side.
- II. Found: Found a slate stone 23x19x6 ins., loosely set 12 ins. in the ground with Lexington marked on the N. face.
- III. Perpetuation: At the found position, we reset the stone monument 14 ins. in the ground firmly set from which we establish 2 bearing trees described below:

A Douglas fir, 14 ins. diam., bears S.62°E., 23.90 ft. dist., scribed 1 MS 6228 BT.
A Douglas fir, 11 ins. diam., bears S.62°W., 47.10 ft. dist., scribed 1 MS 6228 BT.

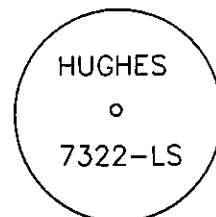
A 5/8 in. diam. rebar 24 ins. long 22 ins. in the ground bears S72°27'W., 81.00 ft. dist., with a 1 1/2 in. diam. P.V.C cap marked HUGHES 7322-LS.

A 5/8 in. diam. rebar 24 ins. long 22 ins. in the ground bears S17°33'E., 65.00 ft. dist., with a 1 1/2 in. diam. P.V.C cap marked HUGHES 7322-LS.

Painted scribed faces red and 6 in. wide bands around BT's and attached Bearing Tree and Land Survey Monument signs.

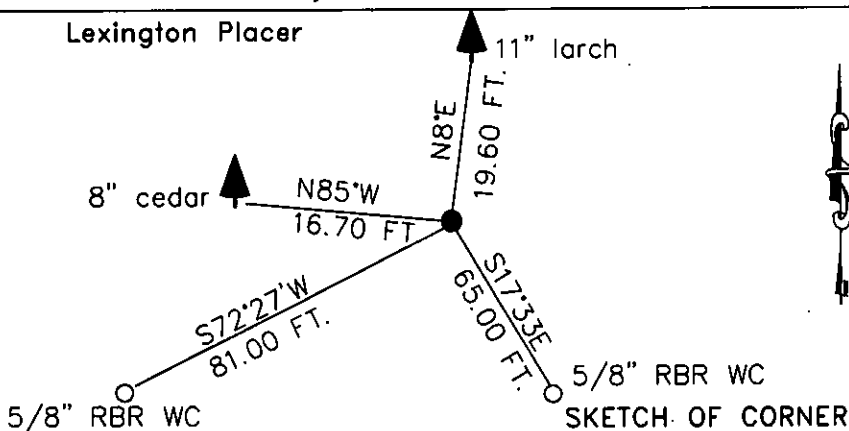
Magnetic declination: 18° East

Equipment used: Hand compass and loggers tape



Kootenai Surveyors Inc., 314 California Av., Libby, MT. 59923 (406) 293-4354

Lexington Placer



CERTIFICATION

I, John Damon certify the information shown herein is true and correct.

John Damon
Signature Ground Party Chief

I, Alvah F. Hughes certify that this Corner Record correctly represents work performed by me or under my direction in compliance with the "Corner Recordation Act" (70-22-101, et seq. MCA).

Alvah F. Hughes
Signature of Surveyor & Seal

Date: 6/21/2006 Reg. No. 7322-LS

Employer: Kootenai Surveyors Inc.

Office of Clerk and Recorder, County of Lincoln This "corner

record" was filed for record. 195362 BOOK: CCR CC&R'S PAGE: 10938 Pages: 1

was noted on the cross-index STATE OF MONTANA LINCOLN COUNTY

book No. RECORDED: 07/05/2006 4:05 KOI: CC&R'S

CORAL M. CUMMINGS CLERK AND RECORDER

FEE: \$0.00

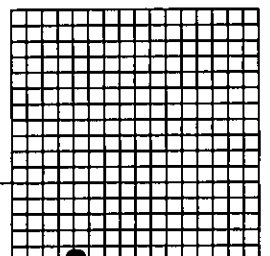
BY: [Signature]

TO: KOOTENAI SURVEYORS INC. P.O. BOX 393, LIBBY, MT 59923

Cross Index No. 27N. R. 29W. P.M., MT

Adopted July 1, 1981, Montana Board of Professional Engineers & Land Surveyors

Sec. 30



• corner this sheet