

CERTIFIED CORNER RECORDATION

Corner Cor. 3 MS 6231 T. 27 N. R. 29 W. P.M.M. LINCOLN County

I. Record: 1901 Mineral survey by Nimrod Jenkins: Set a post 4 1/2 ins. square 5 feet long, 2 feet deep marked 3-6231 for cor. No. 3.

A fir 14 ins. diam. bears S. 43°W. 37 ft. dist. marked 3-6231 BT.
A Tamarack 20 ins. diam. bears N. 74°W., 45 ft. dist. marked 3-6231 BT.

II. Found: No evidence of original wood post found.
A Larch snag 40 ins. diam. bears N. 74°W., 45 ft. dist. with visible scribing.

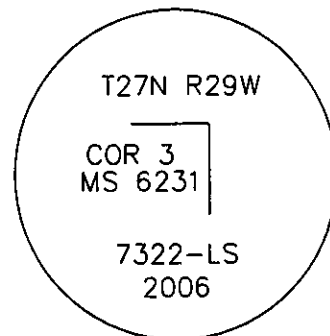
III. Perpetuation: At the corner point, determined by the original bearing tree remains, Set an Aluminum pipe 2 1/2 ins. diam., 30 ins. long, 24 ins. in the ground, with a 3 1/4 ins. diam. cap marked as shown below from which:

A Larch, 13 ins. diam., bears N. 44°W., 171.00 ft. dist., scribed 3 MS 6231 BT.
A Larch, 18 ins. diam., bears S. 41°W., 141.50 ft. dist., scribed 3 MS 6231 BT.

Painted scribed faces red and 6 in. wide bands around BT's and attached Bearing Tree and Land Survey Monument signs.

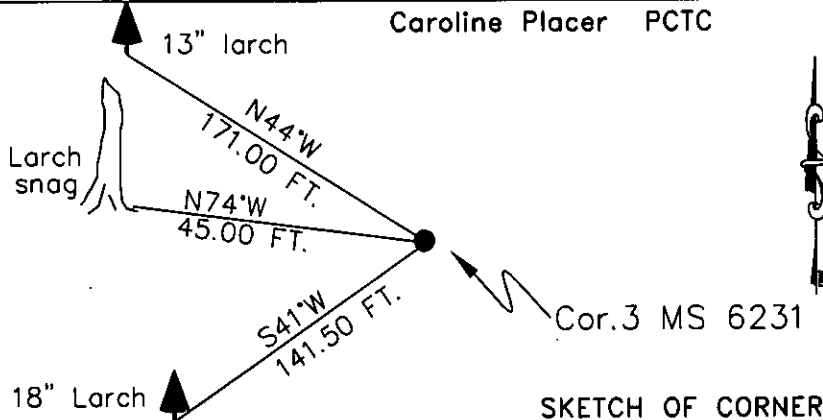
Magnetic declination: 18° East

Equipment used: Hand compass and loggers tape



Kootenai Surveyors Inc., 314 California Av., Libby, MT. 59923 (406) 293-4354

Caroline Placer PCTC



SKETCH OF CORNER

CERTIFICATION

Mike Tester
I, certify the information shown herein is true and correct.

[Signature]
Signature Ground Party Chief

Alvah F. Hughes
I certify that this Corner Record correctly represents work performed by me or under my direction in compliance with the "Corner Recordation Act" (70-22-101, et seq., M.C.A.)

[Signature]
Signature of Surveyor & Seal of ALVA F. HUGHES

Date: 6/21/2006 Reg. No. 52345 7322 LS

Employer: Kootenai Surveyors Inc.

Office of Clerk and Recorder, County of Lincoln. This "corner

record" was filed for recor 195359 BOOK: CCR CC&R'S PAGE: 10935 Pages: 1

was noted on the cross-i STATE OF MONTANA LINCOLN COUNTY

book No. RECORDED: 07/05/2006 3:50 KOI: CC&R'S

CORAL M. CUMMINGS CLERK AND RECORDER

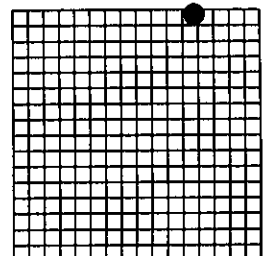
FEE: \$0.00

TO: KOOTENAI SURVEYORS INC. P.O. BOX 393, LIBBY, MT 59923

Cross Index No. T. 27N. R. 29W. P.M., MT

Adopted July 1, 1981, Montana Board of Professional Engineers & Land Surveyors

Sec. 30



• corner this sheet