

CERTIFIED CORNER RECORDATION

CORNER S 1/4 Cor. S 13 T. 27 N., R. 29 W., P.M.M. LINCOLN COUNTY

RECORD:

1911 original GLO notes by W. Perkins

"Set a shale stone 16 x 10 x 4 ins., 11 ins. in the ground, for 1/4 sec. cor., marked 1/4 on W. face; from which.

A Pine, 14 ins. in diam., bears S. 31° E., 30 lks, dist., marked 1/4 S 24 BT.

A Fir, 12 ins. in diam., bears N. 60° W, 43 lks, dist., marked 1/4 S 13 BT."

FOUND EVIDENCE:

Found original stone with (2) BT's

A Douglas Fir, 23 ins. diam., scribed T 27 N R 29 W S 13 BT bears N. 16° W., 24.1 ft. dist.

A Douglas Fir, 10 ins. diam., scribed T 27 N R 29 W S 24 BT bears S. 20° E., 43.8 ft. dist.

PERPETUATION:

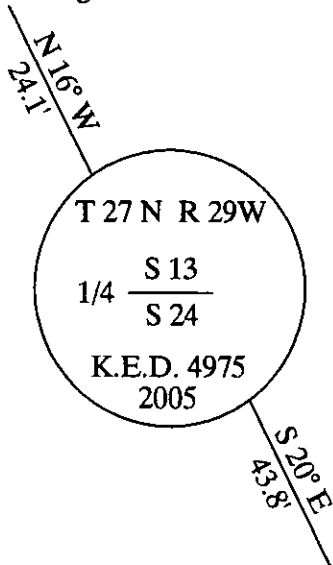
Replaced original stone with a 3 1/4 inch aluminum cap stamped (see diagram below) on a 5/8 inch dia. rebar 30 inches long. From which:

Found bearing trees were in good condition used them for bearing trees.

Painted 6 inch wide band with attached bearing tree signs to all trees.

MAGNETIC DECLINATION: 18° E

23" Douglas Fir



10" Douglas Fir

CERTIFICATION

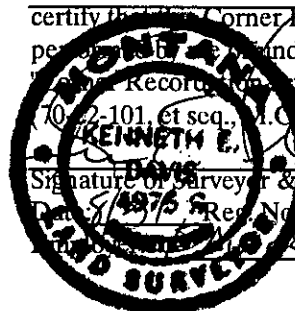
I, GEORGE CLARK

Certify the information shown herein is true and correct

Signature of Ground Party Chief

I, KENNETH E. DAVIS

certify that this Corner Record correctly represents work performed under my direction in compliance with the



SKETCH OF CORNER

SECTION

Office of Clerk and Recorder, County of _____

This "corner re 187825 BOOK: CCR CC&R'S PAGE: 10843 Pages: 1

was noted on t STATE OF MONTANA LINCOLN COUNTY

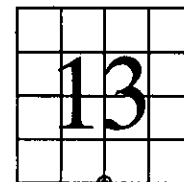
No. _____ RECORDED: 09/09/2005 9:35 KOI: CC&R'S

In book No. _____ CORAL M. CUMMINGS CLERK AND RECORDER

FEE: \$0.00

BY: Joanne Leary

TO: FILED



Cross Index No. _____ T. _____ N., R. _____ W., P.M.M.

THIS CORNER