

# CERTIFIED CORNER RECORDATION

CORNER W 1/4 Cor. S 13 T. 27 N., R. 29 W., P.M.M. LINCOLN COUNTY

## RECORD:

1911 original GLO notes by William K. Trippet

"Set a granite stone, 20 x 10 x 8 ins. in the ground, for 1/4 sec. cor., marked 1/4 on W. face; from which

A Fir, 12 ins. in diam., bears N. 89° E., 24 lks, dist., marked 1/4 S 13 BT.

A Fir, 12 ins. in diam., bears S. 44° W., 37 lks, dist., marked 1/4 S 14 BT."

## FOUND EVIDENCE:

Found original stone with (2) BT's

A Grand Fir, 8 ins. diam., scribed T 27 N R 29 W S 13 BT bears S. 34° E., 18.3 ft. dist.

A Douglas Fir, 12 ins. diam., scribed T 27 N R 29 W S 14 BT bears N. 86° W., 17.8 ft. dist.

## PERPETUATION:

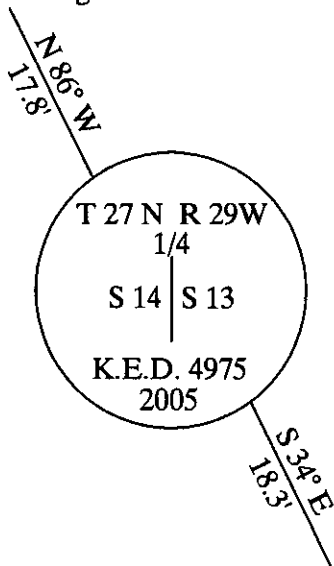
Replaced original stone with a 3 1/4 inch aluminum cap stamped (see diagram below) on a 5/8 inch dia. rebar 30 inches long. From which:

Found bearing trees were in good condition used them for bearing trees.

Painted 6 inch wide band with attached bearing tree signs to all trees.

## MAGNETIC DECLINATION: 18° E

12" Douglas Fir



8" Grand Fir

## CERTIFICATION

I, GEORGE CLARK

Certify the information shown herein is true and correct

Signature of Ground Party Chief

I, KENNETH E. DAVIS

certify that this record correctly represents work performed by me or under my direction in compliance with the

"Corner Recordation act

(70-2011, et seq.)

KENNETH E. DAVIS

Signature of Surveyor & Seal

Date: 09/09/2005 4975-S

Employee Surveying Inc

## SKETCH OF CORNER

## SECTION

Office of Clerk and Recorder, County of \_\_\_\_\_

This "corner 187824 BOOK: CCR CC&R'S PAGE: 10842 Pages: 1

was noted o STATE OF MONTANA LINCOLN COUNTY

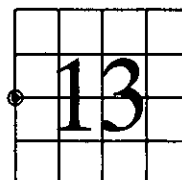
No. RECORDED: 09/09/2005 9:33 KOI: CC&R'S

In book No. CORAL M. CUMMINGS CLERK AND RECORDER

FEE: \$0.00

BY: George Clark

TO: FILED



Cross Index No. \_\_\_\_\_ T. \_\_\_\_\_ N., R. \_\_\_\_\_ W., P.M.M.

THIS CORNER