

CERTIFIED CORNER RECORDATION

Corner Cor.6 MS 6228 T 27 N. R. 29 W. P.M.M. LINCOLN County

I. Record: 1901 Mineral survey by Nimrod Jenkins: Set a post 4 1/2 ins. square, 4ft. long 2 ft. deep, from which:

A blazed Spruce, 10 ins. diam., bears S87°30'W., 11.00 ft. dist., mkd. 6-6228 BT.
A blazed tamarack, 20 ins. diam., bears N30°E., 66.00 ft. dist., mkd. 6-6228 BT.

II. Found: A Tamarack stump, 21 ins. diam., bears N.30°E., 66.00 ft. dist. with visible scribing.

III. Perpetuation: At the calculated position from survey and a distance and bearing tie from found original bearing tree remains, set a aluminum pipe 2 1/2 ins. diam. 30 ins. long 24 ins. in the ground, with a 3 1/4 in. diam. aluminum cap marked as shown below from which :

A Spruce, 21 ins. diam., bears N29°E., 59.40 ft. dist., scribed 6 MS 6228 BT.
A Larch, 19 ins. diam., bears N43°W., 24.90 ft. dist., scribed 6 MS 6228 BT.

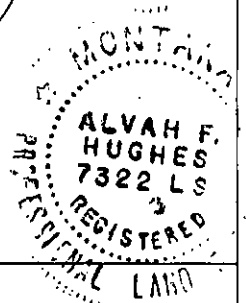
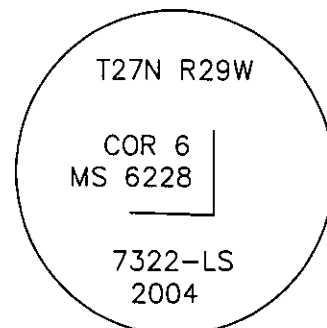
Painted faces and 6 in. wide red bands around BT's and attached Bearing Tree and Land Survey Monument signs.

Raise a collar of stone 2 ft. diam. around the set monument.

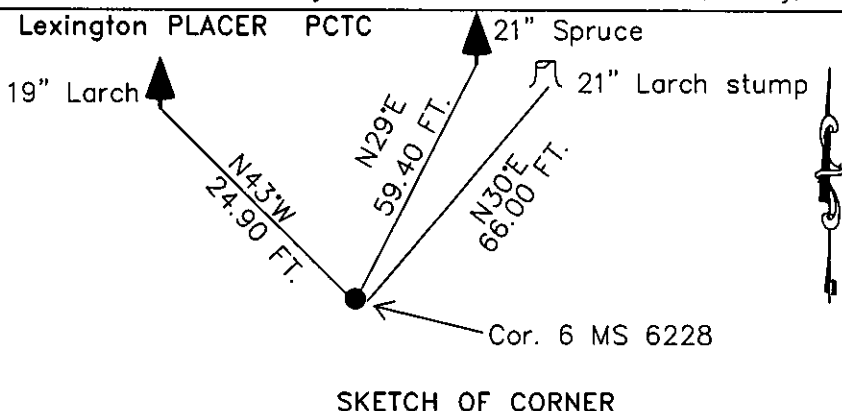
Magnetic declination: 18° East assumed

Equipment used: Hand compass and loggers tape

Note: all measurements are from the face of described Bearing trees.



Kootenai Surveyors Inc., 314 California Av., Libby, MT. 59923 (406) 293-4354



SKETCH OF CORNER

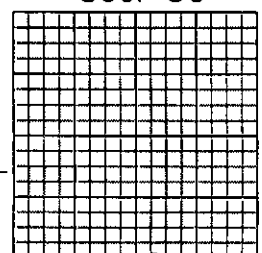
CERTIFICATION
I, John Damon
certify the information shown herein is true and correct.
John Damon
Signature Ground Party Chief
I, Alvah F. Hughes
certify that this Corner Record correctly represents work performed by me or under my direction in compliance with the "Corner Recordation Act" (70-22-101, et seq., M.C.A.)
Alvah F. Hughes 7322LS
Signature of Surveyor & Seal
Date: 12/9/2004 Reg. No. 7322-LS
Employer: Kootenai Surveyors Inc.

Office of Clerk and Recorder, County of Lincoln This "corner record" was filed 181354 BOOK: CCR CC&R'S PAGE: 10750 Pages: 1
was noted on the STATE OF MONTANA LINCOLN COUNTY
book No. RECORDED: 12/17/2004 9:35 KOI: CC&R'S
CORAL M. CUMMINGS CLERK AND RECORDER
FEE: \$0.00 BY: Joanni Alvarado
TO: FILED Deputy

Cross Index No. V T. 27N. R. 29W. P.M., MT

Adopted July 1, 1981, Montana Board of Professional Engineers & Land Surveyors

Sec. 30



• corner this sheet