

CERTIFIED CORNER RECORDATION

Corner Cor. 6 MS 6230 T. 27N. R. 29 W. P.M.M. LINCOLN County
Cor. 1 MS 6231

I. Record: 1901 Mineral survey by Nimrod Jenkins: Set a post 6 ins. square 4 ft. long 2 ft. deep, marked 6-6230 from which:

- A blazed fir, 10 ins. diam., bears N.39°E., 14.00 ft. dist., marked 6-6230 BT.
- A blazed tamarack, 20 ins. diam., bears S27°W., 29.00 ft. dist., marked 6-6230 BT.

I Found :

- A Douglas fir stump, 26 ins. diam., bears N.39°E., 14.00 ft. dist., with visible scribing.
- A Larch stump, 24 ins. diam., bears S27°W., 29.00 ft. dist., with visible scribing.

III. Perpetuation: At the position from survey, and distance distance tie from existing found bearing trees, set a aluminum pipe 2 1/2 ins. diam., 30 ins. long 24 ins. in the ground, with a 3 1/4 in. diam. aluminum cap marked as shown below from which:

- A Lodgepole pine, 8 ins. diam., bears N.74°E., 28.10 ft. dist., scribed 1 MS 6231 BT.
- A Alpine fir, 12 ins. diam., bears S.22°E., 25.90 ft. dist., scribed 6 MS 6230 BT.

Painted scribed faces red and 6 in. wide bands around the bearing trees and attached Bearing Tree and Land Survey Monument signs.

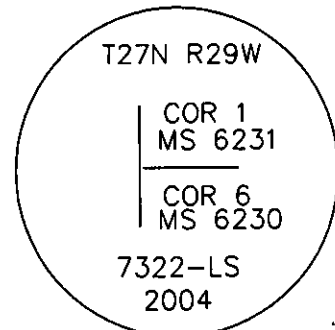
Raise a collar of stone 2 ft. diam. around the set monument.

Set a steel post 1 ft. N. of set corner.

Note: all measurements are from the face of discribed Bearing trees.

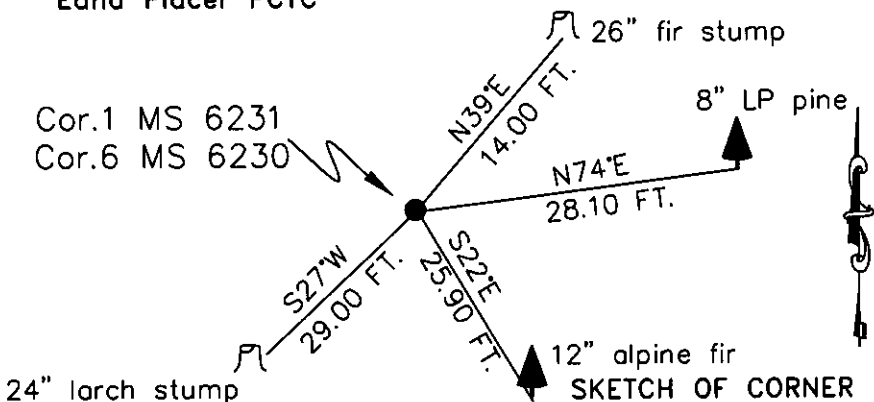
Magnetic declination: 18° East assumed

Equipment used: Hand compass and loggers tape



Kootenai Surveyors Inc., 314 California Av., Libby, MT. 59923 (406) 293-4354

Edna Placer PCTC



CERTIFICATION

I, Pete Landis
 certify the information shown herein is true and correct.
Pete Landis
 Signature Ground Party Chief

I, Alvah F. Hughes
 certify that this Corner Record correctly represents work performed by me or under my direction in compliance with the "Corner Recordation Act" (70-22-101, et seq., M.C.A.)
Alvah F. Hughes 7322-LS
 Signature of Surveyor & Seal

Date: 12/9/2004 Reg. No. 7322-LS
 Employer: Kootenai Surveyors Inc.

Office of Clerk and Recorder, County of Lincoln. This "corner

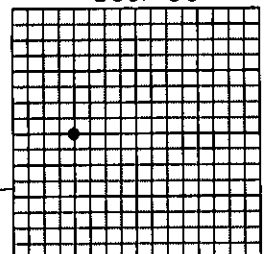
record" was filed for re
 was noted on the cross
 book No. _____

181352 BOOK: CCR CC&R'S PAGE: 10748 Pages: 1
 STATE OF MONTANA LINCOLN COUNTY
 RECORDED: 12/17/2004 9:33 KOI: CC&R'S
 CORAL M. CUMMINGS CLERK AND RECORDER
 FEE: \$0.00 BY: James M. Harris
 TO: FILED Deputy

Cross Index No. T2 T. 27N. R. 29W. P.M., MT

Adopted July 1, 1981, Montana Board of Professional Engineers & Land Surveyors

Sec. 30



• corner this sheet