

CERTIFIED CORNER RECORDATION

Corner Cor. 1 MS 6228 T 27 N. R. 29 W. P.M.M. LINCOLN County

I. Record: 1901 Mineral survey by Nimrod Jenkins: Set a stone 20x12x10 ins. 10 ins. in the ground, marked 1-6228 for cor. No. 1. Raise a mound of stone 4 ft. diam. 2 ft. high along side.

II. Found: Found a slate stone 23x19x6 ins., loosely set 12 ins. in the ground with Lexington marked on the N. face.

III. Perpetuation: At the found position, we reset the stone monument 14 ins. in the ground firmly set from which we establish 2 bearing trees described below:

A Douglas fir, 14 ins. diam., bears S.62°E., 23.90 ft. dist., scribed 1 MS 6228 BT.
A Douglas fir, 11 ins. diam., bears S.62°W., 47.10 ft. dist., scribed 1 MS 6228 BT.

Painted scribed faces red and 6 in. wide bands around BT's and attached Bearing Tree and Land Survey Monument signs.

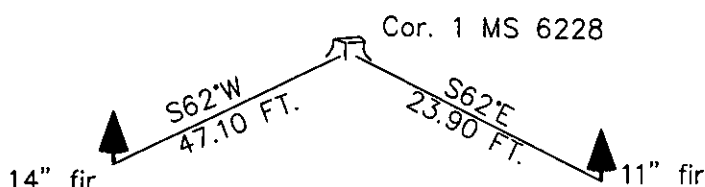
Magnetic declination: 18° East assumed

Equipment used: Hand compass and loggers tape

Note: all measurements are taken from the face of described Bearing trees.

Kootenai Surveyors Inc., 314 California Av., Libby, MT. 59923 (406) 293-4354

Lexington Placer PCTC



SKETCH OF CORNER

CERTIFICATION

I, Pete Landis
certify the information shown herein is true and correct.

Pete Landis
Signature Ground Party Chief

I, Alvah F. Hughes
certify that this Corner Record correctly represents work performed by me or under my direction in compliance with the "Corner Recordation Act" (70-22-101, et seq., M.C.A.)

Alvah F. Hughes
Signature of Surveyor & Seal

Date: 12/9/2004 Reg. No. 7322-LS

Employer: Kootenai Surveyors Inc.

Office of Clerk and Recorder, County of Lincoln This "corner

record" was filed for recor

was noted on the cross-ir

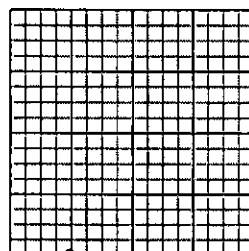
book No. _____

181351 BOOK: CCR CC&R'S PAGE: 10767 Pages: 1
STATE OF MONTANA LINCOLN COUNTY
RECORDED: 12/17/2004 9:32 KOI: CC&R'S
CORAL M. CUMMINGS CLERK AND RECORDER
FEE: \$0.00 BY: Coral M. Cummings
TO: FILED

Cross Index No. V2 T. 27N. R. 29W. P.M., MT

Adopted July 1, 1981, Montana Board of Professional Engineers & Land Surveyors

Sec. 30



• corner this sheet