

CERTIFIED CORNER RECORDATION

Corner N E Sec. Cor. S 13 T. 27 N., R. 29 W., P.M.M. Lincoln County

Record :

1903 original GLO notes by Burton S. Adams.

"A stone 12 x 8 x 5 ins. above ground, marked and witnessed as described by the surveyor general."

Found Evidence :

Found original stone.

Found original Bearing Trees, from which:

An alpine fir, 9 ins. diam., bears N. 82° W., 11.5 ft. dist.

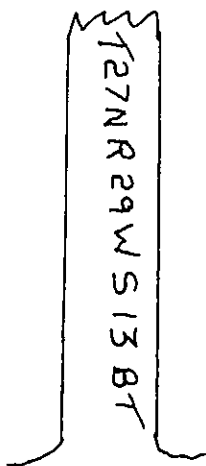
An alpine fir, 13.5 ins. diam., bears S. 51° W., 12.0 ft. dist. (dead).

Perpetuation :

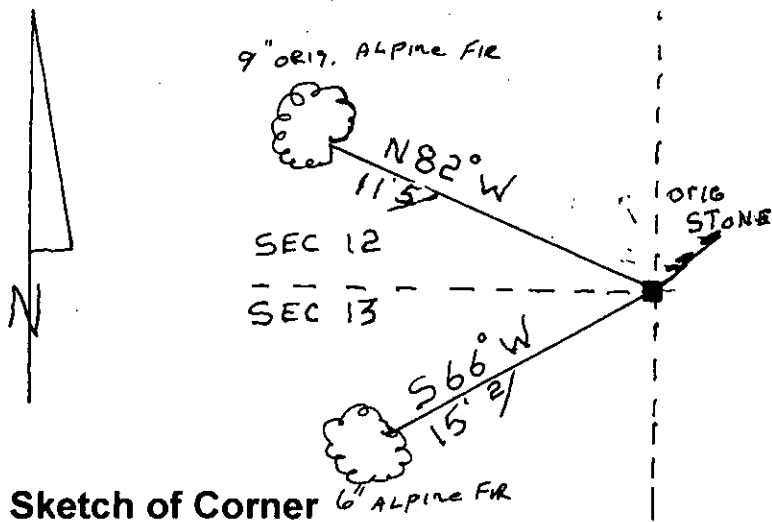
Established one (1) new Bearing Tree, from which:

An alpine fir, 6 ins. diam., bears S. 66° W., 15.2 ft. dist.

Painted 6 in. wide red bands around Bearing Tree with Bearing Tree and warning signs attached.



Declination: 17° E



Sketch of Corner

CERTIFICATION

I, Ricky E. Shaver

certify the information shown herein is true and correct

Ricky E. Shaver
Signature of Ground Party Chief

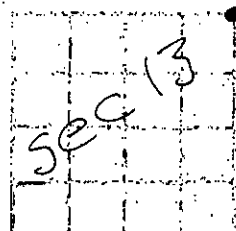
I, Ken E. Davis

certify that this Corner Record correctly represents work performed by Me or my direct employees in compliance with the "Corner Recordation Act"

Ken E. Davis
Signature of Surveyor & Seal

4975-S
Employer: Davis Surveying, Inc.

Section



Office of Clerk and Recorder, County of Lincoln
This "corner record" was filed for record on 2/28/2000
was noted on the cross-index plat and is assigned page No. 10435
in book No. Coral M. Cumming by DIB
County Official