

CERTIFIED CORNER RECORDATION

Corner W 1/4 Sec. 13 T. 27 N., R. 29 W., P.M.M. Lincoln County

Record :

1911 original GLO notes by William K. Trippet..

"Set a granite stone, 20 x 10 x 8 ins., 15 ins. in the ground, for 1/4 sec. cor., marked 1/4 on W. face; from which

A fir, 12 ins. in diam., bears N. 89° E., 24 lks. dist., marked 1/4 S 13 BT.

A fir, 12 ins. in diam., bears S. 44° W, 37 lks. dist., marked 1/4 S 14 BT."

Found Evidence :

Found original stone with 1/4 marked on W. face. Bearing Tree (one) was fallen down.

Perpetuation :

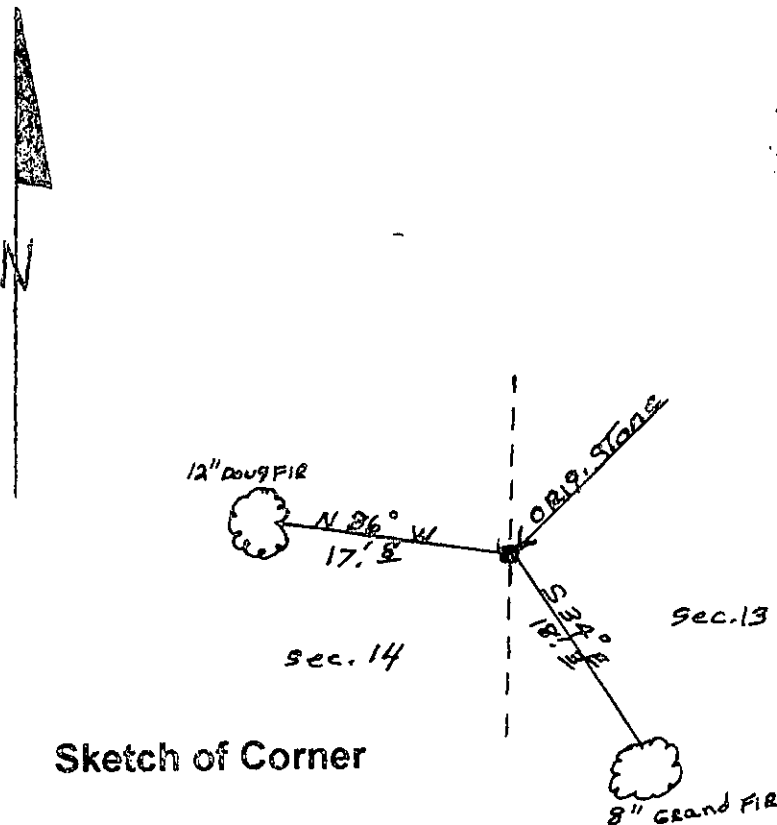
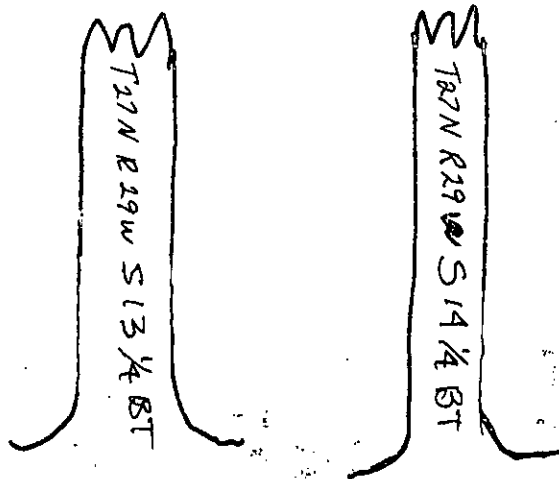
Established two (2) new Bearing Trees, from which:

A grand fir, 8 ins. in diam., bears S. 34° E., 18.3 ft. dist.

A douglas fir, 12 ins. in diam., bears N. 86° W., 17.8 ft. dist.

Painted 6 inch wide red bands around Bearing Trees and attached Bearing Tree tags and warning signs.

Declination: 17° E



Sketch of Corner

CERTIFICATION

I, Rick Shaver  
certify the information shown herein is true and correct  
Rick Shaver  
Signature of Ground Party Chief

I, Ken E. Davis  
certify that this Corner Record correctly represents work performed by  
Me or under my direction in compliance with the "Corner Recordation  
Act"  
(70-22-101, et seq. M.C.A.)  
KENNETH E. DAVIS  
Signature of Surveyor & Seal  
Date: 2/20/2010 Reg. No. 14975-5  
Employer: Davis Surveying, Inc.  
SURVEYOR

Section

Office of Clerk and Recorder, County of Lincoln  
This "corner record" was filed for record on 2/20/2010  
was noted on the cross-index plat and is assigned page No. 10432  
in book No. Coral M. Cummins' By RLB  
County Official

