

CERTIFIED CORNER RECORDATION

Corner N 1/4 Cor. Sec. 13 T. 27 N., R. 29 W., P.M.M. Lincoln County

Record :

1903 original GLO notes by William K. Trippet.

"Set a lime stone, 16 x 8 x 6 ins., 11 ins. in the ground, for 1/4 sec. cor., marked 1/4 on N. face; from which

A fir, 12 ins. in diam., bears S. 82° E., 58 lks. dist., marked 1/4 S 13 BT.

A Tamarack bears N 64° W, 13 lks. dist.

Found Evidence :

Found original stone as noted in original notes.

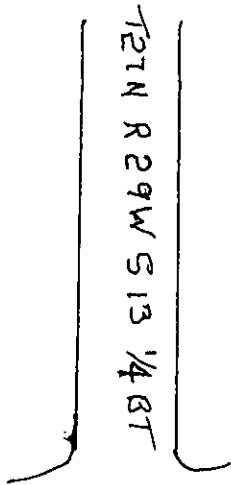
1 Larch Bearing Tree in good condition.

1 Douglas Fir Bearing Tree in poor condition.

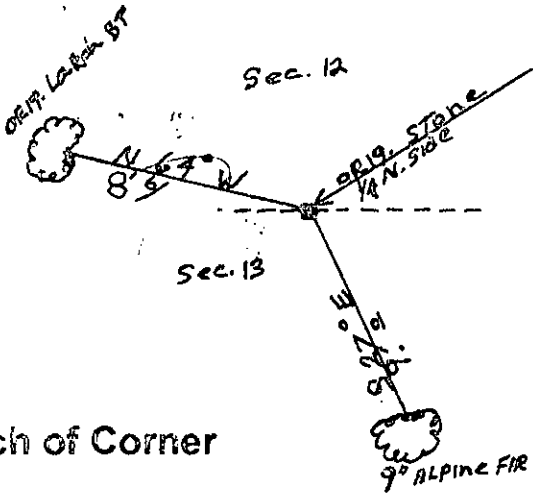
Perpetuation :

Original Larch Bearing Tree: Painted 6 inch red band around Bearing Tree and attached Bearing Tree and warning signs.

Set a 9 inch Alpine Fir Bearing Tree, which bears S 27° E, 9.00 ft. dist. Painted 6 inch red band around Bearing Tree and attached Bearing Tree and Land Survey Monument signs.



Declination: 17° East



Sketch of Corner

Office of Clerk and Recorder, County of Lincoln

This "corner record" was filed for record on 2/28/2000
was noted on the cross-index plat and is assigned page No. 10431

in book No. Coral M. Cumming By PUB
County Official

CERTIFICATION

I, Rick Shaver

certify the information shown herein is true and correct

Signature of Ground Party Chief

I, Kenneth E. Davis

certify that this Corner Record correctly represents work performed by
Me or under my direction in compliance with the "Corner Recordation

Act
70-22-101, et seq., M. & A.

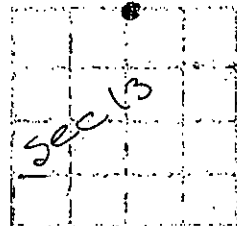
DAVIS

Signature of Surveyor & Seal

Date 7/23/54 RECEIVED Reg. No. 4975-S

Employer: Davis Surveying, Inc.

Section



Cross Index No. N 1/4 Cor. Sec. 13 T. 27 N., R. 29 W., PMM

● THIS CORNER