

CERTIFIED CORNER RECORDATION

Corner NW Sec. Cor. 13 T. 27 N., R. 29 W., P.M.M. Lincoln County

Record :

1903 original GLO notes by William K. Trippet.

"Set a shale stone, 20 x 12 x 4 ins., 15 ins. in the ground, for the cor. of secs. 11, 12, 13 and 14, marked with 1 notch on E., and 4 notches on S. edge; from which

- A tamarack, 14 ins. in diam., bears N. 62° E., 36 lks. dist., marked T 27 N R 29 W S 12 BT.
- A tamarack, 20 ins. in diam., bears S. 35° E., 20 lks. dist., marked T 27 N R 30 W S 13 BT.
- A tamarack, 18 ins. in diam., bears S. 28° W, 35 lks. dist., marked T 27 N R 29 W S 14 BT.
- A fir, 14 ins. in diam., bears N. 30° W, 30 lks. dist., marked T 27 N R 29 W S 11 BT."

Found Evidence :

Found original stone and three (3) BT's. Larch standing but dead, Sec. 12. Larch for Sec. 13 in good condition. Face grown over scribing not legible. Douglas fir for Sec. 11 no good.

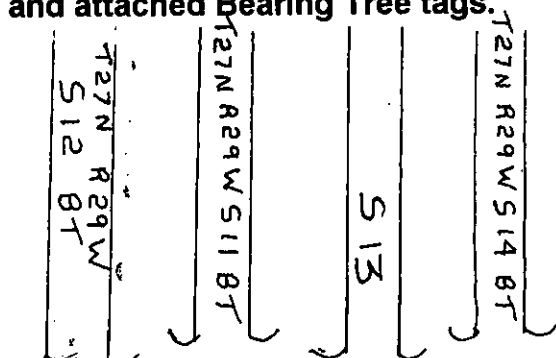
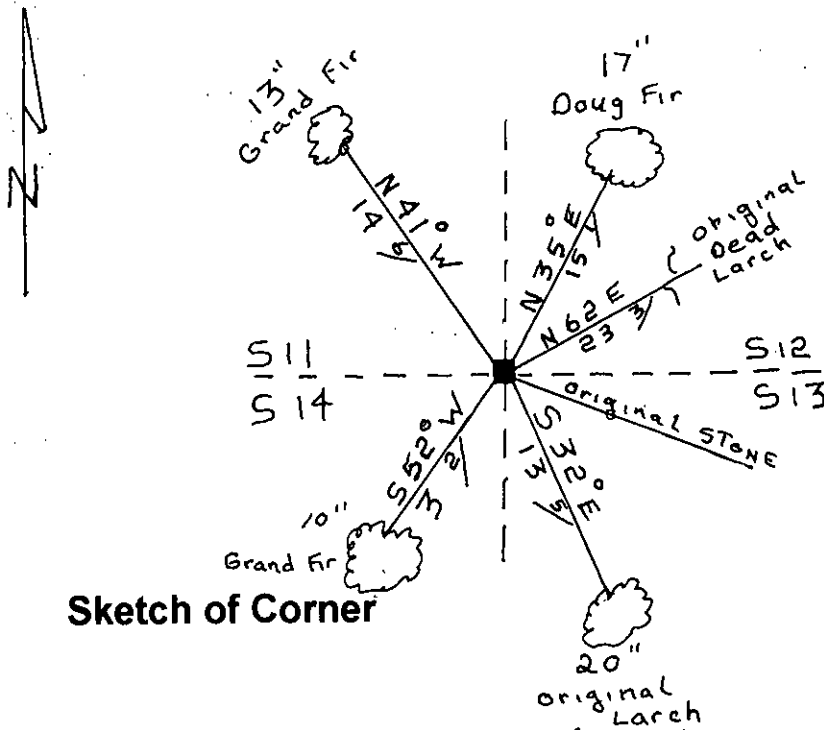
Perpetuation :

Established three (3) new Bearing Trees, from which:

- A grand fir, 13 ins. in diam., bears N. 41° W., 14.6 ft. dist., for Sec. 11.
- A grand fir, 10 ins. in diam., bears S. 52° W., 3.2 ft. dist., for Sec. 14.
- A douglas fir, 17 ins. in diam., bears N. 35° E., 15.1 ft. dist., for Sec. 12.

Painted 6 inch wide red bands around Bearing Trees and attached Bearing Tree tags.

Declination: 17°E



CERTIFICATION

I, Rick Shaver
 certify the information shown herein is true and correct
Rick Shaver
 Signature of Ground Party Chief

I, Ken E. Davis
 certify that this Corner Record correctly represents work performed by
 Mead & Davis Surveying, Inc. in compliance with the "Corner Recordation
 Act" (70-22-181 et seq., M.S.A.)
 Signature of Supervisor & Seal
Ken E. Davis
 MEAD & DAVIS SURVEYING, INC.
 4975-S

Office of Clerk and Recorder, County of Lincoln
 This "corner record" was filed for record on 2/28/2000
 was noted on the cross-index plat and is assigned page No. 10416
 in book No. Coral M. Cummings, RB

