

# CERTIFIED CORNER RECORDATION

Corner S 1/4 Sec. 13 T. 27 N., R. 29 W., P.M.M. Lin ln County

## Record:

1911 original GLO notes by W. Perkins.

"Set a shale stone, 16 x 10 x 4 ins., 11 ins. in the ground, for 1/4 se. cor., marked 1/4 on W. face; from which

A pine, 14 ins. in diam., bears S. 31° E., 30 lks, dist., marked 1/4 S 24 BT.

A fir, 12 ins. in diam., bears N. 60° W, 43 lks. dist., marked 1/4 S 13 BT."

## Found Evidence:

Found original stone with 1/4 marked on W. face and one douglas fir Bearing Tree in good condition with face grown over Sc. being not visible.

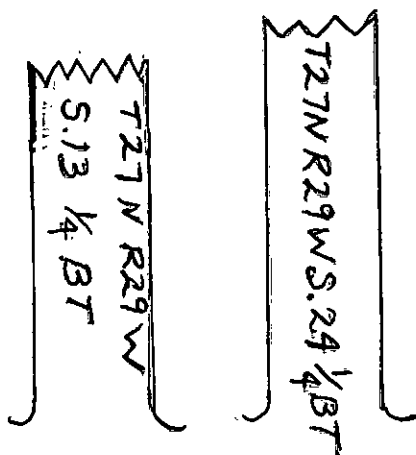
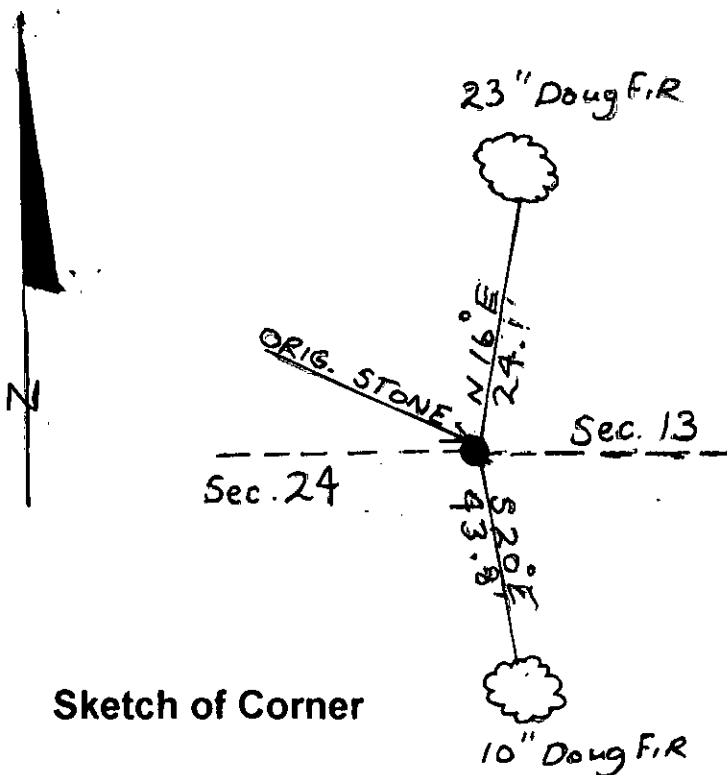
## Perpetuation:

A douglas fir, 23 ins. in diam., bears N. 16° W., 24.1 ft. dist.

A douglas fir, 10 ins. in diam., bears S. 20° E., 43.8 ft. dist.

Painted 6 inch wide red bands around Bearing Trees and attached Bearing Tree tags and warning signs.

Declination: 17° E



## CERTIFICATION

I, Ricky Shaver

certify the information shown herein is true and correct

Ricky Shaver

Signature of Ground Party Chief

Kenneth E. Davis

I certify that this Corner Record correctly represents work performed by me or under my direction in compliance with the "Corner Recordation Act"

KENNETH E. DAVIS  
Reg. No. 4975 S

Signature of Surveyor & Seal

Dated 2/28/2000 Reg. No. 4975 S

Employer Davis Surveying, Inc.

## Section

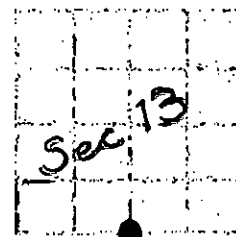
Office of Clerk and Recorder, County of Lincoln

This "corner record" was filed for record on 2/28/2000

was noted on the cross-index plat and is assigned page No. 10413

in book No. Coral M. Cumming, RLB

County Official



Cross Index No. S 1/4 Sec. 13 T. 27 N., R. 29 W., PMM

• THIS CORNER