

CERTIFIED CORNER RECORDATION

Corner S2
1/4 S11 T. 27 N., R. 29 W., P.M.M. Lincoln County

Record :

1911 GLO Township Subdivisions by Govt. Surveyor W.C. Perkins.

"Set a sandstone, 15x12x6 ins., 11ins. in the ground, for 1/4 sec. cor., marked 1/4 on N. face; from which:

A Pine, 12 ins. in diam., bears N 20° E, 7 lks. dist., marked 1/4 S2 BT.

A Fir, 12 ins. in diam., bears S 15° E, 31 lks. dist., marked 1/4 S11 BT."

Found Evidence :

A sandstone, 15x12x4 ins., 9 ins. in the ground firmly set, marked with 1/4 on the north face, from which:

A Ponderosa Pine, 17 ins. diam., bears N 20° E, 4.40 feet dist., with visible scribing.

A Douglas Fir, 18 ins. diam., bears S 15° E, 21.00 feet dist., with overgrown face.

Perpetuation :

At the found stone monument position, we replace it with a 2 1/4 in. diam. alum. pipe, 30 ins. long, 26 ins. in the ground, with a 3 1/4 in. diam. alum. cap marked as shown below.

Paint 6 inch wide bands and scribed faces red on both Bearing Trees.

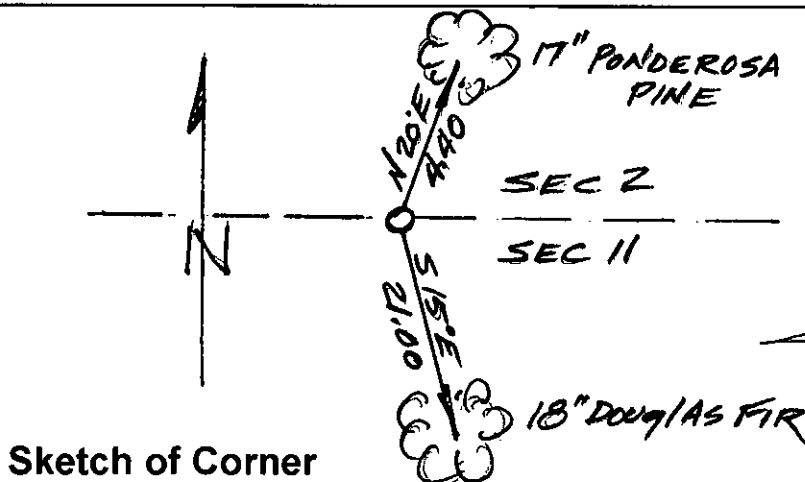
Attached Bearing Tree and Land Survey Monument signs to both trees.

Set a 6 ft. long steel post 2 ft. in the ground with attached Land Survey Monument and Property Line decals east 3.00 ft. dist. on line.

Place original stone monument alongside set alum. monument.



Magnetic Declination: 18° East



Sketch of Corner

CERTIFICATION

I, John Damon

certify the information shown herein is true and correct

Signature of Ground Party Chief

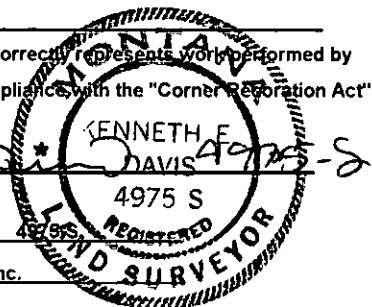
I, Ken E. Davis

certify that this Corner Record correctly represents work performed by me or under my direction in compliance with the "Corner Restoration Act" (70-22-101, et seq., M.C.A.)

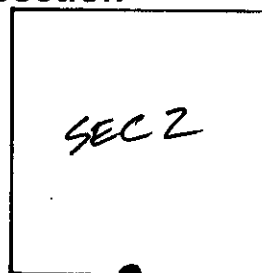
Signature of Surveyor & Seal

Date: 9/29/98 Reg. No. 4975 S

Employer: Davis Surveying, Inc.



Section



Office of Clerk and Recorder, County of Lincoln

This "corner record" was filed for record on 10-6-98

was noted on the cross-index plat and is assigned page No. 10216

in book No. Carl M. Cumming by DAB
 County Official

Cross Index No. S2
1/4 S11 T. 27 N., R. 29 W., PMM

• THIS CORNER