

CERTIFIED CORNER RECORDATION

Corner 1/4 S2|S1 T. 27 N., R. 29 W., P.M.M. Lincoln County

Record :

1911 GLO Township Subdivisions by Gov't Surveyor W.C. Perkins.

"Set a granite stone, 16x8x5 ins., 11ins. in the ground, for 1/4 sec. cor., marked 1/4 on W. face; from which:

A Pine, 5 ins. in diam., bears N 71° E, 36 lks. dist., marked 1/4 S1 BT.

A Tamarack, 10 ins. in diam., bears N 63° W, 33 lks. dist., marked 1/4 S2 BT."

Found Evidence :

A granite stone, 15x8x4 ins., 9 ins. in the ground firmly set, marked with 1/4 on the west face, from which:

A Western Tamarack, 12 ins. diam., bears N 67° W, 21.40 feet dist., with an overgrown face.

A Lodgepole Pine snag, 7 ins. diam., bears S 63° W, 21.78 feet dist., with visible scribing.

Perpetuation :

At the found stone monument position, we replace it with a 2 1/4 in. diam. alum. pipe, 30 ins. long, 26 ins. in the ground, with a 3 1/4 in. diam. alum. cap marked as shown below, from which:

A Douglas fir, 7 1/2 ins. diam., bears N 13° E, 16.75 feet dist., scribed (1/4 S1 BT).

Paint 6 inch wide bands and scribed faces red on both Bearing Trees.

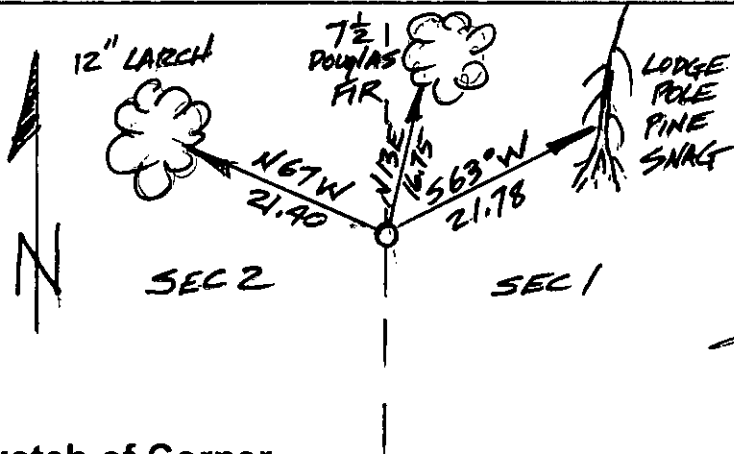
Attached Bearing Tree and Land Survey Monument signs to both trees.

Set a 6 ft. long steel post 2 ft. in the ground with attached Land Survey Monument and Property Line decals south 3.00 ft. dist. on line.

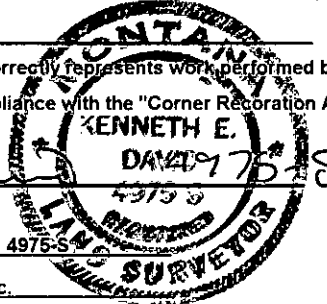
Place original stone monument alongside set alum. monument.



Magnetic Declination: 18° East

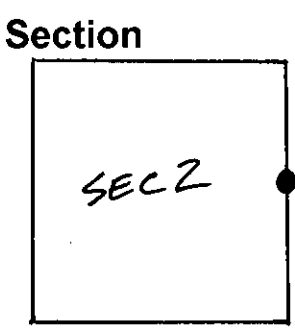


CERTIFICATION  
I, John Damon  
certify the information shown herein is true and correct  
John Damon  
Signature of Ground Party Chief  
I, Ken E. Davis  
certify that this Corner Record correctly represents work performed by me or under my direction in compliance with the "Corner Restoration Act" (70-22-101, et seq., M.C.A.)  
Ken E. Davis  
Signature of Surveyor & Seal  
Date: 9/29/98 Reg. No. 4975-S  
Employer: Davis Surveying, Inc.



Sketch of Corner

Office of Clerk and Recorder, County of Lincoln.  
This "corner record" was filed for record on 10-6-98  
was noted on the cross-index plat and is assigned page No. 10215  
in book No. Coral M. Cumming Byrds  
County Official



Cross Index No. 1/4 S2|S1 T. 27 N., R. 29 W., PMM • THIS CORNER