

# CERTIFIED CORNER RECORDATION

Corner 1/4 S2 <sup>S35</sup> T. 27 N., R. 29 W., P.M.M. Lincoln County

## Record :

1902 GLO Township boundary survey by Govt. Surveyors B.S. Adams and William Weeks.

"Set a fir post 3 ft. long, 5 ins. square, 24 ins. in the ground, for 1/4 sec. cor. marked 1/4 S35 on N., and 1/4 S2 on S. faces; from which:

A Fir, 4 ins. diam., bears N 5° E, 7 lks. dist., marked 1/4 S35 BT.

A Fir, 4 ins. diam., bears S 48°15' W, 5 lks. dist., marked 1/4 S2 BT."

## Found Evidence :

During a field search of the area, the original Bearing Trees were recovered and from them the remains of a 4x4 in. original wooden post were found in the ground, from which:

A Douglas Fir, 8 1/2 ins. diam., bears N 8° E, 4.61 feet dist., with an overgrown face.

A Douglas Fir stump, 5 ins. diam., bears S 48°15' W, 3.30 feet dist., with visible scribed remains.

## Perpetuation :

At the center of the found wooden post remains, we replace it with a 2 1/4 in. diam. alum. pipe, 30 ins. long, 26 ins. in the ground, with a 3 1/4 in. diam. alum. cap marked as shown below, from which:

A Grand Fir, 3 ins. diam., bears S 6° W, 7.80 feet dist., scribed (1/4 S2 BT).

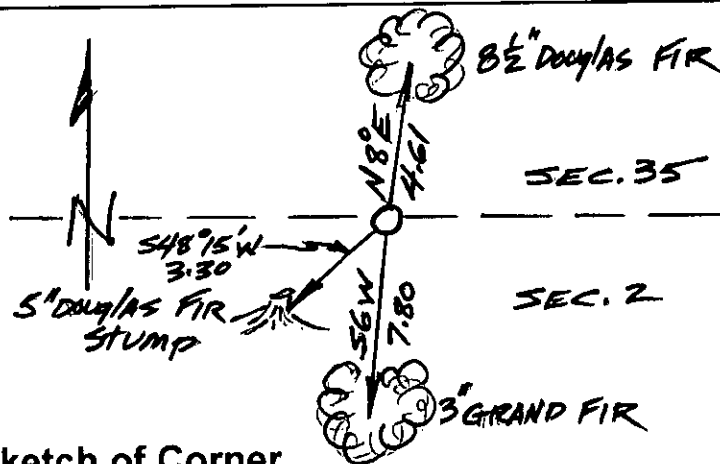
Paint 6 inch wide bands and scribed faces red on both Bearing Trees.

Attached Bearing Tree and Land Survey Monument signs to both trees.

Set a 6 ft. long steel post 2 ft. in the ground with attached Land Survey Monument and Property Line decals east 3.00 ft. dist. on line.



Magnetic Declination: 18° East



Sketch of Corner

### CERTIFICATION

I, John Damon

certify the information shown herein is true and correct

Signature of Ground Party Chief

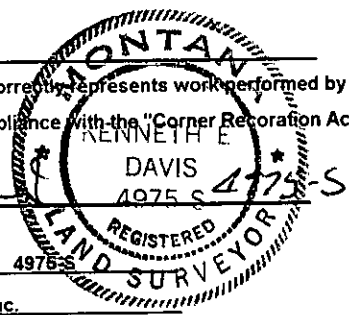
I, Ken E. Davis

certify that this Corner Record correctly represents work performed by me or under my direction in compliance with the "Corner Recordation Act" (70-22-101, et seq. M.C.A.)

Signature of Surveyor & Seal

Date: 9/29/98 Reg. No. 4975-S

Employer: Davis Surveying, Inc.



Office of Clerk and Recorder, County of Lincoln

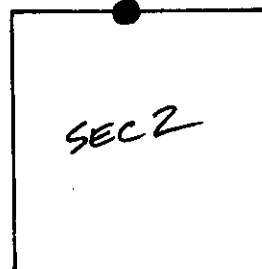
This "corner record" was filed for record on 10-6-98

was noted on the cross-index plat and is assigned page No. 10213

in book No. Coral M. Cunningham & Sub

County Official

### Section



Cross Index No. 1/4 S2 <sup>S35</sup> T. 27 N., R. 29 W., PMM

• THIS CORNER