

**CERTIFIED CORNER RECORDATION**

Corner Sec. Cor 11|12 T. 27 N., R. 29 W., P.M.M. Lincoln County

**Record :**

1911 GLO Township Subdivisions by Govt. Surveyor W.C. Perkins.

"Set a sandstone, 16x12x9 ins., 12 ins. in the ground, for the cor. of Secs. 1, 2, 11 and 12 marked with 1 notch on E. and 5 notches on S. edge, from which:

- A fir, 14 ins. in diam., bears N 2° E, 45 lks. dist., marked T27N R29W S1 BT.
- A fir, 10 ins. in diam., bears S 44° E, 58 lks. dist., marked T27N R29W S12 BT.
- A fir, 12 ins. in diam., bears S 33° W, 35 lks. dist., marked T27N R29W S11 BT.
- A fir, 12 ins. in diam., bears N 79° W, 40 lks. dist., marked T27N R29W S2 BT."

**Found Evidence :**

A sandstone, 15x13x8 ins., 10 ins. in the ground firmly set, marked 5 notches on N. and 1 notch on W. edges (record 1 notch on E. and 5 on S. edges), from which:

- A Douglas Fir, 19 ins. diam., bears N 2° E, 29.90 feet dist., with visible scribing.
- A Douglas Fir, 14 1/2 ins. diam., bears S 44° E, 38.5 feet dist., with visible scribing.
- A Douglas Fir, 17 ins. diam., bears S 33° W, 23.10 ft. dist., with overgrown face.
- A Douglas Fir, 17 ins. diam., bears N 79° W, 26.40 ft. dist., with visible scribing.

**Perpetuation :**

At the found stone monument position, we replace it with a 2 1/4 in. diam. alum. pipe, 30 ins. long, 26 ins. in the ground, with a 3 1/4 in. diam. alum. cap marked as shown below.

Paint 6 inch wide bands and scribed faces red on all Bearing Trees.

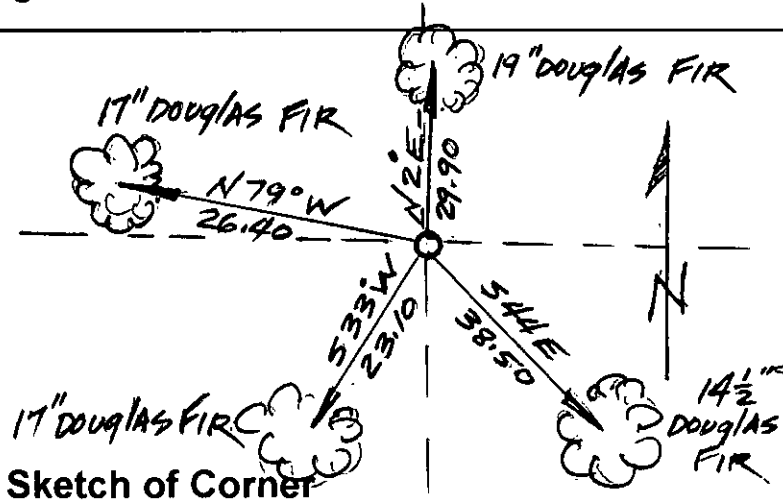
Attached Bearing Tree and Land Survey Monument signs to all Bearing Trees.

Set a 6 ft. long steel post 2 ft. in the ground with attached Land Survey Monument and Property Line decals 3.00 ft. W. on line.

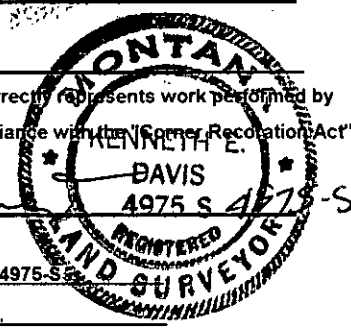
Place original stone monument alongside set alum. monument.



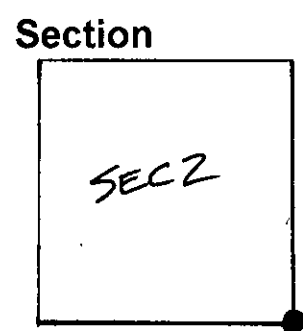
Magnetic Declination: 18° East



**CERTIFICATION**  
 I, John Damon  
 certify the information shown herein is true and correct  
 Signature of Ground Party Chief John Damon  
 I, Ken E. Davis  
 certify that this Corner Record correctly represents work performed by me or under my direction in compliance with the "Corner Recordation Act" (70-22-101, et seq. M.C.A.)  
 Signature of Surveyor & Seal Ken E. Davis  
 Date: 9/29/98 Reg. No. 4975-S  
 Employer: Davis Surveying, Inc.



Office of Clerk and Recorder, County of Lincoln  
 This "corner record" was filed for record on 10-6-98  
 was noted on the cross-index plat and is assigned page No. 10212  
 in book No. \_\_\_\_\_  
Coral M. Cummings County Official



Cross Index No. 211 Sec. Cor. 11|12 T. 27 N., R. 29 W., PMM • THIS CORNER